

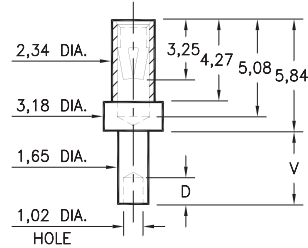
PIN RECEPTACLES

FOR 0,81 - 1,17 DIAMETER PINS

0344

0344-X-19-XX-34-XX-10-0

Swage mount in 1,70 hole

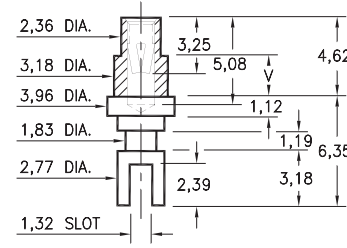


Basic Part Number	Board Thickness	Length V	Depth D
0344-1	0,78	1,57	1,02
0344-2	1,57	2,39	1,57
0344-3	2,39	3,18	1,57
0344-4	3,18	3,96	1,57

0349

0349-X-31-XX-34-XX-10-0

Swage mount in 3,28 hole

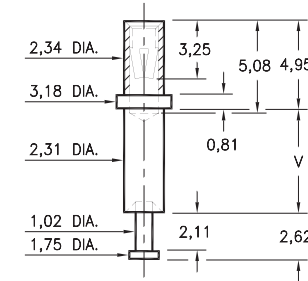


Basic Part Number	Board Thickness	Length V
0349-2	1,57	2,39
0349-3	2,39	3,18
0349-4	3,18	3,96

0323

0323-X-15-XX-34-XX-10-0

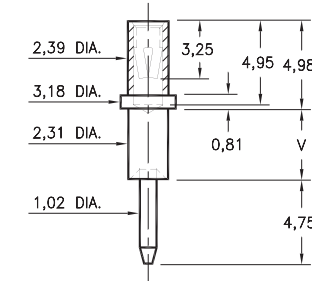
Swage mount in 2,39 hole



0324

0324-X-15-XX-34-XX-10-0

Swage mount in 2,39 hole

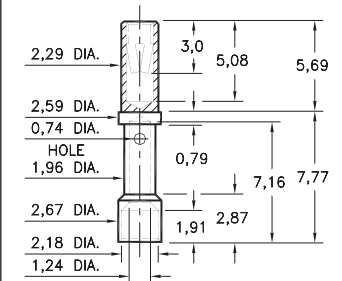


Basic Part Number	Board Thickness	Length V
032X-1	0,79	1,57
032X-2	1,57	2,39
032X-3	2,39	3,18
032X-4	3,18	3,96
032X-5	4,78	5,56

0348

0348-0-33-XX-34-XX-10-0

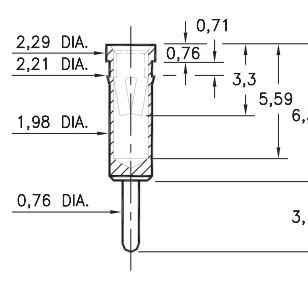
Wire crimp termination. Accepts wire sizes 20 AWG Max. / 24 AWG Min.



0405

0405-0-15-XX-34-XX-04-0

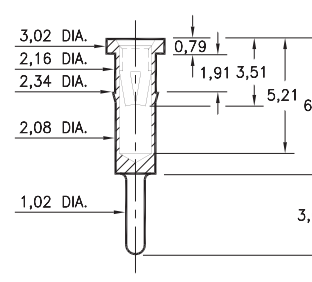
Press-fit in 2,13 mounting hole



0336

0336-0-15-XX-34-XX-04-0

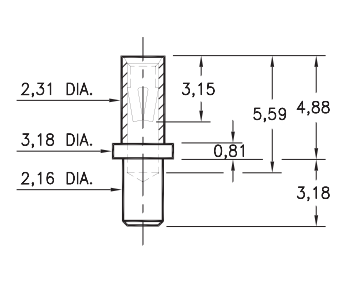
Press-fit in 2,26 mounting hole



0322

0322-0-15-XX-34-XX-10-0

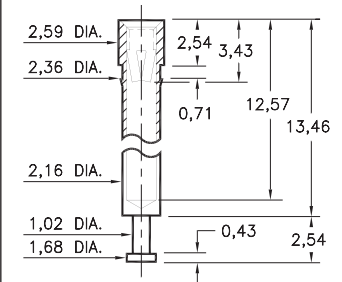
Solder mount in 2,26 min. mounting hole



0325

0325-0-15-XX-34-XX-10-0

Press-fit in 2,29 mounting hole



SPECIFICATIONS:

Shell Material: Brass Alloy 360, 1/2 Hard

Contact Material: Beryllium Copper Alloy 172, HT

Dimensions: Millimeters

Tolerances On: Lengths: ±0,13

Diameters: ±0,051

Angles: ±2°



ORDER CODE: XXXX - X - XX - XX - 34 - XX - XX - 0

BASIC PART #

SPECIFY SHELL FINISH:

- 01 5,08µm TIN/LEAD OVER NICKEL
- ◆ 80 5,08µm TIN OVER NICKEL (RoHS)
- ◆ 15 0,25µm GOLD OVER NICKEL (RoHS)

SPECIFY CONTACT FINISH:

- 01 5,08µm TIN/LEAD OVER NICKEL
- ◆ 80 5,08µm TIN OVER NICKEL (RoHS)
- ◆ 27 0,76µm GOLD OVER NICKEL (RoHS)

SELECT CONTACT:

#34 CONTACT (DATA ON PAGE 258)

(For alternate contact choices, see group E on page 248)



X-ON Electronics

Largest Supplier of Electrical and Electronic Components

Click to view similar products for [Circuit Board Hardware - PCB category](#):

Click to view products by [Mill-Max manufacturer](#):

Other Similar products are found below :

[8919-0-00-15-00-00-03-0](#) [0135-0-15-01-30-27-04-0](#) [5970-1-15-01-32-14-04-0](#) [0149-0-15-15-30-27-04-0](#) [MBI 1 BLUE](#) [7305-0-15-15-47-14-10-0](#) [MLN 150/1 BLACK](#) [8579-0-15-80-11-27-10-0](#) [8579-1-15-15-11-27-10-0](#) [8830-0-15-01-22-14-10-0](#) [8836-0-00-21-00-00-03-0](#) [PRUEF 2 RED](#) [9976-0-00-00-00-00-03-0](#) [PW1616](#) [1215-3-05-00-00-00-01-0](#) [1231](#) [1303-0-15-15-47-14-04-0](#) [1404-3](#) [1404-4](#) [1406-4](#) [1407-3](#) [1406-3](#) [1407-4](#) [1408-3](#) [1424-4](#) [1427-3](#) [1419-4](#) [1426-4](#) [MPS 1 BLACK](#) [1548-103](#) [1938-0-00-00-00-00-03-0](#) [1942-0-00-00-00-00-03-0](#) [2101-3-00-44-00-00-07-0](#) [2108-2-00-50-00-00-07-0](#) [2109-2-00-44-00-00-07-0](#) [2110-2-00-44-00-00-07-0](#) [2111-2-00-00-00-00-07-0](#) [2113-4-00-44-00-00-07-0](#) [2301-3-00-44-00-00-07-0](#) [2308-1-00-50-00-00-07-0](#) [2313-2-00-00-00-00-07-0](#) [2315-2-01-44-00-00-07-0](#) [2317-2-00-50-00-00-07-0](#) [2333-1-00-50-00-00-07-0](#) [9000-0-00-00-00-00-03-0](#) [2506-2-00-50-00-00-07-0](#) [2507-2-01-44-00-00-07-0](#) [2508-2-00-44-00-00-07-0](#) [2561-2-00-44-00-00-07-0](#) [9220](#)