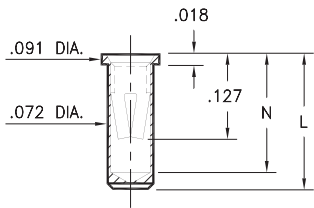


# PIN RECEPTACLES

FOR .032" - .046" DIAMETER PINS

## 0327/0351/0373

**03XX-0-15-XX-34-XX-10-0**  
Solder mount in .075 min. mounting hole  
Also available on 12mm or 24mm wide carrier tape: See chart for details  
See page 194.11 for Tape & Reel details



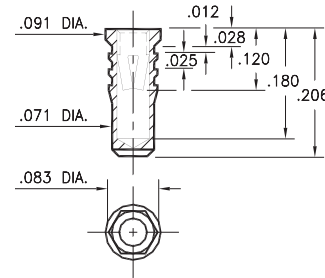
Basic Part Number	Length L	Depth N
0327-0	.206	.180
0351-0	.226	.200
0373-0	.270	.241

### T&R Packaging

Basic Part Number	Tape Width	Parts per 13" Reel
0327-0	12mm	1,400
0351-0	24mm	1,100
0373-0	24mm	1,000

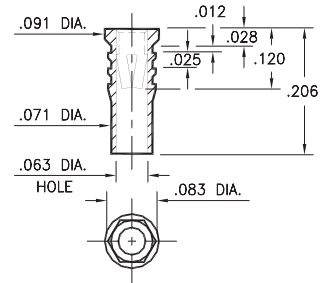
## 0328

**0328-0-15-XX-34-XX-10-0**  
Hex press-fit in .079 plated through-hole



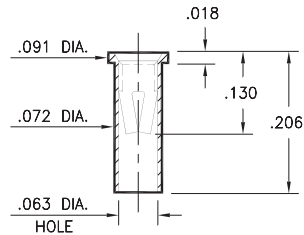
## 0334

**0334-0-15-XX-34-XX-10-0**  
Hex press-fit in .079 plated through-hole



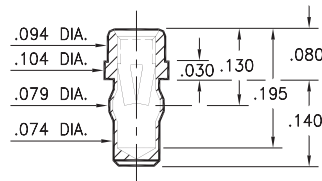
## 0312

**0312-0-15-XX-34-XX-10-0**  
Solder mount in .075 min. mounting hole  
Also available on 12mm wide carrier tape: 1,400 parts per 13" reel  
See page 194.11 for Tape & Reel details



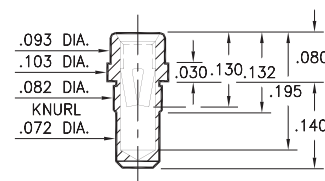
## 0333

**0333-0-42-XX-34-XX-10-0**  
Press-fit in .076 mounting hole



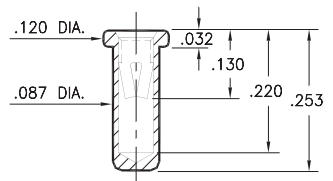
## 0357

**0357-0-15-XX-34-XX-10-0**  
Press-fit in .078 mounting hole



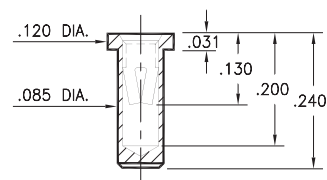
## 0317

**0317-0-15-XX-34-XX-04-0**  
Solder mount in .091 min. mounting hole



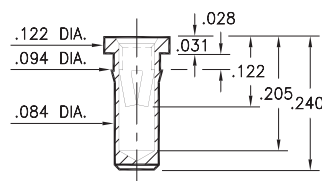
## 0340

**0340-0-15-XX-34-XX-10-0**  
Solder mount in .087 min. mounting hole  
Also available on 24mm wide carrier tape: 1,250 parts per 13" reel  
See page 194.11 for Tape & Reel details



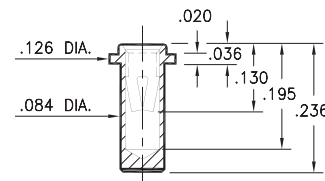
## 0345

**0345-0-15-XX-34-XX-10-0**  
Press-fit in .089 mounting hole



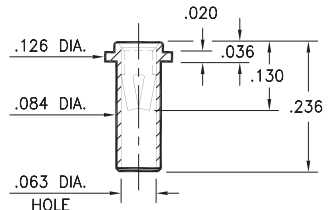
## 0316

**0316-0-15-XX-34-XX-10-0**  
Solder mount in .087 min. mounting hole



## 0314

**0314-0-15-XX-34-XX-10-0**  
Solder mount in .087 min. mounting hole



### SPECIFICATIONS:

**Shell Material:** Brass Alloy 360, 1/2 Hard

**Contact Material:** Beryllium Copper Alloy 172, HT

**Dimensions:** Inches

**Tolerances On:** Lengths: ±.005

Diameters: ±.002

Angles: ± 2°



**ORDER CODE:** XXXX - X - XX - XX - 34 - XX - 10 - 0

**BASIC PART #**

**SPECIFY SHELL FINISH:**

01 200 μ" TIN/LEAD OVER NICKEL

◆ 80 200 μ" TIN OVER NICKEL (RoHS)

◆ 15 10 μ" GOLD OVER NICKEL (RoHS)

**SPECIFY CONTACT FINISH:**

01 200 μ" TIN/LEAD OVER NICKEL

◆ 80 200 μ" TIN OVER NICKEL (RoHS)

◆ 27 30 μ" GOLD OVER NICKEL (RoHS)

**SELECT CONTACT:**

**#34 CONTACT (DATA ON PAGE 258)**

(For alternate contact choices, see group E on page 248)



## X-ON Electronics

Largest Supplier of Electrical and Electronic Components

*Click to view similar products for [IC & Component Sockets](#) category:*

*Click to view products by [Mill-Max](#) manufacturer:*

Other Similar products are found below :

[714-43-102-31-012000](#) [0066-3-17-15-30-14-02-0](#) [0134-0-15-15-32-27-04-0](#) [614-DG5](#) [6527-0-00-15-00-00-03-0](#) [670](#) [672](#) [673](#) [712-93-120-41-001000](#) [714-93-104-31-018000](#) [8059-4G1-LF](#) [807-22-001-10-001101](#) [807-22-001-10-003101](#) [807-22-001-10-004101](#) [807-22-001-10-006101](#) [807-22-001-30-011101](#) [807-22-001-30-012101](#) [807-22-001-30-013101](#) [807-22-001-30-014101](#) [8-1437531-4](#) [8150-6P10](#) [833-93-034-10-001000](#) [835-43-014-10-001000](#) [851-41-006-10-001000](#) [851-43-008-20-001000](#) [851-43-014-20-001000](#) [851-93-006-20-001000](#) [851-93-010-20-001000](#) [852-10-026-10-001000](#) [853-43-020-10-001000](#) [86.010.0053.0](#) [116-43-306-41-003000](#) [116-43-308-41-007000](#) [116-87-308-41-007101](#) [PX-68LCC](#) [PX-84LCC](#) [121-13-318-41-001000](#) [121-13-320-41-001000](#) [121-13-308-41-001000](#) [123-43-314-41-801000](#) [123-43-420-41-001000](#) [123-43-636-41-001000](#) [123-87-320-41-001101](#) [122-13-316-41-001000](#) [123-13-624-41-001000](#) [123-43-306-41-001000](#) [123-43-322-41-801000](#) [123-43-428-41-001000](#) [123-43-624-41-001000](#) [12-3513-11](#)