

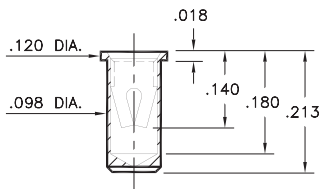
# PIN RECEPTACLES

**FOR .048" - .064" DIAMETER PINS (#13 CONTACT)  
FOR .045" - .065" DIAMETER PINS (#23 CONTACT)**

## 0364

**0364-0-15-XX-13-XX-10-0**

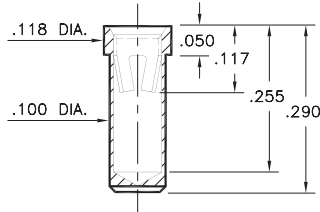
Solder mount in .100 min. mounting hole  
Also available on 16mm wide carrier tape:  
1,300 parts per 13" reel  
See page 194.13 for Tape & Reel details



## 0363

**0363-0-15-XX-23-XX-10-0**

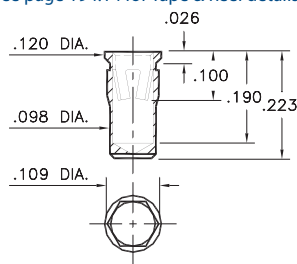
Solder mount in .102 min. mounting hole



## 0365

**0365-0-15-XX-23-XX-10-0**

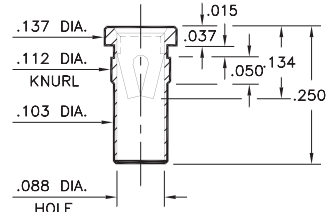
Hex press-fit in .105 plated through-hole  
Also available on 16mm wide carrier tape:  
1,200 parts per 13" reel  
See page 194.14 for Tape & Reel details



## 0366

**0366-0-15-XX-13-XX-10-0**

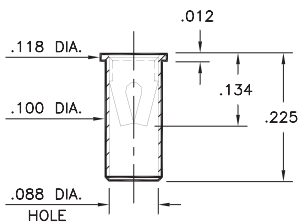
Press-fit in .109 mounting hole



## 0372

**0372-0-15-XX-13-XX-10-0**

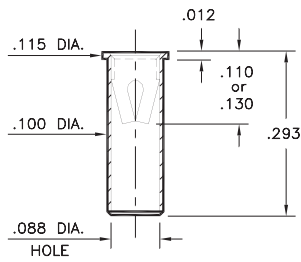
Solder mount in .102 min. mounting hole  
Also available on 24mm wide carrier tape:  
950 parts per 13" reel  
See page 194.14 for Tape & Reel details



## 0362

**0362-0-15-XX-X3-XX-10-0**

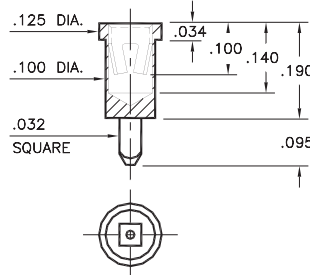
Solder mount in .102 min. mounting hole



## 0367

**0367-0-15-XX-23-XX-10-0**

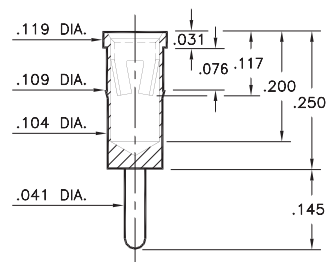
Square press-fit in .040 plated through-hole



## 9324

**9324-0-15-XX-23-XX-04-0**

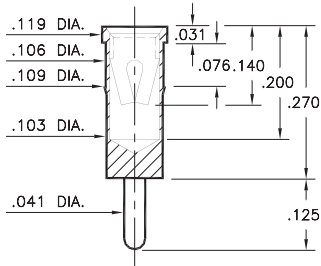
Press-fit in .106 mounting hole



## 0492

**0492-0-15-XX-13-XX-04-0**

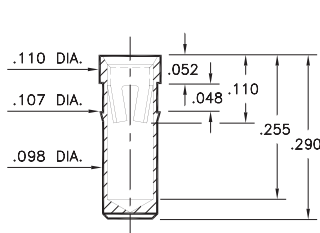
Press-fit in .106 mounting hole



## 0381

**0381-0-15-XX-23-XX-10-0**

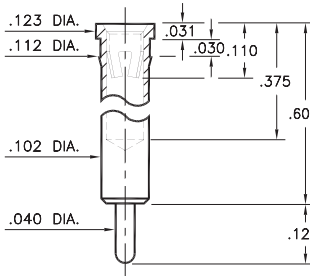
Press-fit in .104 mounting hole



## 4034

**4034-0-15-XX-23-XX-04-0**

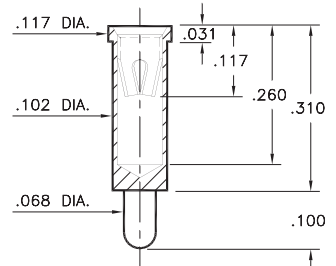
Press-fit in .109 mounting hole



## 3044

**3044-0-15-XX-23-XX-04-0**

Solder mount in .104 min. mounting hole



### SPECIFICATIONS:

**Shell Material:** Brass Alloy 360, 1/2 Hard

**Contact Material:** Beryllium Copper Alloy 172, HT

**Dimensions:** Inches

**Tolerances On:** Lengths: ±.005

Diameters: ±.002

Angles: ± 2°



**ORDER CODE: XXXX - X - XX - XX - XX - XX - 0**

**BASIC PART #**

**SPECIFY SHELL FINISH:**

- 01 200 μ" TIN/LEAD OVER NICKEL
- ◆ 80 200 μ" TIN OVER NICKEL (RoHS)
- ◆ 15 10 μ" GOLD OVER NICKEL (RoHS)

**SPECIFY CONTACT FINISH:**

- 01 200 μ" TIN/LEAD OVER NICKEL
- ◆ 80 200 μ" TIN OVER NICKEL (RoHS)
- ◆ 27 30 μ" GOLD OVER NICKEL (RoHS)

**SELECT CONTACT:**

**#13 or #23 CONTACT (DATA ON PAGE 260)**

(For alternate contact choices, see group G on page 248)



## X-ON Electronics

Largest Supplier of Electrical and Electronic Components

*Click to view similar products for [IC & Component Sockets](#) category:*

*Click to view products by [Mill-Max](#) manufacturer:*

Other Similar products are found below :

[714-43-102-31-012000](#) [0066-3-17-15-30-14-02-0](#) [0134-0-15-15-32-27-04-0](#) [614-DG5](#) [6527-0-00-15-00-00-03-0](#) [670](#) [672](#) [673](#) [712-93-120-41-001000](#) [714-93-104-31-018000](#) [8059-4G1-LF](#) [807-22-001-10-001101](#) [807-22-001-10-003101](#) [807-22-001-10-004101](#) [807-22-001-10-006101](#) [807-22-001-30-011101](#) [807-22-001-30-012101](#) [807-22-001-30-013101](#) [807-22-001-30-014101](#) [8-1437531-4](#) [8150-6P10](#) [833-93-034-10-001000](#) [835-43-014-10-001000](#) [851-41-006-10-001000](#) [851-43-008-20-001000](#) [851-43-014-20-001000](#) [851-93-006-20-001000](#) [851-93-010-20-001000](#) [852-10-026-10-001000](#) [853-43-020-10-001000](#) [86.010.0053.0](#) [116-43-306-41-003000](#) [116-43-308-41-007000](#) [116-87-308-41-007101](#) [PX-68LCC](#) [PX-84LCC](#) [121-13-318-41-001000](#) [121-13-320-41-001000](#) [121-13-308-41-001000](#) [123-43-314-41-801000](#) [123-43-420-41-001000](#) [123-43-636-41-001000](#) [123-87-320-41-001101](#) [122-13-316-41-001000](#) [123-13-624-41-001000](#) [123-43-306-41-001000](#) [123-43-322-41-801000](#) [123-43-428-41-001000](#) [123-43-624-41-001000](#) [12-3513-11](#)