

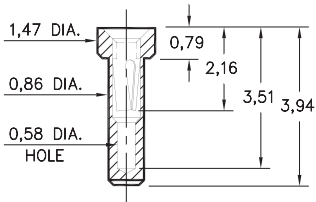
# PIN RECEPTACLES

**FOR 0,38 - 0,51 DIAMETER PINS (#1 CONTACT)  
AND 0,38 - 0,56 DIAMETER PINS (#2 CONTACT)  
(SEE SPECIFIC CONTACT RANGE ON PAGE 251)**

## 0548

0548-0-15-XX-21-XX-10-0

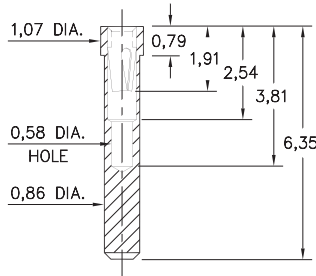
Solder mount in 0,91 min. mounting hole



## 8975

8975-0-15-XX-21-XX-10-0

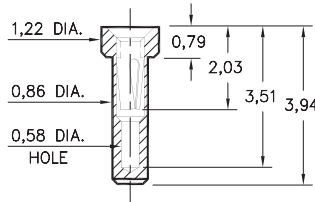
Solder mount in 0,91 min. mounting hole



## 3016

3016-0-15-XX-21-XX-10-0

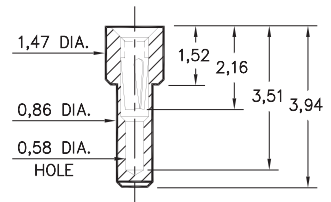
Solder mount in 0,91 min. mounting hole



## 9548

9548-0-15-XX-21-XX-10-0

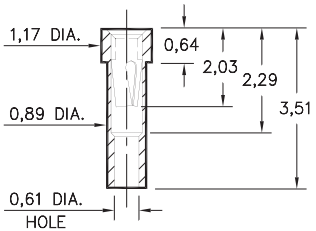
Solder mount in 0,91 min. mounting hole



## 8637

8637-0-15-XX-21-XX-10-0

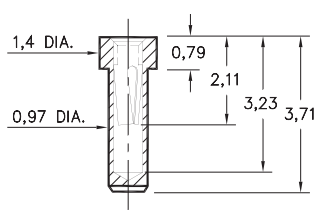
Solder mount in 0,94 min. mounting hole



## 1407

1407-0-15-XX-11-XX-10-0

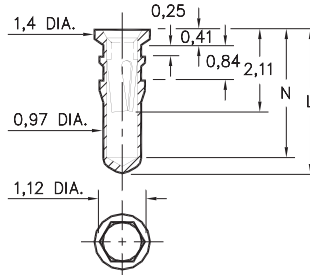
Solder mount in 1,02 min. mounting hole



## 0553/8553

X553-X-15-XX-X1-XX-10-0

Hex press-fit in 1,04 plated through-hole

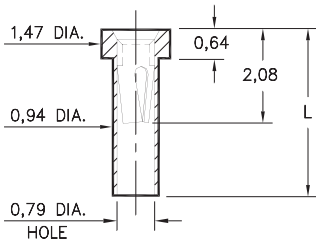


Basic Part Number	Length L	Depth N
0553-1	3,56	3,15
0553-2	4,32	3,91
0553-3	7,16	6,76
8553-0	6,22	5,82

## 0566

0566-X-15-XX-21-XX-10-0

Solder mount in 1,0 min. mounting hole

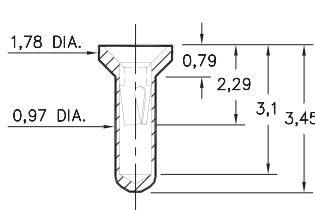


Basic Part Number	Length L
0566-1	2,11
0566-2	3,51

## 0442

0442-0-15-XX-11-XX-10-0

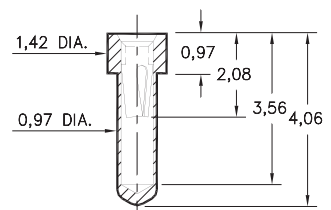
Solder mount in 1,02 min. mounting hole



## 0554

0554-0-15-XX-21-XX-10-0

Solder mount in 1,02 min. mounting hole



### SPECIFICATIONS:

**Shell Material:** Brass Alloy 360, 1/2 Hard

**Contact Material:** Beryllium Copper Alloy 172, HT

**Dimensions:** Millimeters

**Tolerances On:** Lengths: ± 0,13

Diameters: ± 0,051

Angles: ± 2°



**ORDER CODE:** XXXX - X - 15 - XX - XX - XX - 10 - 0

**BASIC PART #**

**SPECIFY SHELL FINISH:**

01 5,08µm TIN/LEAD OVER NICKEL

◆ 80 5,08µm TIN OVER NICKEL (RoHS)

◆ 15 0,25µm GOLD OVER NICKEL (RoHS)

**SPECIFY CONTACT FINISH:**

02 2,54µm TIN/LEAD OVER NICKEL

◆ 84 2,54µm TIN OVER NICKEL (RoHS)

◆ 27 0,76µm GOLD OVER NICKEL (RoHS)

**SELECT CONTACT:**

#11 or #21 CONTACT (DATA ON PAGE 251)

(For alternate contact choices, see group A on page 248)



## X-ON Electronics

Largest Supplier of Electrical and Electronic Components

*Click to view similar products for [IC & Component Sockets](#) category:*

*Click to view products by [Mill-Max](#) manufacturer:*

Other Similar products are found below :

[0066-3-17-15-30-14-02-0](#) [670](#) [672](#) [673](#) [694-13-640-00-672-000](#) [712-93-120-41-001000](#) [714-93-104-31-018000](#) [8059-4G1-LF](#) [807-22-001-10-001101](#) [807-22-001-10-006101](#) [807-22-001-30-011101](#) [807-22-001-30-012101](#) [807-22-001-30-013101](#) [807-22-001-30-014101](#) [8-1437531-4](#) [8150-6P10](#) [833-93-034-10-001000](#) [851-41-006-10-001000](#) [851-43-008-20-001000](#) [851-43-014-20-001000](#) [851-93-006-20-001000](#) [851-93-010-20-001000](#) [853-43-020-10-001000](#) [86.010.0053.0](#) [116-43-308-41-007000](#) [PX-68LCC](#) [121-13-318-41-001000](#) [121-13-320-41-001000](#) [121-13-308-41-001000](#) [123-43-314-41-801000](#) [123-43-420-41-001000](#) [123-87-320-41-001101](#) [122-13-316-41-001000](#) [123-13-624-41-001000](#) [123-43-306-41-001000](#) [12-3513-11](#) [123-91-320-41-001000](#) [126-43-310-41-002000](#) [AKSUN 37V-T](#) [1437503-9](#) [1437504-1](#) [146-44-308-41-013000](#) [APO-320-G-T](#) [146-43-308-41-012000](#) [160-10-308-00-001000](#) [160-40-320-00-001000](#) [214-99-306-01-670800](#) [232-1270-02-0602](#) [2-382761-4](#) [2-5331677-4](#)