

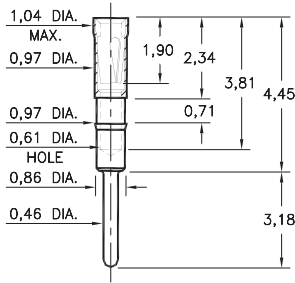
PIN RECEPTACLES

**FOR 0,38 - 0,46 DIAMETER PINS (#09 CONTACT)
FOR 0,38 - 0,51 DIAMETER PINS (#11 CONTACT)
AND 0,38 - 0,56 DIAMETER PINS (#21 CONTACT)**

0467

0467-0-15-XX-21-XX-04-0

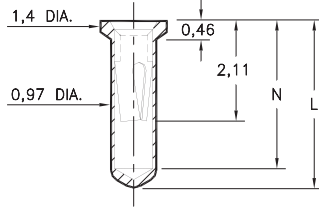
Press-fit in 0,94 mounting hole



0552

0552-X-15-XX-X1-XX-10-0

Solder mount in 1,02 min. mounting hole
Also available on 16mm wide carrier tape:
1,500 parts per 330mm reel
Order as: 0552-X-57-XX-X1-XX-10-0

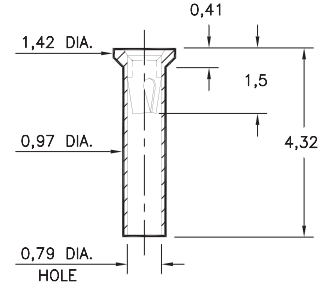


| Basic Part Number | Length L | Depth N |
|-------------------|----------|---------|
| 0552-1 | 3,45 | 3,05 |
| 0552-2 | 4,32 | 3,81 |

5522

5522-0-15-XX-09-XX-10-0

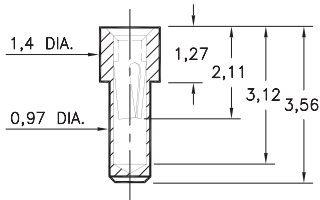
Solder mount in 1,02 min. mounting hole



0569

0569-0-15-XX-X1-XX-10-0

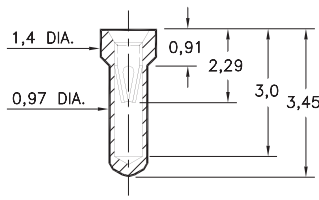
Solder mount in 1,02 min. mounting hole



6023

6023-0-15-XX-21-XX-10-0

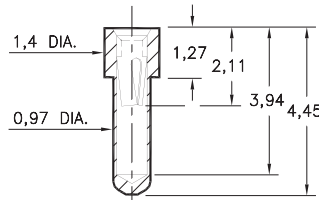
Solder mount in 1,02 min. mounting hole



6214

6214-0-15-XX-21-XX-10-0

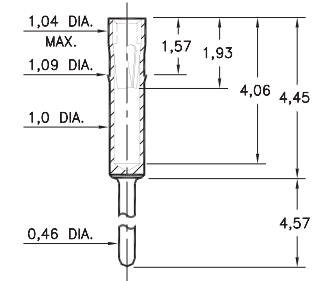
Solder mount in 1,02 min. mounting hole



2086

2086-0-15-XX-21-XX-04-0

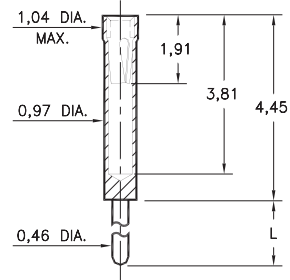
Press-fit in 1,02 mounting hole



0461

0461-X-15-XX-X1-XX-04-0

Solder mount in 0,51 min. mounting hole

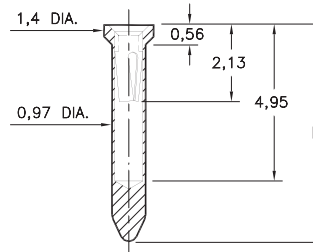


| Basic Part Number | Length L |
|-------------------|----------|
| 0461-0 | 10,16 |
| 0461-1 | 6,99 |
| 0461-2 | 4,57 |
| 0461-3 | 3,18 |
| 0461-4 | 1,52 |
| 0461-5 | 11,18 |

8579

8579-X-15-XX-X1-XX-10-0

Solder mount in 1,02 min. mounting hole
Also available on 24mm wide carrier tape:
1,200 parts per 330mm reel
Order as: 8579-0-57-XX-X1-XX-10-0



| Basic Part Number | Length L |
|-------------------|----------|
| 8579-0 | 5,94 |
| 8579-1 | 7,49 |

SPECIFICATIONS:

Shell Material: Brass Alloy 360, 1/2 Hard

Contact Material: Beryllium Copper Alloy 172, HT

Dimensions: Millimeters

Tolerances On: Lengths: ± 0,13

Diameters: ± 0,051

Angles: ± 2°



ORDER CODE: XXXX - X - 15 - XX - XX - XX - XX - 0

BASIC PART #

SPECIFY SHELL FINISH:

- ◆ **01** 5,08µm TIN/LEAD OVER NICKEL
- ◆ **80** 5,08µm TIN OVER NICKEL (RoHS)
- ◆ **15** 0,25µm GOLD OVER NICKEL (RoHS)

SPECIFY CONTACT FINISH:

- ◆ **02** 2,54µm TIN/LEAD OVER NICKEL
- ◆ **84** 2,54µm TIN OVER NICKEL (RoHS)
- ◆ **27** 0,76µm GOLD OVER NICKEL (RoHS)

SELECT CONTACT:

#09, #11 or #21 CONTACT (DATA ON PAGES 250 & 251)
(For alternate contact choices, see group A on page 248)



X-ON Electronics

Largest Supplier of Electrical and Electronic Components

Click to view similar products for [Contact Probes](#) category:

Click to view products by [Mill-Max](#) manufacturer:

Other Similar products are found below :

[CT5253](#) [CT5082](#) [100039-033-958](#) [100077-003-0-0](#) [300122-031-1102](#) [R-2-RP-375](#) [S-4-C-5-G S/C](#) [300122-056-0203](#) [SS-75-B-2.4-G](#) [ICT-100-J-17-G](#) [SS-75-C-4.9-D D/C .620 OAL](#) [100165-033-952](#) [100024-002-942](#) [SS-75-E-4.9-D D/C .620 OAL](#) [SX-0-U-2.2-G D/C](#) [101740-028-948](#) [ICT-100-V8-8-G S/C](#) [ICT-075-B-10-G-S S/C](#) [S-2-D-8.3-G D/C](#) [S-2-D-10-G D/C](#) [GSS-19-7-G S/C OAL](#) [ICT-100-T-8-G S/C](#) [GSS-4-7-G S-0-B9-2.5-G S/C](#) [SS-40-J-2.4-G D/C](#) [S-0-A-2.2-D 660 S/C](#) [SS-50-J-3.3-D S/C](#) [S-0-V-3.7-G S/C](#) [SX-2-B-7-G D/C](#) [SX-1-U-6.6-G D/C](#) [SX-1-C-6.6-G D/C](#) [SS-75-D-4.9-D D/C .620 OAL](#) [SS-50-E-2.9-G S/C](#) [SS-40-J-1.8-G-N/L D/C](#) [SS-3-7-G S/C W/HOLE .373 OAL](#) [SS-18-7-G S/C W/HOLE .405 OAL](#) [SS-10-7-G S/C W/HOLE .373 OAL](#) [SS-1-7-G S/C W/HOLE .385 OAL](#) [SHE-5-H-18.7-G](#) [SHE-5-B-18.7-G](#) [SHE-5-A-18.7-G](#) [SHE-3-A-7-G](#) [SH-4-A-10-G S/C](#) [101057-001-952](#) [S-50C-HS-4.3-DG-S](#) [S-5-F-8-G S/C SS SPGS](#) [S-5-F-16.4-G S/C](#) [S-4-E-5-D S/C](#) [S-2-J-8.3-G D/C](#) [S-2-E-10-G D/C](#)