

MAXIMUM SOLUTIONS

New Receptacle from Mill-Max Offers Early Engagement



Mill-Max is pleased to announce a new option in our receptacle line-up with the introduction of receptacles characterized by an early engagement contact point.

The new [0507-0-15-XX-31-27-10-0](#) receptacle provides an early engagement contact point, minimal overall length and accepts lead diameters from .018" - .023" (0,46mm). The minimum mating lead length for reliable electrical contact is .054" (1,37mm). The internal contact allows for short receptacle designs due to its .062" (1,57mm) length and the fact its design does not require excess protrusion through the fingers of the contact for electrical connection. The ability to use shorter mating pins provides several advantages such as compressed packaging, shorter electrical signal paths and lower potential RF signal interference.

The 0507 is a solder mount receptacle with a .020" (0,51 mm), low profile height above the board. The contact enables us to keep the total length to .090" (2,29mm) making it advantageous for satisfying tight packaging constraints.

The receptacle shell is made from brass alloy and, like all Mill-Max pins, are high-speed machined to precision tolerances. The contact is press-fit into each receptacle shell forming a gas-tight connection. It is a four finger contact, precision stamped from beryllium copper strip and heat treated to provide excellent spring and electrical properties. The receptacle current rating is 3 Amps (@10°C temp. rise in free air). The receptacle shell and contact are gold-plated providing the highest interconnect reliability, corrosion protection and wear resistance. Tin and tin/lead plating options are also available upon request.

For more information, please visit: www.mill-max.com/PR646.

(6/14 -- PR646)

Mill-Max Mfg. Corp. • 190 Pine Hollow Road, Oyster Bay, NY 11771
516-922-6000 • Fax: 516-922-9253 • www.mill-max.com



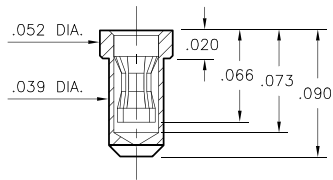
PIN RECEPTACLES

FOR .018" - .023" DIAMETER PINS

0507

0507-0-15-XX-31-XX-10-0

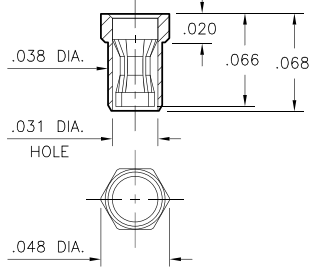
Solder mount in .042 min. mounting hole



0531

0531-0-15-XX-31-XX-10-0

Hex press-fit in .045 plated through-hole (Top or Bottom entry capable)



SPECIFICATIONS:

Shell Material: Brass Alloy 360, 1/2 Hard

Contact Material: Beryllium Copper Alloy 172, HT

Dimensions: Inches

Tolerances On: Lengths: $\pm .005$

Diameters: $\pm .002$

Angles: $\pm 2^\circ$



ORDER CODE: 05XX - 0 - 15 - XX - 31 - XX - 10 - 0

BASIC PART #

SPECIFY SHELL FINISH:

- 01 200 μ " TIN/LEAD OVER NICKEL
- ◆ 80 200 μ " TIN OVER NICKEL (RoHS)
- ◆ 15 10 μ " GOLD OVER NICKEL (RoHS)

SPECIFY CONTACT FINISH:

- 01 200 μ " TIN/LEAD OVER NICKEL
- ◆ 80 200 μ " TIN OVER NICKEL (RoHS)
- ◆ 27 30 μ " GOLD OVER NICKEL (RoHS)

SELECT CONTACT:

#31 CONTACT

(For alternate contact choices, see group A on page 248)

X-ON Electronics

Largest Supplier of Electrical and Electronic Components

Click to view similar products for [Circuit Board Hardware - PCB category](#):

Click to view products by [Mill-Max manufacturer](#):

Other Similar products are found below :

[8919-0-00-15-00-00-03-0](#) [0135-0-15-01-30-27-04-0](#) [5970-1-15-01-32-14-04-0](#) [0149-0-15-15-30-27-04-0](#) [MBI 1 BLUE](#) [7305-0-15-15-47-14-10-0](#) [MLN 150/1 BLACK](#) [8579-0-15-80-11-27-10-0](#) [8579-1-15-15-11-27-10-0](#) [8830-0-15-01-22-14-10-0](#) [8836-0-00-21-00-00-03-0](#) [PRUEF 2 RED](#) [9976-0-00-00-00-00-03-0](#) [PW1616](#) [1215-3-05-00-00-00-01-0](#) [1231](#) [1303-0-15-15-47-14-04-0](#) [1404-3](#) [1404-4](#) [1406-4](#) [1407-3](#) [1406-3](#) [1407-4](#) [1408-3](#) [1424-4](#) [1427-3](#) [1419-4](#) [1426-4](#) [1548-103](#) [1938-0-00-00-00-00-03-0](#) [1942-0-00-00-00-00-03-0](#) [2101-3-00-44-00-00-07-0](#) [2108-2-00-50-00-00-07-0](#) [2109-2-00-44-00-00-07-0](#) [2110-2-00-44-00-00-07-0](#) [2111-2-00-00-00-00-07-0](#) [2113-4-00-44-00-00-07-0](#) [2301-3-00-44-00-00-07-0](#) [2308-1-00-50-00-00-07-0](#) [2313-2-00-00-00-00-07-0](#) [2315-2-01-44-00-00-07-0](#) [2317-2-00-50-00-00-07-0](#) [2333-1-00-50-00-00-07-0](#) [9000-0-00-00-00-00-03-0](#) [2506-2-00-50-00-00-07-0](#) [2507-2-01-44-00-00-07-0](#) [2508-2-00-44-00-00-07-0](#) [2561-2-00-44-00-00-07-0](#) [9220](#) [9234-0-15-15-30-14-10-0](#)