

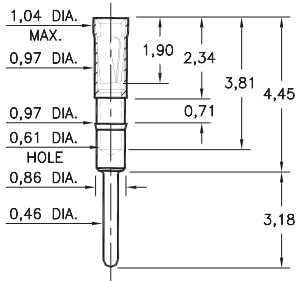
PIN RECEPTACLES

**FOR 0,38 - 0,46 DIAMETER PINS (#09 CONTACT)
FOR 0,38 - 0,51 DIAMETER PINS (#11 CONTACT)
AND 0,38 - 0,56 DIAMETER PINS (#21 CONTACT)**

0467

0467-0-15-XX-21-XX-04-0

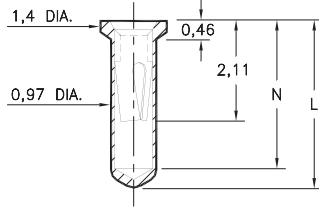
Press-fit in 0,94 mounting hole



0552

0552-X-15-XX-X1-XX-10-0

Solder mount in 1,02 min. mounting hole
Also available on 16mm wide carrier tape:
1,500 parts per 330mm reel
Order as: 0552-X-57-XX-X1-XX-10-0

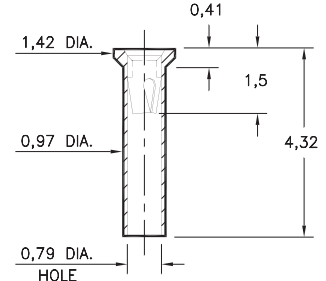


Basic Part Number	Length L	Depth N
0552-1	3,45	3,05
0552-2	4,32	3,81

5522

5522-0-15-XX-09-XX-10-0

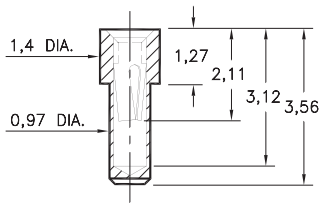
Solder mount in 1,02 min. mounting hole



0569

0569-0-15-XX-X1-XX-10-0

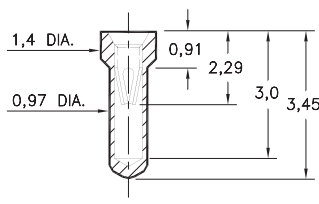
Solder mount in 1,02 min. mounting hole



6023

6023-0-15-XX-21-XX-10-0

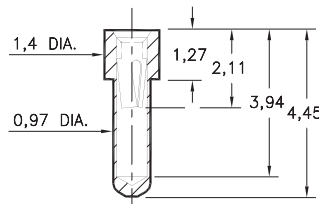
Solder mount in 1,02 min. mounting hole



6214

6214-0-15-XX-21-XX-10-0

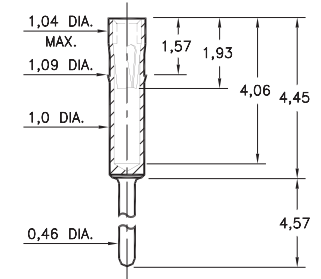
Solder mount in 1,02 min. mounting hole



2086

2086-0-15-XX-21-XX-04-0

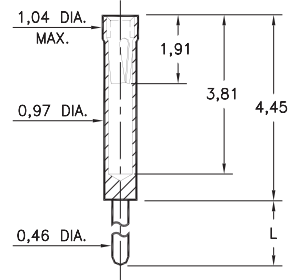
Press-fit in 1,02 mounting hole



0461

0461-X-15-XX-X1-XX-04-0

Solder mount in 0,51 min. mounting hole

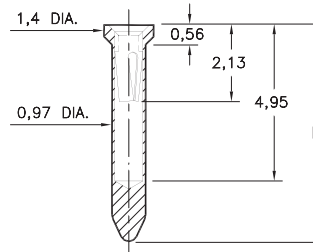


Basic Part Number	Length L
0461-0	10,16
0461-1	6,99
0461-2	4,57
0461-3	3,18
0461-4	1,52
0461-5	11,18

8579

8579-X-15-XX-X1-XX-10-0

Solder mount in 1,02 min. mounting hole
Also available on 24mm wide carrier tape:
1,200 parts per 330mm reel
Order as: 8579-0-57-XX-X1-XX-10-0



Basic Part Number	Length L
8579-0	5,94
8579-1	7,49

SPECIFICATIONS:

Shell Material: Brass Alloy 360, 1/2 Hard

Contact Material: Beryllium Copper Alloy 172, HT

Dimensions: Millimeters

Tolerances On: Lengths: ± 0,13

Diameters: ± 0,051

Angles: ± 2°



ORDER CODE: XXXX - X - 15 - XX - XX - XX - XX - 0

BASIC PART #

SPECIFY SHELL FINISH:

- 01 5,08µm TIN/LEAD OVER NICKEL
- ◆ 80 5,08µm TIN OVER NICKEL (RoHS)
- ◆ 15 0,25µm GOLD OVER NICKEL (RoHS)

SPECIFY CONTACT FINISH:

- 02 2,54µm TIN/LEAD OVER NICKEL
- ◆ 84 2,54µm TIN OVER NICKEL (RoHS)
- ◆ 27 0,76µm GOLD OVER NICKEL (RoHS)

SELECT CONTACT:

#09, #11 or #21 CONTACT (DATA ON PAGES 250 & 251)
(For alternate contact choices, see group A on page 248)



X-ON Electronics

Largest Supplier of Electrical and Electronic Components

Click to view similar products for [IC & Component Sockets](#) category:

Click to view products by [Mill-Max](#) manufacturer:

Other Similar products are found below :

[614-DG5](#) [670](#) [672](#) [673](#) [712-93-120-41-001000](#) [714-93-104-31-018000](#) [8-1437531-4](#) [8150-6P10](#) [835-43-014-10-001000](#) [851-41-006-10-001000](#) [851-43-008-20-001000](#) [851-43-014-20-001000](#) [851-93-006-20-001000](#) [851-93-010-20-001000](#) [853-43-020-10-001000](#) [86.010.0053.0](#) [116-43-308-41-007000](#) [121-13-318-41-001000](#) [121-13-320-41-001000](#) [121-13-308-41-001000](#) [123-43-314-41-801000](#) [123-43-420-41-001000](#) [122-13-316-41-001000](#) [123-13-624-41-001000](#) [123-43-306-41-001000](#) [12-3513-11](#) [123-91-320-41-001000](#) [126-43-310-41-002000](#) [AKSUN](#) [37V-T](#) [1437503-9](#) [1437504-1](#) [APA-640-G-P](#) [146-44-308-41-013000](#) [146-43-308-41-012000](#) [160-10-308-00-001000](#) [160-40-320-00-001000](#) [214-99-306-01-670800](#) [2-382761-4](#) [2-5331677-4](#) [2-640360-3](#) [2801-3-00-44-00-00-07-0](#) [940-44-052-17-400004](#) [299-83-314-11-001101](#) [1986000-2](#) [2103331641101000](#) [210-43-320-41-001000](#) [210-99-628-41-001000](#) [2-1437504-6](#) [2-1437515-5](#) [2-1437531-2](#)