

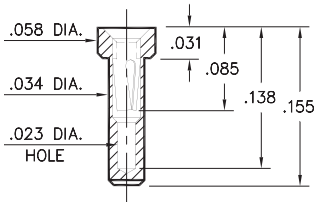
PIN RECEPTACLES

**FOR .015" - .020" DIAMETER PINS (#11 CONTACT)
AND .015" - .022" DIAMETER PINS (#21 CONTACT)
(SEE SPECIFIC CONTACT RANGE ON PAGE 251)**

0548

0548-0-15-XX-21-XX-10-0

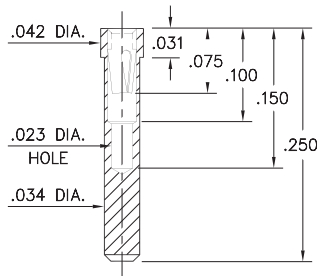
Solder mount in .036 min. mounting hole



8975

8975-0-15-XX-21-XX-10-0

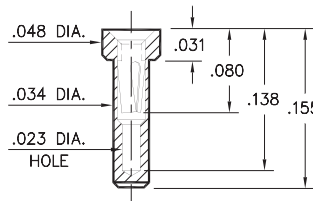
Solder mount in .036 min. mounting hole



3016

3016-0-15-XX-21-XX-10-0

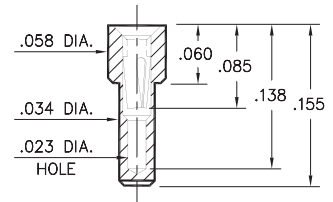
Solder mount in .036 min. mounting hole
Also available on 16mm wide carrier tape:
1,900 parts per 13" reel
See page 194.2 for Tape & Reel details



9548

9548-0-15-XX-21-XX-10-0

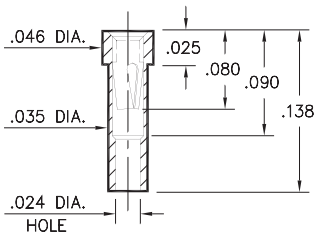
Solder mount in .036 min. mounting hole



8637

8637-0-15-XX-21-XX-10-0

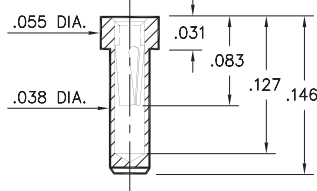
Solder mount in .037 min. mounting hole
Also available on 16mm wide carrier tape:
2,000 parts per 13" reel
See page 194.2 for Tape & Reel details



1407

1407-0-15-XX-11-XX-10-0

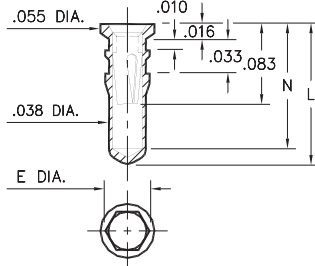
Solder mount in .040 min. mounting hole
Also available on 16mm wide carrier tape:
1,500 parts per 13" reel
See page 194.1 for Tape & Reel details



0553/4553/8553

X553-X-15-XX-X1-XX-10-0

Also available on 16mm wide carrier tape:
1,580 parts per 13" reel
See page 194.1 for Tape & Reel details



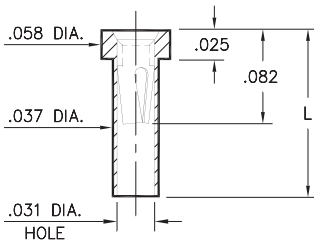
Hex press-fit in .041 plated through-hole
for Part Numbers **0553-X** and **8553-0** ONLY
Hex press-fit in .042 plated through-hole
for Part Number **4553-0** ONLY

Basic Part Number	Hex Dia. E	Length L	Depth N
0553-1	.044	.140	.124
0553-2	.044	.170	.154
0553-3	.044	.282	.266
4553-0	.045	.170	.154
8553-0	.044	.245	.229

0566

0566-X-15-XX-21-XX-10-0

Solder mount in .039 min. mounting hole

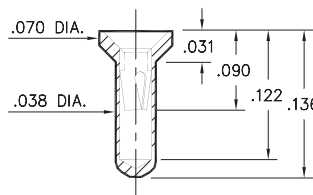


Basic Part Number	Length L
0566-1	.083
0566-2	.138

0442

0442-0-15-XX-11-XX-10-0

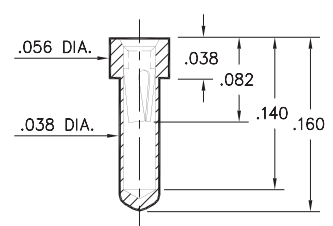
Solder mount in .040 min. mounting hole



0554

0554-0-15-XX-21-XX-10-0

Solder mount in .040 min. mounting hole



SPECIFICATIONS:

Shell Material: Brass Alloy 360, 1/2 Hard

Contact Material: Beryllium Copper Alloy 172, HT

Dimensions: Inches

Tolerances On: Lengths: ±.005

Diameters: ±.002

Angles: ± 2°



ORDER CODE: XXXX - X - XX - XX - XX - XX - 0

BASIC PART #

SPECIFY SHELL FINISH:

- 01 200 μ" TIN/LEAD OVER NICKEL
- ◆ 80 200 μ" TIN OVER NICKEL (RoHS)
- ◆ 15 10 μ" GOLD OVER NICKEL (RoHS)

SPECIFY CONTACT FINISH:

- 02 100 μ" TIN/LEAD OVER NICKEL
- ◆ 84 100 μ" TIN OVER NICKEL (RoHS)
- ◆ 27 30 μ" GOLD OVER NICKEL (RoHS)

SELECT CONTACT:

#11 or #21 CONTACT (DATA ON PAGE 251)

(For alternate contact choices, see group A on page 248)



X-ON Electronics

Largest Supplier of Electrical and Electronic Components

Click to view similar products for [Circuit Board Hardware - PCB category](#):

Click to view products by [Mill-Max manufacturer](#):

Other Similar products are found below :

[8919-0-00-15-00-00-03-0](#) [0135-0-15-01-30-27-04-0](#) [5970-1-15-01-32-14-04-0](#) [0149-0-15-15-30-27-04-0](#) [MBI 1 BLUE](#) [7305-0-15-15-47-14-10-0](#) [MLN 150/1 BLACK](#) [8579-0-15-80-11-27-10-0](#) [8579-1-15-15-11-27-10-0](#) [8830-0-15-01-22-14-10-0](#) [8836-0-00-21-00-00-03-0](#) [PRUEF 2 RED](#) [9976-0-00-00-00-00-03-0](#) [PW1616](#) [1215-3-05-00-00-00-01-0](#) [1231](#) [1303-0-15-15-47-14-04-0](#) [1404-3](#) [1404-4](#) [1406-4](#) [1407-3](#) [1406-3](#) [1407-4](#) [1408-3](#) [1424-4](#) [1427-3](#) [1419-4](#) [1426-4](#) [1548-103](#) [1938-0-00-00-00-00-03-0](#) [1942-0-00-00-00-00-03-0](#) [2101-3-00-44-00-00-07-0](#) [2108-2-00-50-00-00-07-0](#) [2109-2-00-44-00-00-07-0](#) [2110-2-00-44-00-00-07-0](#) [2111-2-00-00-00-00-07-0](#) [2113-4-00-44-00-00-07-0](#) [2301-3-00-44-00-00-07-0](#) [2308-1-00-50-00-00-07-0](#) [2313-2-00-00-00-00-07-0](#) [2315-2-01-44-00-00-07-0](#) [2317-2-00-50-00-00-07-0](#) [2333-1-00-50-00-00-07-0](#) [9000-0-00-00-00-00-03-0](#) [2506-2-00-50-00-00-07-0](#) [2507-2-01-44-00-00-07-0](#) [2508-2-00-44-00-00-07-0](#) [2561-2-00-44-00-00-07-0](#) [9220](#) [9234-0-15-15-30-14-10-0](#)