

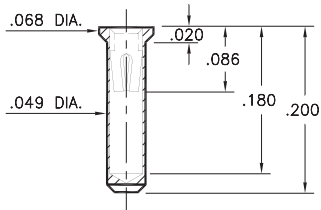
# PIN RECEPTACLES

FOR .015" - .025" DIAMETER PINS

## 0660

0660-0-15-XX-30-XX-10-0

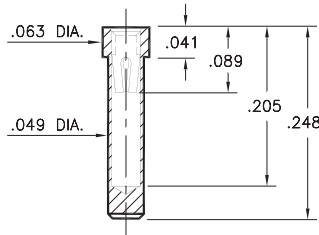
Solder mount in .051 min. mounting hole



## 0677

0677-0-15-XX-30-XX-10-0

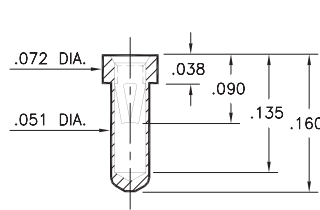
Solder mount in .051 min. mounting hole  
Also available on 24mm wide carrier tape:  
1,200 parts per 13" reel  
Order as: 0677-0-57-XX-30-XX-10-0



## 0555

0555-0-15-XX-32-XX-10-0

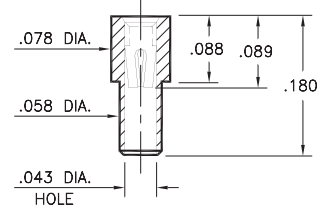
Solder mount in .053 min. mounting hole  
Also available on 16mm wide carrier tape:  
1,800 parts per 13" reel  
See page 194.4 for Tape & Reel details



## 0558

0558-0-15-XX-30-XX-10-0

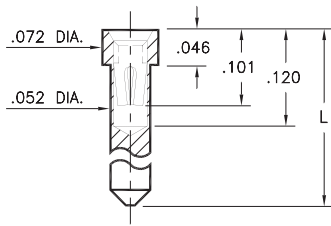
Solder mount in .061 min. mounting hole



## 0675/0679

067X-0-15-XX-30-XX-10-0

Solder mount in .054 min. mounting hole

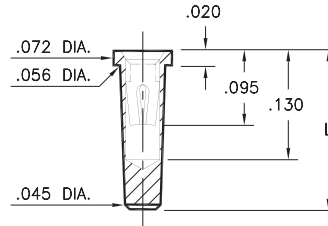


Basic Part Number	Length L
0675-0	.145
0679-0	.203

## 1065/1066/7065

X06X-0-15-XX-30-XX-10-0

Solder mount in .055 min. mounting hole

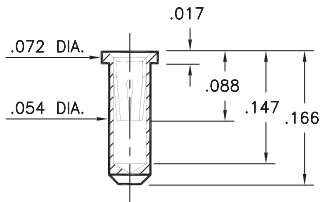


Basic Part Number	Length L
1065-0	.190
1066-0	.160
7065-0	.181

## 0682

0682-0-15-XX-32-XX-10-0

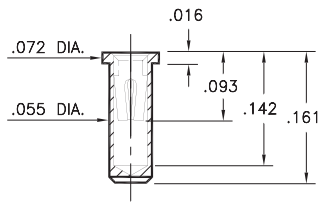
Solder mount in .056 min. mounting hole  
Also available on 16mm wide carrier tape:  
1,500 parts per 13" reel  
See page 194.4 for Tape & Reel details



## 0667

0667-0-15-XX-30-XX-10-0

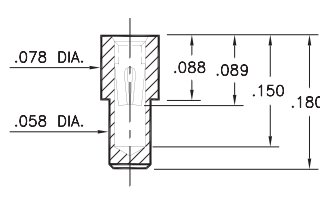
Solder mount in .057 min. mounting hole  
Also available on 16mm wide carrier tape:  
1,700 parts per 13" reel  
See page 194.3 for Tape & Reel details



## 0665

0665-0-15-XX-30-XX-10-0

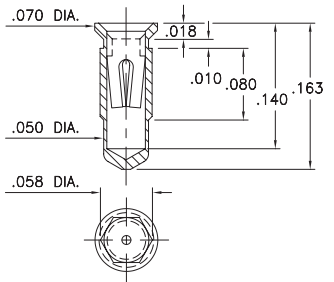
Solder mount in .061 min. mounting hole  
Also available on 16mm wide carrier tape:  
1,580 parts per 13" reel  
See page 194.3 for Tape & Reel details



## 4286

4286-0-15-XX-30-XX-10-0

Hex press-fit in .055 plated through-hole



### SPECIFICATIONS:

**Shell Material:** Brass Alloy 360, 1/2 Hard

**Contact Material:** Beryllium Copper Alloy 172, HT

**Dimensions:** Inches

**Tolerances On:** Lengths: ±.005

Diameters: ±.002

Angles: ± 2°



**ORDER CODE:** XXXX - X - XX - XX - XX - XX - 10 - 0

**BASIC PART #**

**SPECIFY SHELL FINISH:**

- 01 200 μ" TIN/LEAD OVER NICKEL
- ◆ 80 200 μ" TIN OVER NICKEL (RoHS)
- ◆ 15 10 μ" GOLD OVER NICKEL (RoHS)

**SPECIFY CONTACT FINISH:**

- 02 100 μ" TIN/LEAD OVER NICKEL
- ◆ 84 100 μ" TIN OVER NICKEL (RoHS)
- ◆ 27 30 μ" GOLD OVER NICKEL (RoHS)

**SELECT CONTACT:**

#30 or #32 CONTACT (DATA ON PAGE 253)

(For alternate contact choices, see groups B and C on page 248)



## X-ON Electronics

Largest Supplier of Electrical and Electronic Components

*Click to view similar products for [Circuit Board Hardware - PCB category](#):*

*Click to view products by [Mill-Max manufacturer](#):*

Other Similar products are found below :

[8919-0-00-15-00-00-03-0](#) [0135-0-15-01-30-27-04-0](#) [5970-1-15-01-32-14-04-0](#) [0149-0-15-15-30-27-04-0](#) [MBI 1 BLUE](#) [7305-0-15-15-47-14-10-0](#) [MLN 150/1 BLACK](#) [8579-0-15-80-11-27-10-0](#) [8579-1-15-15-11-27-10-0](#) [8830-0-15-01-22-14-10-0](#) [8836-0-00-21-00-00-03-0](#) [PRUEF 2 RED](#) [9976-0-00-00-00-00-03-0](#) [PW1616](#) [1215-3-05-00-00-00-01-0](#) [1231](#) [1303-0-15-15-47-14-04-0](#) [1404-3](#) [1404-4](#) [1406-4](#) [1407-3](#) [1406-3](#) [1407-4](#) [1408-3](#) [1424-4](#) [1427-3](#) [1419-4](#) [1426-4](#) [1548-103](#) [1938-0-00-00-00-00-03-0](#) [1942-0-00-00-00-00-03-0](#) [2101-3-00-44-00-00-07-0](#) [2108-2-00-50-00-00-07-0](#) [2109-2-00-44-00-00-07-0](#) [2110-2-00-44-00-00-07-0](#) [2111-2-00-00-00-00-07-0](#) [2113-4-00-44-00-00-07-0](#) [2301-3-00-44-00-00-07-0](#) [2308-1-00-50-00-00-07-0](#) [2313-2-00-00-00-00-07-0](#) [2315-2-01-44-00-00-07-0](#) [2333-1-00-50-00-00-07-0](#) [9000-0-00-00-00-00-03-0](#) [2506-2-00-50-00-00-07-0](#) [2507-2-01-44-00-00-07-0](#) [2508-2-00-44-00-00-07-0](#) [2561-2-00-44-00-00-07-0](#) [9220](#) [9234-0-15-15-30-14-10-0](#) [LAS S G BLACK](#)