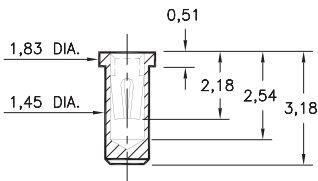


# PIN RECEPTACLES

FOR 0,38 - 0,64 DIAMETER PINS

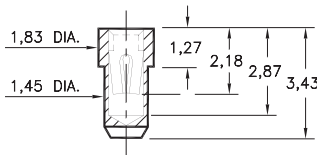
## 0669

**0669-0-15-XX-30-XX-10-0**  
Solder mount in 1,52 min. mounting hole  
Also available on 16mm wide carrier tape:  
1,700 parts per 330mm reel  
Order as: 0669-0-57-XX-30-XX-10-0



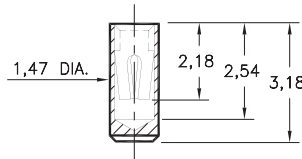
## 0670

**0670-0-15-XX-30-XX-10-0**  
Solder mount in 1,52 min. mounting hole  
Also available on 16mm wide carrier tape:  
2,000 parts per 330mm reel  
Order as: 0670-0-57-XX-30-XX-10-0



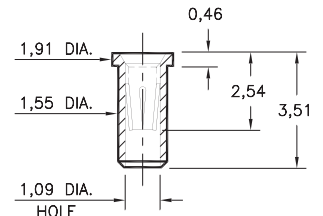
## 0673

**0673-0-15-XX-30-XX-10-0**  
Surface mount



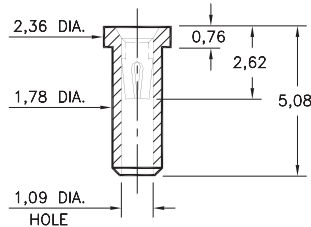
## 0666

**0666-0-15-XX-32-XX-10-0**  
Solder mount in 1,63 min. mounting hole  
Also available on 16mm wide carrier tape:  
2,000 parts per 330mm reel  
Order as: 0666-0-57-XX-32-XX-10-0



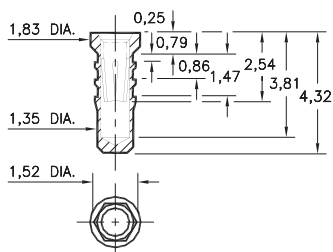
## 0341

**0341-0-15-XX-30-XX-10-0**  
Solder mount in 1,85 mounting hole  
Also available on 12mm wide carrier tape:  
1,400 parts per 330mm reel  
Order as: 0341-0-57-XX-30-XX-10-0



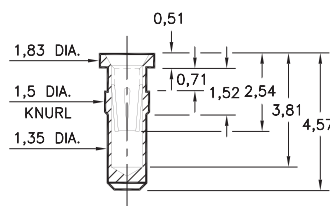
## 0252

**0252-0-15-XX-32-XX-10-0**  
Hex press-fit in 1,45 plated through-hole



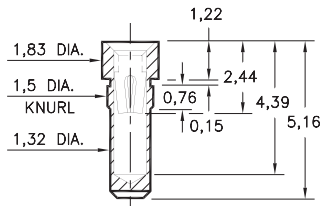
## 0678

**0678-0-15-XX-32-XX-10-0**  
Press-fit in 1,45 mounting hole



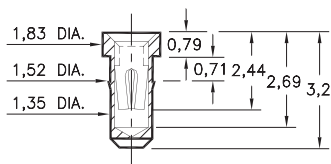
## 0676

**0676-0-15-XX-30-XX-10-0**  
Press-fit in 1,45 mounting hole



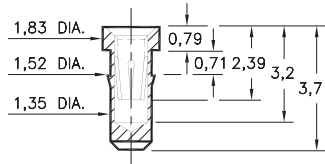
## 0697

**0697-0-15-XX-30-XX-10-0**  
Press-fit in 1,45 mounting hole



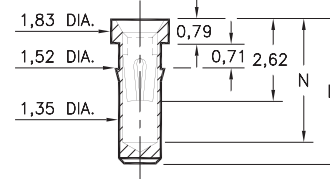
## 0668

**0668-0-15-XX-30-XX-10-0**  
Press-fit in 1,45 mounting hole



## 0253/1033

**XXX3-0-15-XX-30-XX-10-0**  
Press-fit in 1,45 mounting hole



Basic Part Number	Length L	Depth N
<b>0253-0</b>	4,39	3,76
<b>1033-0</b>	5,16	4,11

### SPECIFICATIONS:

**Shell Material:** Brass Alloy 360, 1/2 Hard  
**Contact Material:** Beryllium Copper Alloy 172, HT  
**Dimensions:** Millimeters  
**Tolerances On:** Lengths: ±0,13  
Diameters: ±0,051  
Angles: ±2°



**ORDER CODE:** XXXX - X - XX - XX - XX - XX - 10 - 0

**BASIC PART #**

**SPECIFY SHELL FINISH:**

- 01 5,08µm TIN/LEAD OVER NICKEL
- ◆ 80 5,08µm TIN OVER NICKEL (RoHS)
- ◆ 15 0,25µm GOLD OVER NICKEL (RoHS)

**SPECIFY CONTACT FINISH:**

- 02 2,54µm TIN/LEAD OVER NICKEL
- ◆ 84 2,54µm TIN OVER NICKEL (RoHS)
- ◆ 27 0,76µm GOLD OVER NICKEL (RoHS)

**SELECT CONTACT:**

**#30 or #32 CONTACT (DATA ON PAGE 253)**

(For alternate contact choices, see groups B and C on page 248)



## X-ON Electronics

Largest Supplier of Electrical and Electronic Components

*Click to view similar products for [Circuit Board Hardware - PCB category](#):*

*Click to view products by [Mill-Max manufacturer](#):*

Other Similar products are found below :

[8919-0-00-15-00-00-03-0](#) [0135-0-15-01-30-27-04-0](#) [5970-1-15-01-32-14-04-0](#) [0149-0-15-15-30-27-04-0](#) [MBI 1 BLUE](#) [7305-0-15-15-47-14-10-0](#) [MLN 150/1 BLACK](#) [8579-0-15-80-11-27-10-0](#) [8579-1-15-15-11-27-10-0](#) [8830-0-15-01-22-14-10-0](#) [8836-0-00-21-00-00-03-0](#) [PRUEF 2 RED](#) [9976-0-00-00-00-00-03-0](#) [PW1616](#) [1215-3-05-00-00-00-01-0](#) [1231](#) [1303-0-15-15-47-14-04-0](#) [1404-3](#) [1404-4](#) [1406-4](#) [1407-3](#) [1406-3](#) [1407-4](#) [1408-3](#) [1424-4](#) [1427-3](#) [1419-4](#) [1426-4](#) [1548-103](#) [1938-0-00-00-00-00-03-0](#) [1942-0-00-00-00-00-03-0](#) [2101-3-00-44-00-00-07-0](#) [2108-2-00-50-00-00-07-0](#) [2109-2-00-44-00-00-07-0](#) [2110-2-00-44-00-00-07-0](#) [2111-2-00-00-00-00-07-0](#) [2113-4-00-44-00-00-07-0](#) [2301-3-00-44-00-00-07-0](#) [2308-1-00-50-00-00-07-0](#) [2313-2-00-00-00-00-07-0](#) [2315-2-01-44-00-00-07-0](#) [2333-1-00-50-00-00-07-0](#) [9000-0-00-00-00-00-03-0](#) [2506-2-00-50-00-00-07-0](#) [2507-2-01-44-00-00-07-0](#) [2508-2-00-44-00-00-07-0](#) [2561-2-00-44-00-00-07-0](#) [9220](#) [9234-0-15-15-30-14-10-0](#) [LAS S G BLACK](#)