

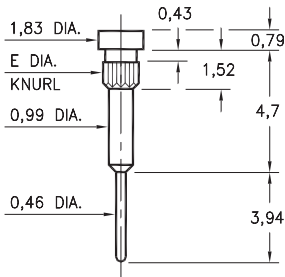
# MALE PCB PINS

## PRINTED CIRCUIT PINS

### 1067

1067-X-00-XX-00-00-03-0

Press-fit in 1,07/1,40 mounting hole

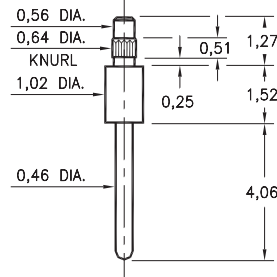


Basic Part Number	Knurl Dia. E	Mounting Hole
1067-1	1,47	1,40
1067-2	1,14	1,07

### 3158

3158-0-00-XX-00-00-03-0

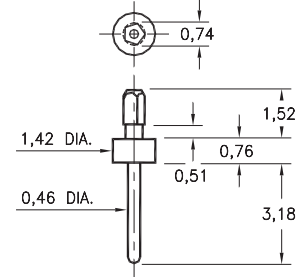
Press-fit in 0,58 mounting hole



### 9000

9000-0-00-XX-00-00-03-0

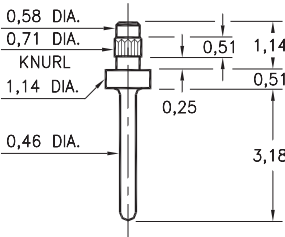
Pentagonal press-fit in 0,64 plated through-hole



### 3157

3157-0-00-XX-00-00-03-0

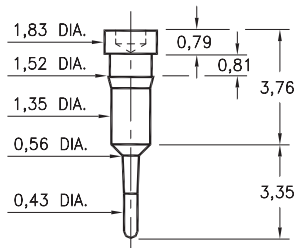
Press-fit in 0,66 mounting hole



### 0915

0915-0-00-XX-00-00-03-0

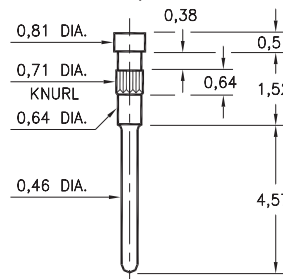
Press-fit in 1,45 mounting hole



### 3154

3154-0-00-XX-00-00-03-0

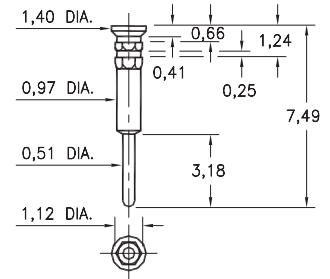
Press-fit in 0,66 mounting hole  
Pin material is Phosphor Bronze 544 (B2)



### 0542

0542-0-00-XX-00-00-03-0

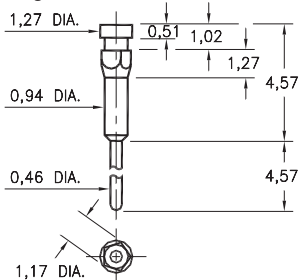
Hex press-fit in 0,99 plated through-hole



### 0522

0522-0-00-XX-00-00-03-0

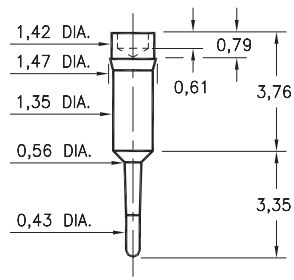
Pentagonal press-fit in 1,07 plated through-hole



### 0952

0952-0-00-XX-00-00-03-0

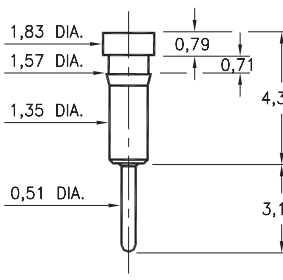
Press-fit in 1,42 mounting hole



### 0257

0257-0-00-XX-00-00-03-0

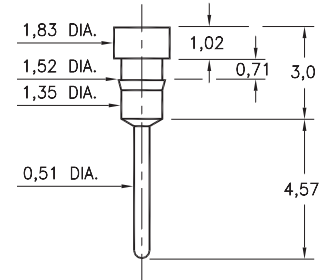
Press-fit in 1,50 mounting hole



### 8940

8940-0-00-XX-00-00-03-0

Press-fit in 1,45 mounting hole



#### SPECIFICATIONS:

**Pin Material:** Brass Alloy 360, 1/2 Hard  
(Except where noted)

**Dimensions:** Millimeters

**Tolerances On:** Lengths:  $\pm 0,13$   
Diameters:  $\pm 0,051$   
Angles:  $\pm 2^\circ$



ORDER CODE: XXXX - X - 00 - XX - 00 - 00 - 03 - 0

BASIC PART #

SPECIFY PIN FINISH:

- 01 5,08 $\mu$ m TIN/LEAD OVER NICKEL
- ◆ 80 5,08 $\mu$ m TIN OVER NICKEL (RoHS)
- ◆ 15 0,25 $\mu$ m GOLD OVER NICKEL (RoHS)
- ◆ 21 0,51 $\mu$ m GOLD OVER NICKEL (RoHS)
- ◆ 34 1,27 $\mu$ m GOLD OVER NICKEL (RoHS)



## X-ON Electronics

Largest Supplier of Electrical and Electronic Components

*Click to view similar products for [Headers & Wire Housings](#) category:*

*Click to view products by [Mill-Max](#) manufacturer:*

Other Similar products are found below :

[892-18-020-10-001101](#) [58102-G61-06LF](#) [582553-1](#) [0009485154](#) [009176003701906](#) [0050291907](#) [LY20-4P-DT1-P1E-BR](#) [02.125.8002.8](#)  
[609-3404](#) [61062-3](#) [61082-181009](#) [622-3653LF](#) [63453-116](#) [636-1030](#) [636-1427](#) [636-3427](#) [636-4007](#) [641938-9](#) [641991-4](#) [644827-2](#) [65817-](#)  
[010LF](#) [65817-015LF](#) [65863-015LF](#) [66207-023LF](#) [67095-007LF](#) [67601157](#) [68648-049](#) [70.362.1628.0](#) [70-4210](#) [70-4226B](#) [70-4853B](#) [707-](#)  
[5020](#) [707-5028](#) [71.350.2428.0](#) [71918-208LF](#) [71961-016LF](#) [733-134](#) [733-162](#) [754199-000](#) [760-3052](#) [787-8014-00](#) [79531-3000](#) [FCN-](#)  
[360C032-B](#) [FCN-367T-T012/H](#) [FCN-723D010/2](#) [80.063.4001.1](#) [800-90-001-10-001000](#) [800-90-010-10-002000](#) [801-43-002-10-013000](#)  
[801-43-006-10-002000](#)