

MAX solutions

New Mill-Max SMT Spring-Loaded Connector Products



Mill-Max is pleased to announce the development of several new SMT Spring-Loaded Connectors (SLCs). All are offered as discrete contacts and many are available in tape and reel packaging.

New Mill-Max part family 0910-0 and 0910-1 through -4 are discrete SLCs specifically designed for production tape and reel assembly.

Part 0967 is a horizontal mount SMT SLC designed for low-profile board to board interconnections.

New Mill-Max part family 0990-0 and 0990-1 through -4 and 0997-0 through -9 are discrete SLCs featuring a large base utilized for either increased PCB stability or assembly in non-PCB applications such as a face plate. These part families offer a range of application heights from .137" to .430" (3,48mm to 10,92mm.)

For further information visit: mill-max.com/PR603.

(12/09 -- 561, 603)

Mill-Max Mfg. Corp. • 190 Pine Hollow Road, Oyster Bay, NY 11771-0300
516-922-6000 • Fax: 516-922-9253 • www.mill-max.com





SPRING-LOADED CONNECTORS

Discrete Spring-Loaded Contacts



0900-0

0900-0-00-00-00-00-11-0
Short Stroke, Surface mount
Lowest profile

0900-1→4

Basic Part Number	Length A
0900-1	.177
0900-2	.197
0900-3	.217
0900-4	.236

0900-X-00-00-00-00-11-0
Standard Stroke, Surface mount
Low profile

0934

0934-0-15-20-74-14-26-0
Standard Stroke
Surface mount

0936

0936-0-15-20-75-14-11-0
Standard Stroke
Surface mount

0928

0928-0-15-20-77-14-11-0
Long Stroke
Surface mount

0907-0→9

Basic Part Number	Length A
0907-0	.255
0907-1	.275
0907-2	.295
0907-3	.315
0907-4	.335
0907-5	.350
0907-6	.370
0907-7	.390
0907-8	.410
0907-9	.430

0907-X-15-20-75-14-11-0
Standard Stroke, Surface mount
High profile

0913

0913-0-15-20-77-14-11-0
Long Stroke
Surface mount

0925

0925-0-15-20-73-14-26-0
Standard Stroke
Surface mount

0927

0927-0-15-20-75-14-11-0
Standard Stroke
Surface mount

0905

0905-0-00-00-00-00-11-0
Standard Stroke, Surface mount
Highest Profile

ORDER CODE: 09XX - X - 15 - 20 - 7X - 14 - XX - 0
 Spring Number ↗

MECHANICAL & ELECTRICAL SPECIFICATIONS:

DURABILITY: 1,000,000 cycles
 CURRENT RATING: 2A continuous, 3A peak
 CONTACT RESISTANCE: 20 mΩ max.

MATERIAL SPECIFICATIONS:
 SLEEVE & PLUNGER MATERIAL: Copper Alloy
 SPRING MATERIAL: Beryllium Copper
 SLEEVE & PLUNGER FINISH: 20 μm Gold over Nickel
 SPRING FINISH: 10 μm Gold over Nickel
 DIMENSION IN INCHES:
 TOLERANCES ON: LENGTHS: ±.006
 DIAMETERS: ±.002
 ANGLES: ± 2°



SPRING NUMBER	Mid. STROKE	Max. STROKE	FORCE @ Mid. Stroke	Initial Force (Pre-load)
73	.0275	.055	60	25
74	.0275	.055	50	15
75	.0275	.055	60	25
77	.045	.090	60	25

73, 74, 75, 77 Springs are not interchangeable

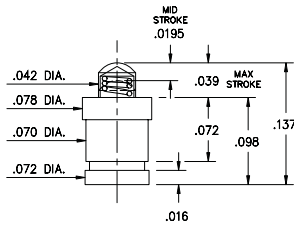


SPRING-LOADED CONNECTORS

Discrete Spring-Loaded Contacts

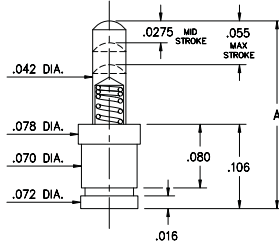


0910-0



0910-0-57-20-76-14-11-0
Short Stroke, Surface mount
Packaged on 16mm wide carrier
tape: 1,500 parts per 13" reel.

0910-1⇒4



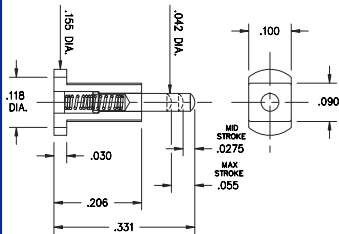
0910-X-57-20-75-14-11-0
Standard Stroke, Surface mount
Packaged on carrier tape.
See chart for tape width and qty. per reel



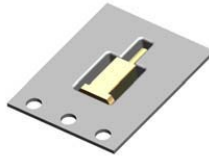
Basic Part Number	Length A
0910-1	.177
0910-2	.197
0910-3	.217
0910-4	.236

Basic Part Number	Tape Width	Quantity per Reel
0910-1	16mm	1,500
0910-2	24mm	1,100
0910-3	24mm	1,100
0910-4	24mm	1,100

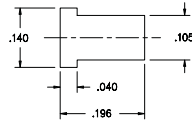
0967



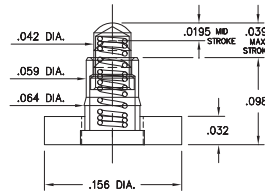
0967-0-15-20-75-14-11-0
Standard Stroke, Horizontal Surface mount
Also available on 16mm wide carrier
tape: 2,200 parts per 13" reel.
Order as: 0967-0-58-20-75-14-11-0



P.C.B. Layout

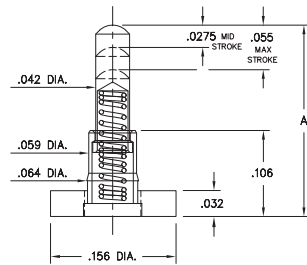


0990-0



0990-0-50-20-76-14-11-0
Short Stroke, Surface mount
Large Base

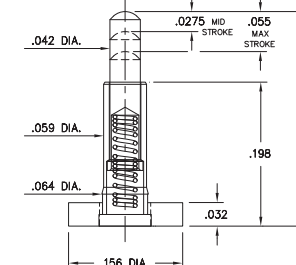
0990-1⇒4



0990-X-50-20-75-14-11-0
Standard Stroke, Surface mount
Large Base

Basic Part Number	Length A
0990-1	.177
0990-2	.197
0990-3	.217
0990-4	.236

0997-0⇒9



0997-X-50-20-75-14-11-0
Standard Stroke, Surface mount
Large Base

Basic Part Number	Length A
0997-0	.255
0997-1	.275
0997-2	.295
0997-3	.315
0997-4	.335
0997-5	.350
0997-6	.370
0997-7	.390
0997-8	.410
0997-9	.430

ORDER CODE: 09XX - X - XX - 20 - 7X - 14 - 11 - 0

Spring Number ↗

MATERIAL SPECIFICATIONS:

SLEEVE & PLUNGER MATERIAL: Copper Alloy
SPRING MATERIAL: Beryllium Copper
SLEEVE & PLUNGER FINISH: 20 μm Gold over Nickel
SPRING FINISH: 10 μm Gold over Nickel
DIMENSION IN INCHES:
TOLERANCES ON: LENGTHS: ±.006
DIAMETERS: ±.002
ANGLES: ± 2°



MECHANICAL & ELECTRICAL SPECIFICATIONS:

DURABILITY: 1,000,000 cycles
CURRENT RATING: 2A continuous, 3A peak
CONTACT RESISTANCE: 20 mΩ max.

SPRING NUMBER	Mid. STROKE	Max. STROKE	FORCE @ Mid. Stroke	Initial Force (Pre-load)
75	.0275	.055	60	25
76	.0195	.039	60	25

75 & 76 Springs are not interchangeable

X-ON Electronics

Largest Supplier of Electrical and Electronic Components

Click to view similar products for [Circuit Board Hardware - PCB category](#):

Click to view products by [Mill-Max manufacturer](#):

Other Similar products are found below :

[8919-0-00-15-00-00-03-0](#) [0135-0-15-01-30-27-04-0](#) [5970-1-15-01-32-14-04-0](#) [0149-0-15-15-30-27-04-0](#) [MBI 1 BLUE](#) [7305-0-15-15-47-14-10-0](#) [MLN 150/1 BLACK](#) [8579-0-15-80-11-27-10-0](#) [8579-1-15-15-11-27-10-0](#) [8830-0-15-01-22-14-10-0](#) [8836-0-00-21-00-00-03-0](#) [PRUEF 2 RED](#) [9976-0-00-00-00-00-03-0](#) [PW1616](#) [1215-3-05-00-00-00-01-0](#) [1231](#) [1303-0-15-15-47-14-04-0](#) [1404-3](#) [1404-4](#) [1406-4](#) [1407-3](#) [1406-3](#) [1407-4](#) [1408-3](#) [1424-4](#) [1427-3](#) [1419-4](#) [1426-4](#) [1548-103](#) [1938-0-00-00-00-00-03-0](#) [1942-0-00-00-00-00-03-0](#) [2101-3-00-44-00-00-07-0](#) [2108-2-00-50-00-00-07-0](#) [2109-2-00-44-00-00-07-0](#) [2110-2-00-44-00-00-07-0](#) [2111-2-00-00-00-00-07-0](#) [2113-4-00-44-00-00-07-0](#) [2301-3-00-44-00-00-07-0](#) [2308-1-00-50-00-00-07-0](#) [2313-2-00-00-00-00-07-0](#) [2315-2-01-44-00-00-07-0](#) [2317-2-00-50-00-00-07-0](#) [2333-1-00-50-00-00-07-0](#) [9000-0-00-00-00-00-03-0](#) [2506-2-00-50-00-00-07-0](#) [2507-2-01-44-00-00-07-0](#) [2508-2-00-44-00-00-07-0](#) [2561-2-00-44-00-00-07-0](#) [9220](#) [9234-0-15-15-30-14-10-0](#)