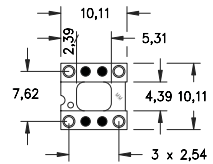
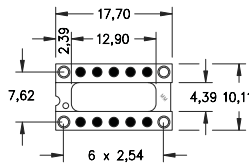


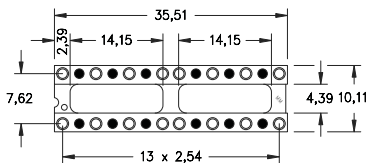
**Fig. 1**



**Fig. 2**



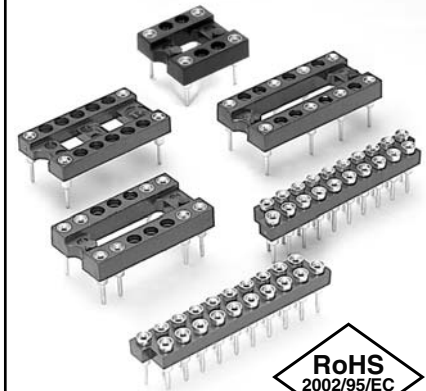
**Fig. 3**



**Fig. 4**

○ = Loaded Position ● = Empty Position

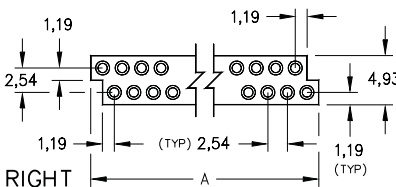
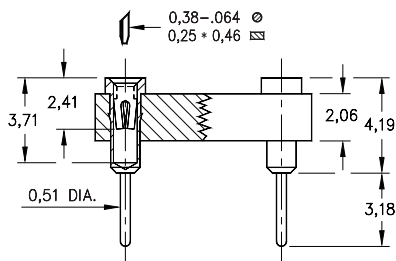
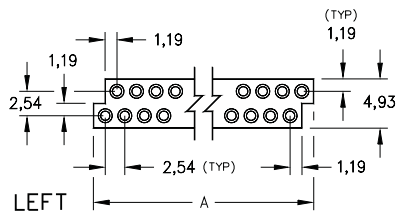
- Relay sockets accept devices with I/O pins on 2,54 grid.
- Additional Relay DIP socket patterns are available on Page 64.
- Zig-Zag strip sockets are suitable for IC's and memory chips with staggered double row patterns.
- Series 110 and 410 use MM #1001 receptacles. See page 136 for details.
- Receptacles use Hi-Rel, 4 finger #30 BeCu contact rated at 3 amps. See page 218 for details.
- Insulators are high temp. thermoplastic.



### Selectively Loaded Sockets For Dual-In-Line Relays

	No. of pins	Ordering Information
<b>Fig. 1</b>	6	110-XX-210-10-001000
<b>Fig. 2</b>	4	110-XX-308-10-001000
<b>Fig. 3</b>	4	110-XX-314-10-001000
<b>Fig. 4</b>	16	110-XX-328-10-001000

### Staggered (Zig-Zag) Strip Sockets



Dim 'A'	No. of pins	Insulator Body	Ordering Information
18,97	14	Left, Stackable	410-93-214-10-001000
18,97	14	Right, Stackable	410-93-214-10-002000
21,51	16	Left, Stackable	410-93-216-10-001000
21,51	16	Right, Stackable	410-93-216-10-002000
26,59	20	Left, Stackable	410-93-220-10-001000
26,59	20	Right, Stackable	410-93-220-10-002000
31,67	24	Left, Stackable	410-93-224-10-001000
31,67	24	Right, Stackable	410-93-224-10-002000
36,75	28	Left, Stackable	410-93-228-10-001000
36,75	28	Right, Stackable	410-93-228-10-002000

For Electrical, Mechanical & Environmental Data, See pg. 4

XX=Plating Code See Below

For RoHS compliance select ◇ plating code.

SPECIFY PLATING CODE XX=	13◇	93	43◇
Sleeve (Pin)	0,25µm Au	5,08µm Sn/Pb	5,08µm Sn
Contact (Clip)	0,76µm Au	0,76µm Au	0,76µm Au

## X-ON Electronics

Largest Supplier of Electrical and Electronic Components

*Click to view similar products for [IC & Component Sockets](#) category:*

*Click to view products by [Mill-Max](#) manufacturer:*

Other Similar products are found below :

[0066-3-17-15-30-14-02-0](#) [670](#) [672](#) [673](#) [694-13-640-00-672-000](#) [712-93-120-41-001000](#) [714-93-104-31-018000](#) [8059-4G1-LF](#) [807-22-001-10-001101](#) [807-22-001-10-006101](#) [807-22-001-30-011101](#) [807-22-001-30-012101](#) [807-22-001-30-013101](#) [807-22-001-30-014101](#) [8-1437531-4](#) [8150-6P10](#) [833-93-034-10-001000](#) [851-41-006-10-001000](#) [851-43-008-20-001000](#) [851-43-014-20-001000](#) [851-93-006-20-001000](#) [851-93-010-20-001000](#) [853-43-020-10-001000](#) [86.010.0053.0](#) [116-43-308-41-007000](#) [PX-68LCC](#) [121-13-318-41-001000](#) [121-13-320-41-001000](#) [121-13-308-41-001000](#) [123-43-314-41-801000](#) [123-43-420-41-001000](#) [123-87-320-41-001101](#) [122-13-316-41-001000](#) [123-13-624-41-001000](#) [123-43-306-41-001000](#) [12-3513-11](#) [123-91-320-41-001000](#) [126-43-310-41-002000](#) [AKSUN 37V-T](#) [1437503-9](#) [1437504-1](#) [146-44-308-41-013000](#) [APO-320-G-T](#) [146-43-308-41-012000](#) [160-10-308-00-001000](#) [160-40-320-00-001000](#) [214-99-306-01-670800](#) [232-1270-02-0602](#) [2-382761-4](#) [2-5331677-4](#)