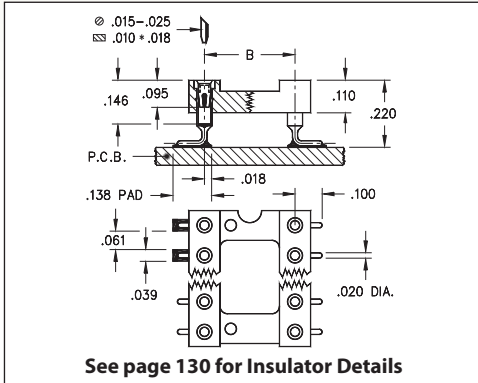
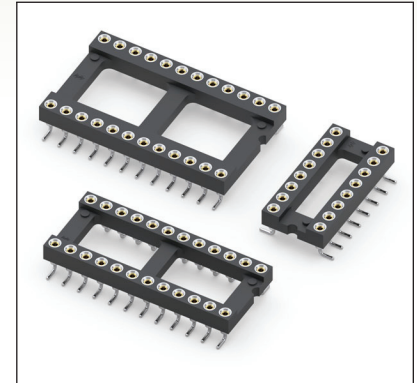


# DUAL-IN-LINE SOCKETS

## SERIES 110...105 • SURFACE MOUNT, GULL WING • OPEN FRAME



- Socket pins feature closed end construction eliminating any solder wicking problems
- Gull wing terminals provide maximum strength and permit easy visual inspection of solder joints. Series 110 uses Mill-Max #1005 pins. See page 166 for details
- Hi-Rel, 4-finger BeCu #30 contact is rated at 3 amps. See page 253 for details
- Insulators are high temperature thermoplastic, suitable for all soldering operations
- For Electrical, Mechanical and Environmental Data, see page 264 for details



Total number of pins				Quantity per tube	<h3>ORDERING INFORMATION</h3>															
	A	B	C																	
10	0.5	0.2	0.3	40	110-XX-210-41-105000															
4	0.2	0.3	0.4	102	110-XX-304-41-105000															
6	0.3	0.3	0.4	67	110-XX-306-41-105000															
8	0.4	0.3	0.4	50	110-XX-308-41-105000															
10	0.5	0.3	0.4	40	110-XX-310-41-105000															
14	0.7	0.3	0.4	28	110-XX-314-41-105000															
16	0.8	0.3	0.4	25	110-XX-316-41-105000															
18	0.9	0.3	0.4	22	110-XX-318-41-105000															
20	1.0	0.3	0.4	20	110-XX-320-41-105000															
22	1.1	0.3	0.4	18	110-XX-322-41-105000															
24	1.2	0.3	0.4	16	110-XX-324-41-105000															
28	1.4	0.3	0.4	14	110-XX-328-41-105000															
20	1.0	0.4	0.5	20	110-XX-420-41-105000															
22	1.1	0.4	0.5	18	110-XX-422-41-105000															
24	1.2	0.4	0.5	16	110-XX-424-41-105000															
28	1.4	0.4	0.5	14	110-XX-428-41-105000															
32	1.6	0.4	0.5	12	110-XX-432-41-105000															
24	1.2	0.6	0.7	16	110-XX-624-41-105000															
28	1.4	0.6	0.7	14	110-XX-628-41-105000															
32	1.6	0.6	0.7	12	110-XX-632-41-105000															
36	1.8	0.6	0.7	11	110-XX-636-41-105000															
40	2.0	0.6	0.7	10	110-XX-640-41-105000															
42	2.1	0.6	0.7	9	110-XX-642-41-105000															
48	2.4	0.6	0.7	8	110-XX-648-41-105000															
50	2.5	0.6	0.7	8	110-XX-650-41-105000															
52	2.6	0.6	0.7	7	110-XX-652-41-105000															
50	2.5	0.9	1.0	8	110-XX-950-41-105000															
52	2.6	0.9	1.0	7	110-XX-952-41-105000															
64	3.2	0.9	1.0	6	110-XX-964-41-105000															
See page 264 for coplanarity information					<b>SPECIFY PLATING CODE XX=</b>					91	93			43	47					
					Sleeve (Pin)										200 μ" Sn/Pb	200 μ" Sn/Pb			200 μ" Sn	200 μ" Sn
					Contact (Clip)										10 μ" Au	30 μ" Au			30 μ" Au	Au Flash

XX=Plating Code  
See Below



## X-ON Electronics

Largest Supplier of Electrical and Electronic Components

*Click to view similar products for [IC & Component Sockets](#) category:*

*Click to view products by [Mill-Max](#) manufacturer:*

Other Similar products are found below :

[0066-3-17-15-30-14-02-0](#) [670](#) [672](#) [673](#) [694-13-640-00-672-000](#) [712-93-120-41-001000](#) [714-93-104-31-018000](#) [8059-4G1-LF](#) [807-22-001-10-001101](#) [807-22-001-10-006101](#) [807-22-001-30-011101](#) [807-22-001-30-012101](#) [807-22-001-30-013101](#) [807-22-001-30-014101](#) [8-1437531-4](#) [8150-6P10](#) [833-93-034-10-001000](#) [851-41-006-10-001000](#) [851-43-008-20-001000](#) [851-43-014-20-001000](#) [851-93-006-20-001000](#) [851-93-010-20-001000](#) [853-43-020-10-001000](#) [86.010.0053.0](#) [116-43-308-41-007000](#) [PX-68LCC](#) [121-13-318-41-001000](#) [121-13-320-41-001000](#) [121-13-308-41-001000](#) [123-43-314-41-801000](#) [123-43-420-41-001000](#) [123-87-320-41-001101](#) [122-13-316-41-001000](#) [123-13-624-41-001000](#) [123-43-306-41-001000](#) [12-3513-11](#) [123-91-320-41-001000](#) [126-43-310-41-002000](#) [AKSUN 37V-T](#) [1437503-9](#) [1437504-1](#) [146-44-308-41-013000](#) [APO-320-G-T](#) [146-43-308-41-012000](#) [160-10-308-00-001000](#) [160-40-320-00-001000](#) [214-99-306-01-670800](#) [232-1270-02-0602](#) [2-382761-4](#) [2-5331677-4](#)