

# DUAL-IN-LINE SOCKETS

## SERIES 110 • SELECTIVELY LOADED RELAY DIP SOCKET, SOLDER TAIL

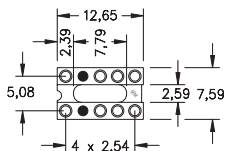
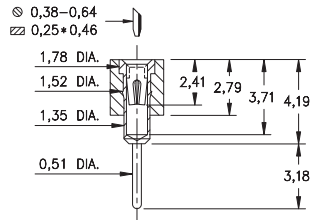


Fig. 1

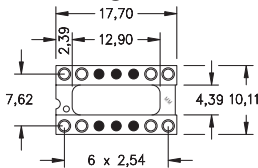


Fig. 2

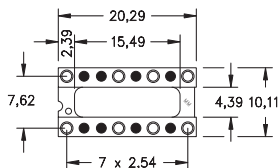


Fig. 3

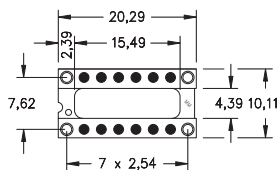


Fig. 4

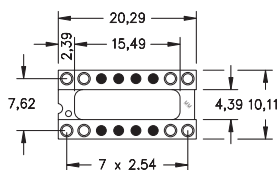


Fig. 5

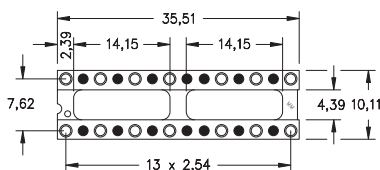
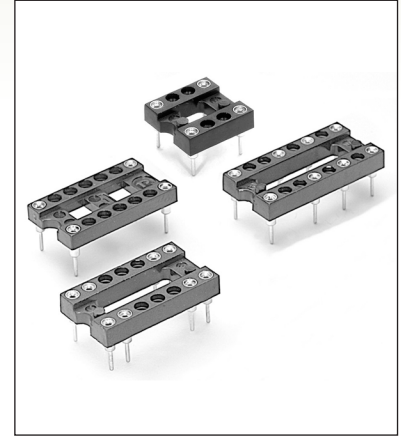


Fig. 6

○ = Loaded Position ● = Empty Position

- Relay sockets accept devices with I/O pins on 2,54 grid
- Additional Relay DIP socket patterns are available on Page 134
- Series 110 use MM #1001 receptacles. See page 165 for details
- Hi-Rel, 4-finger BeCu #30 contact is rated at 3 amps. See page 253 for details
- Insulators are high temperature thermoplastic, suitable for all soldering operations
- For Electrical, Mechanical and Environmental Data, see page 264 for details



## ORDERING INFORMATION

| FIG.   | Series 110...002     | 8 Position Relay Socket  |
|--------|----------------------|--------------------------|
| FIG. 1 | 110-XX-210-10-002000 |                          |
| FIG. 2 | Series 110...002     | 8 Position Relay Socket  |
| FIG. 2 | 110-XX-314-10-002000 |                          |
| FIG. 3 | Series 110...003     | 8 Position Relay Socket  |
| FIG. 3 | 110-XX-316-10-003000 |                          |
| FIG. 4 | Series 110...004     | 4 Position Relay Socket  |
| FIG. 4 | 110-XX-316-10-004000 |                          |
| FIG. 5 | Series 110...005     | 8 Position Relay Socket  |
| FIG. 5 | 110-XX-316-10-005000 |                          |
| FIG. 6 | Series 110...002     | 14 Position Relay Socket |
| FIG. 6 | 110-XX-328-10-002000 |                          |

|                              |           |                      |           |
|------------------------------|-----------|----------------------|-----------|
| XX=Plating Code<br>See Below |           | RoHS-2<br>2011/65/EU |           |
| SPECIFY PLATING CODE XX=     | 13        | 93                   | 43        |
| Sleeve (Pin)                 | 0,25µm Au | 5,08µm Sn/Pb         | 5,08µm Sn |
| Contact (Clip)               | 0,76µm Au | 0,76µm Au            | 0,76µm Au |



## X-ON Electronics

Largest Supplier of Electrical and Electronic Components

*Click to view similar products for [IC & Component Sockets](#) category:*

*Click to view products by [Mill-Max](#) manufacturer:*

Other Similar products are found below :

[0066-3-17-15-30-14-02-0](#) [670](#) [672](#) [673](#) [694-13-640-00-672-000](#) [712-93-120-41-001000](#) [714-93-104-31-018000](#) [8059-4G1-LF](#) [807-22-001-10-001101](#) [807-22-001-10-006101](#) [807-22-001-30-011101](#) [807-22-001-30-012101](#) [807-22-001-30-013101](#) [807-22-001-30-014101](#) [8-1437531-4](#) [8150-6P10](#) [833-93-034-10-001000](#) [851-41-006-10-001000](#) [851-43-008-20-001000](#) [851-43-014-20-001000](#) [851-93-006-20-001000](#) [851-93-010-20-001000](#) [853-43-020-10-001000](#) [86.010.0053.0](#) [116-43-308-41-007000](#) [PX-68LCC](#) [121-13-318-41-001000](#) [121-13-320-41-001000](#) [121-13-308-41-001000](#) [123-43-314-41-801000](#) [123-43-420-41-001000](#) [123-87-320-41-001101](#) [122-13-316-41-001000](#) [123-13-624-41-001000](#) [123-43-306-41-001000](#) [12-3513-11](#) [123-91-320-41-001000](#) [126-43-310-41-002000](#) [AKSUN 37V-T](#) [1437503-9](#) [1437504-1](#) [146-44-308-41-013000](#) [APO-320-G-T](#) [146-43-308-41-012000](#) [160-10-308-00-001000](#) [160-40-320-00-001000](#) [214-99-306-01-670800](#) [232-1270-02-0602](#) [2-382761-4](#) [2-5331677-4](#)