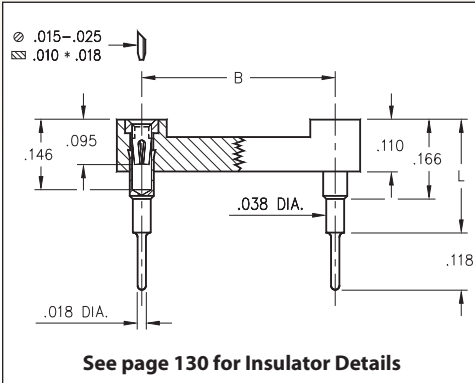
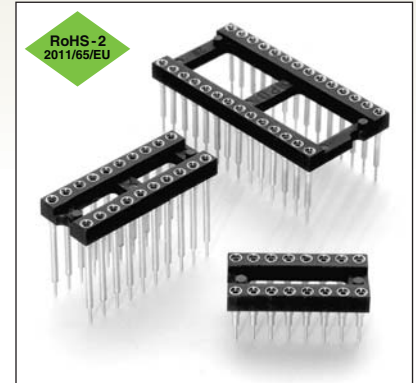


DUAL-IN-LINE SOCKETS

SERIES 116 • ELEVATED • OPEN FRAME



- Ideal for raised component requirements and stacking of PCBs
- Sockets are XY stackable
- Hi-Rel, 4-finger BeCu #30 contact is rated at 3 amps. See page 253 for details
- Series 116 uses MM #0153-X pins. See page 167 for details
- Insulators are high temperature thermoplastic, suitable for all soldering operations
- For Electrical, Mechanical and Environmental Data, see page 264 for details



Total number of pins	Quantity per tube			ORDERING INFORMATION					
				L = .236 (#0153-1 pin)	L = .315 (#0153-2 pin)	L = .402 (#0153-3 pin)	L = .472 (#0153-4 pin)	L = .594 (#0153-5 pin)	
	A	B	C						
10	0.5	0.2	0.3	40	116-XX-210-41-006000	116-XX-210-41-003000	116-XX-210-41-007000	116-XX-210-41-008000	116-XX-210-41-001000
4	0.2	0.3	0.4	102	116-XX-304-41-006000	116-XX-304-41-003000	116-XX-304-41-007000	116-XX-304-41-008000	116-XX-304-41-001000
6	0.3	0.3	0.4	67	116-XX-306-41-006000	116-XX-306-41-003000	116-XX-306-41-007000	116-XX-306-41-008000	116-XX-306-41-001000
8	0.4	0.3	0.4	50	116-XX-308-41-006000	116-XX-308-41-003000	116-XX-308-41-007000	116-XX-308-41-008000	116-XX-308-41-001000
10	0.5	0.3	0.4	40	116-XX-310-41-006000	116-XX-310-41-003000	116-XX-310-41-007000	116-XX-310-41-008000	116-XX-310-41-001000
14	0.7	0.3	0.4	28	116-XX-314-41-006000	116-XX-314-41-003000	116-XX-314-41-007000	116-XX-314-41-008000	116-XX-314-41-001000
16	0.8	0.3	0.4	25	116-XX-316-41-006000	116-XX-316-41-003000	116-XX-316-41-007000	116-XX-316-41-008000	116-XX-316-41-001000
18	0.9	0.3	0.4	22	116-XX-318-41-006000	116-XX-318-41-003000	116-XX-318-41-007000	116-XX-318-41-008000	116-XX-318-41-001000
20	1.0	0.3	0.4	20	116-XX-320-41-006000	116-XX-320-41-003000	116-XX-320-41-007000	116-XX-320-41-008000	116-XX-320-41-001000
22	1.1	0.3	0.4	18	116-XX-322-41-006000	116-XX-322-41-003000	116-XX-322-41-007000	116-XX-322-41-008000	116-XX-322-41-001000
24	1.2	0.3	0.4	16	116-XX-324-41-006000	116-XX-324-41-003000	116-XX-324-41-007000	116-XX-324-41-008000	116-XX-324-41-001000
28	1.4	0.3	0.4	14	116-XX-328-41-006000	116-XX-328-41-003000	116-XX-328-41-007000	116-XX-328-41-008000	116-XX-328-41-001000
20	1.0	0.4	0.5	20	116-XX-420-41-006000	116-XX-420-41-003000	116-XX-420-41-007000	116-XX-420-41-008000	116-XX-420-41-001000
22	1.1	0.4	0.5	18	116-XX-422-41-006000	116-XX-422-41-003000	116-XX-422-41-007000	116-XX-422-41-008000	116-XX-422-41-001000
24	1.2	0.4	0.5	16	116-XX-424-41-006000	116-XX-424-41-003000	116-XX-424-41-007000	116-XX-424-41-008000	116-XX-424-41-001000
28	1.4	0.4	0.5	14	116-XX-428-41-006000	116-XX-428-41-003000	116-XX-428-41-007000	116-XX-428-41-008000	116-XX-428-41-001000
32	1.6	0.4	0.5	12	116-XX-432-41-006000	116-XX-432-41-003000	116-XX-432-41-007000	116-XX-432-41-008000	116-XX-432-41-001000
24	1.2	0.6	0.7	16	116-XX-624-41-006000	116-XX-624-41-003000	116-XX-624-41-007000	116-XX-624-41-008000	116-XX-624-41-001000
28	1.4	0.6	0.7	14	116-XX-628-41-006000	116-XX-628-41-003000	116-XX-628-41-007000	116-XX-628-41-008000	116-XX-628-41-001000
32	1.6	0.6	0.7	12	116-XX-632-41-006000	116-XX-632-41-003000	116-XX-632-41-007000	116-XX-632-41-008000	116-XX-632-41-001000
36	1.8	0.6	0.7	11	116-XX-636-41-006000	116-XX-636-41-003000	116-XX-636-41-007000	116-XX-636-41-008000	116-XX-636-41-001000
40	2.0	0.6	0.7	10	116-XX-640-41-006000	116-XX-640-41-003000	116-XX-640-41-007000	116-XX-640-41-008000	116-XX-640-41-001000
42	2.1	0.6	0.7	9	116-XX-642-41-006000	116-XX-642-41-003000	116-XX-642-41-007000	116-XX-642-41-008000	116-XX-642-41-001000
48	2.4	0.6	0.7	8	116-XX-648-41-006000	116-XX-648-41-003000	116-XX-648-41-007000	116-XX-648-41-008000	116-XX-648-41-001000
50	2.5	0.6	0.7	8	116-XX-650-41-006000	116-XX-650-41-003000	116-XX-650-41-007000	116-XX-650-41-008000	116-XX-650-41-001000
52	2.6	0.6	0.7	7	116-XX-652-41-006000	116-XX-652-41-003000	116-XX-652-41-007000	116-XX-652-41-008000	116-XX-652-41-001000
50	2.5	0.9	1.0	8	116-XX-950-41-006000	116-XX-950-41-003000	116-XX-950-41-007000	116-XX-950-41-008000	116-XX-950-41-001000
52	2.6	0.9	1.0	7	116-XX-952-41-006000	116-XX-952-41-003000	116-XX-952-41-007000	116-XX-952-41-008000	116-XX-952-41-001000
64	3.2	0.9	1.0	6	116-XX-964-41-006000	116-XX-964-41-003000	116-XX-964-41-007000	116-XX-964-41-008000	116-XX-964-41-001000
SPECIFY PLATING CODE XX=					91	93	41 ◆	43 ◆	XX=Plating Code See to Left
Sleeve (Pin)					200 μ" Sn/Pb	200 μ" Sn/Pb	200 μ" Sn	200 μ" Sn	
Contact (Clip)					10 μ" Au	30 μ" Au	10 μ" Au	30 μ" Au	



X-ON Electronics

Largest Supplier of Electrical and Electronic Components

Click to view similar products for [IC & Component Sockets](#) category:

Click to view products by [Mill-Max](#) manufacturer:

Other Similar products are found below :

[614-DG5](#) [670](#) [672](#) [673](#) [712-93-120-41-001000](#) [714-93-104-31-018000](#) [8-1437531-4](#) [8150-6P10](#) [835-43-014-10-001000](#) [851-41-006-10-001000](#) [851-43-008-20-001000](#) [851-43-014-20-001000](#) [851-93-006-20-001000](#) [851-93-010-20-001000](#) [853-43-020-10-001000](#) [86.010.0053.0](#) [116-43-308-41-007000](#) [121-13-318-41-001000](#) [121-13-320-41-001000](#) [121-13-308-41-001000](#) [123-43-314-41-801000](#) [123-43-420-41-001000](#) [122-13-316-41-001000](#) [123-13-624-41-001000](#) [123-43-306-41-001000](#) [12-3513-11](#) [123-91-320-41-001000](#) [126-43-310-41-002000](#) [AKSUN](#) [37V-T](#) [1437503-9](#) [1437504-1](#) [APA-640-G-P](#) [146-44-308-41-013000](#) [146-43-308-41-012000](#) [160-10-308-00-001000](#) [160-40-320-00-001000](#) [214-99-306-01-670800](#) [2-382761-4](#) [2-5331677-4](#) [2-640360-3](#) [2801-3-00-44-00-00-07-0](#) [940-44-052-17-400004](#) [299-83-314-11-001101](#) [1986000-2](#) [2103331641101000](#) [210-43-320-41-001000](#) [210-99-628-41-001000](#) [2-1437504-6](#) [2-1437515-5](#) [2-1437531-2](#)