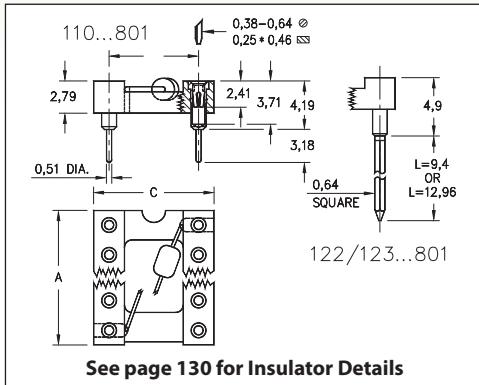
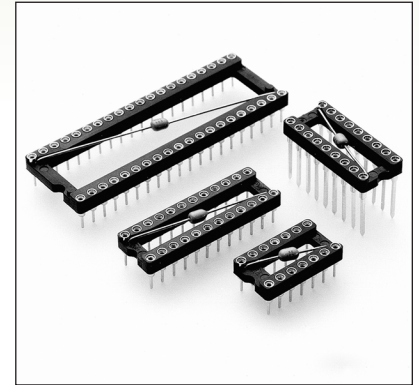


DUAL-IN-LINE SOCKETS

SERIES 110, 122, 123 • INTEGRAL DECOUPLING CAPACITOR • OPEN FRAME



- Low profile DIP sockets w/ integral decoupling capacitor: .1μ F 20%-50V multi-layer ceramic epoxy encapsulated. Temp. range: -25° C to +85° C
- Hi-Rel, 4-finger BeCu #30 contact is rated at 3 amps. See page 253 for details
- Series 110, 122 and 123 use MM #1001, #0088 or #0089 pins. See pages 165 & 198 for details
- Insulators are high temperature thermoplastic, suitable for all soldering operations
- For Electrical, Mechanical and Environmental Data, see page 264 for details



| Total number of pins | | | | Quantity per tube | ORDERING INFORMATION | | |
|--|------|-------|------|-------------------|--|-------------------------------|---------------------------------|
| | A | B | C | | Solder Tail | L = 9,4 (2 Level Wrappost) | L = 12,96 (3 Level Wrappost) |
| 14 | 17,7 | 7,62 | 10,1 | 28 | 110-XX-314-41-801000 | 122-XX-314-41-801000 | 123-XX-314-41-801000 |
| 16 | 20,3 | 7,62 | 10,1 | 25 | 110-XX-316-41-801000 | 122-XX-316-41-801000 | 123-XX-316-41-801000 |
| 18 | 22,8 | 7,62 | 10,1 | 22 | 110-XX-318-41-801000 | 122-XX-318-41-801000 | 123-XX-318-41-801000 |
| 20 | 25,3 | 7,62 | 10,1 | 20 | 110-XX-320-41-801000 | 122-XX-320-41-801000 | 123-XX-320-41-801000 |
| 22 | 27,8 | 7,62 | 10,1 | 18 | 110-XX-322-41-801000 | 122-XX-322-41-801000 | 123-XX-322-41-801000 |
| 24 | 30,4 | 7,62 | 10,1 | 16 | 110-XX-324-41-801000 | 122-XX-324-41-801000 | 123-XX-324-41-801000 |
| 28 | 35,5 | 7,62 | 10,1 | 14 | 110-XX-328-41-801000 | 122-XX-328-41-801000 | 123-XX-328-41-801000 |
| 22 | 27,8 | 10,16 | 12,7 | 18 | 110-XX-422-41-801000 | 122-XX-422-41-801000 | 123-XX-422-41-801000 |
| 24 | 30,4 | 15,24 | 17,7 | 16 | 110-XX-624-41-801000 | 122-XX-624-41-801000 | 123-XX-624-41-801000 |
| 28 | 35,5 | 15,24 | 17,7 | 14 | 110-XX-628-41-801000 | 122-XX-628-41-801000 | 123-XX-628-41-801000 |
| 32 | 40,6 | 15,24 | 17,7 | 12 | 110-XX-632-41-801000 | 122-XX-632-41-801000 | 123-XX-632-41-801000 |
| 40 | 50,8 | 15,24 | 17,7 | 10 | 110-XX-640-41-801000 | 122-XX-640-41-801000 | 123-XX-640-41-801000 |
| <div style="border: 1px solid black; border-radius: 50%; padding: 5px; display: inline-block;"> XX=Plating Code See Below </div> | | | | | <div style="border: 1px solid black; padding: 5px; display: inline-block;"> RoHS - 2 2011/65/EU </div> | | |
| SPECIFY PLATING CODE XX = | | | | | 13 | 93 | 43 |
| Sleeve (Pin) | | | | | 0,25μm Au | 5,08μm Sn/Pb | 5,08μm Sn |
| Contact (Clip) | | | | | 0,76μm Au | 0,76μm Au | 0,76μm Au |

X-ON Electronics

Largest Supplier of Electrical and Electronic Components

Click to view similar products for [IC & Component Sockets](#) category:

Click to view products by [Mill-Max](#) manufacturer:

Other Similar products are found below :

[0066-3-17-15-30-14-02-0](#) [670](#) [672](#) [673](#) [694-13-640-00-672-000](#) [712-93-120-41-001000](#) [714-93-104-31-018000](#) [8059-4G1-LF](#) [807-22-001-10-001101](#) [807-22-001-10-006101](#) [807-22-001-30-011101](#) [807-22-001-30-012101](#) [807-22-001-30-013101](#) [807-22-001-30-014101](#) [8-1437531-4](#) [8150-6P10](#) [833-93-034-10-001000](#) [851-41-006-10-001000](#) [851-43-008-20-001000](#) [851-43-014-20-001000](#) [851-93-006-20-001000](#) [851-93-010-20-001000](#) [853-43-020-10-001000](#) [86.010.0053.0](#) [116-43-308-41-007000](#) [PX-68LCC](#) [121-13-318-41-001000](#) [121-13-320-41-001000](#) [121-13-308-41-001000](#) [123-43-314-41-801000](#) [123-43-420-41-001000](#) [123-87-320-41-001101](#) [122-13-316-41-001000](#) [123-13-624-41-001000](#) [123-43-306-41-001000](#) [12-3513-11](#) [123-91-320-41-001000](#) [126-43-310-41-002000](#) [AKSUN 37V-T](#) [1437503-9](#) [1437504-1](#) [146-44-308-41-013000](#) [APO-320-G-T](#) [146-43-308-41-012000](#) [160-10-308-00-001000](#) [160-40-320-00-001000](#) [214-99-306-01-670800](#) [232-1270-02-0602](#) [2-382761-4](#) [2-5331677-4](#)