

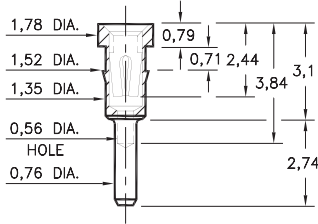
PIN RECEPTACLES

FOR 0,38 - 0,64 DIAMETER PINS

0501

0501-0-15-XX-30-XX-04-0

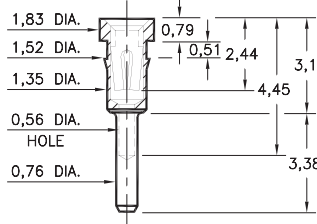
Press-fit in 1,45 mounting hole



8427

8427-0-15-XX-30-XX-04-0

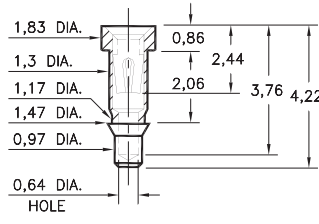
Press-fit in 1,45 mounting hole



1434

1434-0-15-XX-30-XX-10-0

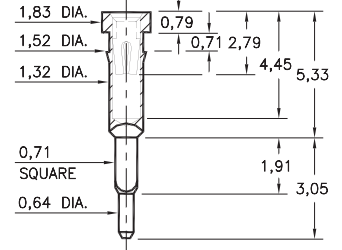
Press-fit in 1,4 mounting hole



9970

9970-0-15-XX-30-XX-04-0

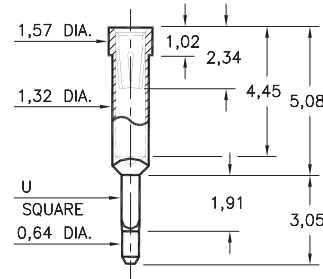
Square press-fit in 0,81 ± 0,05 plated through-hole



5970

5970-X-15-XX-32-XX-04-0

Square press-fit for 0,81 or 1,0 ± 0,05 plated through-hole

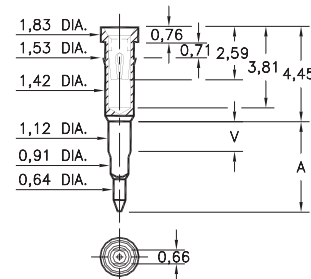


Basic Part Number	U Square	Mounting Hole
5970-1	0,71	0,81
5970-2	0,86	1,0

0477/0478

047X-0-18-XX-30-XX-04-0

Solderless press-fit in 0,97 +0,08 / -0,05 plated through-hole (use 1.1mm drill prior to plating)

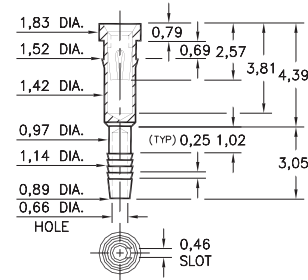


Basic Part Number	Board Thickness	Length V	Length A
0477-0	1,57	1,91	4,45
0478-0	3,18	3,56	6,35

4612

4612-0-31-XX-30-XX-04-0

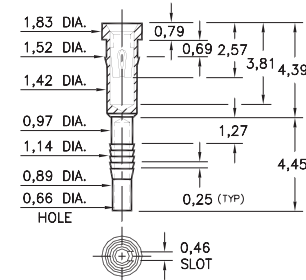
Compliant press-fit in 1,02 ± 0,08 plated through-hole. For 1,52 → 2,54 thick board



4613

4613-0-31-XX-30-XX-04-0

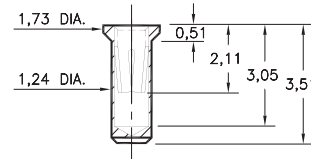
Compliant press-fit in 1,02 ± 0,08 plated through-hole. For 2,29 → 3,30 thick board



0680

0680-0-15-XX-32-XX-10-0

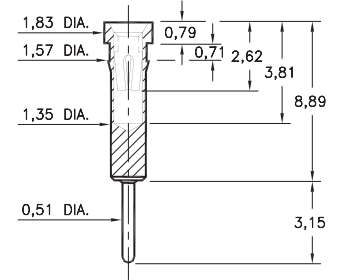
Solder mount in 1,3 min. mounting hole
Also available on 16mm wide carrier tape:
1,700 parts per 330mm reel
Order as: 0680-0-57-XX-32-XX-10-0



0149

0149-0-15-XX-30-XX-04-0

Press-fit in 1,5 mounting hole



SPECIFICATIONS:

Shell Material: Brass Alloy 360, 1/2 Hard

Contact Material: Beryllium Copper Alloy 172, HT

Dimensions: Millimeters

Tolerances On: Lengths: ± 0,13

Diameters: ± 0,051

Angles: ± 2°



ORDER CODE: XXXX - X - XX - XX - XX - XX - XX - 0

BASIC PART #

SPECIFY SHELL FINISH:

01 5,08µm TIN/LEAD OVER NICKEL

◆ 80 5,08µm TIN OVER NICKEL (RoHS)

◆ 15 0,25µm GOLD OVER NICKEL (RoHS)

SPECIFY CONTACT FINISH:

02 2,54µm TIN/LEAD OVER NICKEL

◆ 84 2,54µm TIN OVER NICKEL (RoHS)

◆ 27 0,76µm GOLD OVER NICKEL (RoHS)

SELECT CONTACT:

#30 or #32 CONTACT (DATA ON PAGE 253)

(For alternate contact choices, see groups B and C on page 248)



X-ON Electronics

Largest Supplier of Electrical and Electronic Components

Click to view similar products for [Circuit Board Hardware - PCB category](#):

Click to view products by [Mill-Max manufacturer](#):

Other Similar products are found below :

[8919-0-00-15-00-00-03-0](#) [0135-0-15-01-30-27-04-0](#) [5970-1-15-01-32-14-04-0](#) [0149-0-15-15-30-27-04-0](#) [MBI 1 BLUE](#) [7305-0-15-15-47-14-10-0](#) [MLN 150/1 BLACK](#) [8579-0-15-80-11-27-10-0](#) [8579-1-15-15-11-27-10-0](#) [8830-0-15-01-22-14-10-0](#) [8836-0-00-21-00-00-03-0](#) [PRUEF 2 RED](#) [9976-0-00-00-00-00-03-0](#) [PW1616](#) [1215-3-05-00-00-00-01-0](#) [1231](#) [1303-0-15-15-47-14-04-0](#) [1404-3](#) [1404-4](#) [1406-4](#) [1407-3](#) [1406-3](#) [1407-4](#) [1408-3](#) [1424-4](#) [1427-3](#) [1419-4](#) [1426-4](#) [1548-103](#) [1938-0-00-00-00-00-03-0](#) [1942-0-00-00-00-00-03-0](#) [2101-3-00-44-00-00-07-0](#) [2108-2-00-50-00-00-07-0](#) [2109-2-00-44-00-00-07-0](#) [2110-2-00-44-00-00-07-0](#) [2111-2-00-00-00-00-07-0](#) [2113-4-00-44-00-00-07-0](#) [2301-3-00-44-00-00-07-0](#) [2308-1-00-50-00-00-07-0](#) [2313-2-00-00-00-00-07-0](#) [2315-2-01-44-00-00-07-0](#) [2333-1-00-50-00-00-07-0](#) [9000-0-00-00-00-00-03-0](#) [2506-2-00-50-00-00-07-0](#) [2507-2-01-44-00-00-07-0](#) [2508-2-00-44-00-00-07-0](#) [2561-2-00-44-00-00-07-0](#) [9220](#) [9234-0-15-15-30-14-10-0](#) [LAS S G BLACK](#)