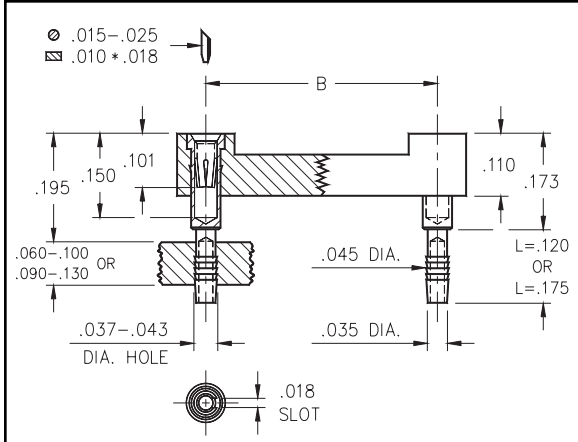


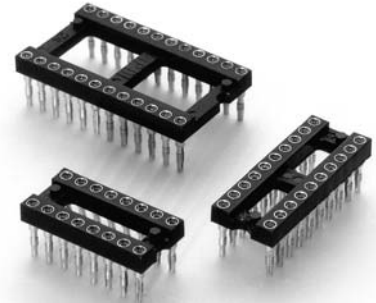


DUAL-IN-LINE SOCKETS Solderless Press-Fit, Compliant Tail Open Frame

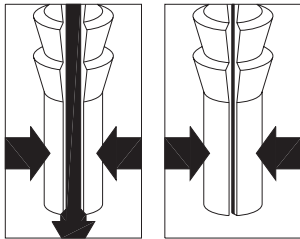
Series 146



- Unique compliant tail pins conform to .040 ±.003" finished hole diameter without stressing inner layers.
- Two tail lengths are offered for .060"-.100" and .090"-.130" thick panels.
- Uses M-M# 4612 or 4613 pins with #30 contact rated at 3 amps. See page 131 for pin details.



APPLICATION OF COMPLIANT TAIL PINS



Mill-Max' patented* compliant tail features precision machined pins that are hollow and slotted to conform to a .040" ± .003" diameter PTH. As the pin is inserted, the slot compresses to fit the PTH, thus avoiding damage (see illustration at left). The pin's tail has fine serrations that form a perfect "gas tight" connection that doesn't require soldering. And since the pin doesn't damage the hole, compliant tail sockets and connectors can be easily replaced.

*Patent No. 4,799,904.

| Total number of pins | | | | Quantity per tube | Ordering Information | | | | | |
|--------------------------|-----|-----|-----|-------------------|---|----------------------|---|----|----------|----------|
| | A | B | C | | L=.120 (for .060"-.100" thick panel) | | L=.175 (for .090"-.130" thick panel) | | | |
| | | | | | 93 | 99 | 43 | 44 | | |
| 6 | 0.3 | 0.3 | 0.4 | 67 | 146-XX-306-41-012000 | 146-XX-306-41-013000 | <div style="border: 1px solid green; padding: 5px; color: green; font-weight: bold;"> For RoHS compliance, select ◇ plating code. For the all gold option (XX=13) also change part number from 146-XX-XXX-41-01X000 to 146-13-XXX-41-01X100 </div> <div style="margin-top: 20px; border: 1px solid green; padding: 10px; color: green; font-weight: bold; text-align: center;"> RoHS 2002/95/EC </div> | | | |
| 8 | 0.4 | 0.3 | 0.4 | 50 | 146-XX-308-41-012000 | 146-XX-308-41-013000 | | | | |
| 14 | 0.7 | 0.3 | 0.4 | 28 | 146-XX-314-41-012000 | 146-XX-314-41-013000 | | | | |
| 16 | 0.8 | 0.3 | 0.4 | 25 | 146-XX-316-41-012000 | 146-XX-316-41-013000 | | | | |
| 18 | 0.9 | 0.3 | 0.4 | 22 | 146-XX-318-41-012000 | 146-XX-318-41-013000 | | | | |
| 20 | 1.0 | 0.3 | 0.4 | 20 | 146-XX-320-41-012000 | 146-XX-320-41-013000 | | | | |
| 24 | 1.2 | 0.3 | 0.4 | 16 | 146-XX-324-41-012000 | 146-XX-324-41-013000 | | | | |
| 22 | 1.1 | 0.4 | 0.5 | 18 | 146-XX-422-41-012000 | 146-XX-422-41-013000 | | | | |
| 24 | 1.2 | 0.6 | 0.7 | 16 | 146-XX-624-41-012000 | 146-XX-624-41-013000 | | | | |
| 28 | 1.4 | 0.6 | 0.7 | 14 | 146-XX-628-41-012000 | 146-XX-628-41-013000 | | | | |
| 32 | 1.6 | 0.6 | 0.7 | 12 | 146-XX-632-41-012000 | 146-XX-632-41-013000 | | | | |
| 40 | 2.0 | 0.6 | 0.7 | 10 | 146-XX-640-41-012000 | 146-XX-640-41-013000 | | | | |
| SPECIFY PLATING CODE XX= | | | | 13 | 93 | 99 | | | 43 | 44 |
| Sleeve (Pin) | | | | 10μ" Au | 200μ" Sn/Pb | 200μ" Sn/Pb | | | 200μ" Sn | 200μ" Sn |
| Contact (Clip) | | | | 30μ" Au | 30μ" Au | 200μ" Sn/Pb | | | 30μ" Au | 200μ" Sn |

X-ON Electronics

Largest Supplier of Electrical and Electronic Components

Click to view similar products for [IC & Component Sockets](#) category:

Click to view products by [Mill-Max](#) manufacturer:

Other Similar products are found below :

[0066-3-17-15-30-14-02-0](#) [670](#) [672](#) [673](#) [694-13-640-00-672-000](#) [712-93-120-41-001000](#) [714-93-104-31-018000](#) [8059-4G1-LF](#) [807-22-001-10-001101](#) [807-22-001-10-006101](#) [807-22-001-30-011101](#) [807-22-001-30-012101](#) [807-22-001-30-013101](#) [807-22-001-30-014101](#) [8-1437531-4](#) [8150-6P10](#) [833-93-034-10-001000](#) [851-41-006-10-001000](#) [851-43-008-20-001000](#) [851-43-014-20-001000](#) [851-93-006-20-001000](#) [851-93-010-20-001000](#) [853-43-020-10-001000](#) [86.010.0053.0](#) [116-43-308-41-007000](#) [PX-68LCC](#) [121-13-318-41-001000](#) [121-13-320-41-001000](#) [121-13-308-41-001000](#) [123-43-314-41-801000](#) [123-43-420-41-001000](#) [123-87-320-41-001101](#) [122-13-316-41-001000](#) [123-13-624-41-001000](#) [123-43-306-41-001000](#) [12-3513-11](#) [123-91-320-41-001000](#) [126-43-310-41-002000](#) [AKSUN 37V-T](#) [1437503-9](#) [1437504-1](#) [146-44-308-41-013000](#) [APO-320-G-T](#) [146-43-308-41-012000](#) [160-10-308-00-001000](#) [160-40-320-00-001000](#) [214-99-306-01-670800](#) [232-1270-02-0602](#) [2-382761-4](#) [2-5331677-4](#)