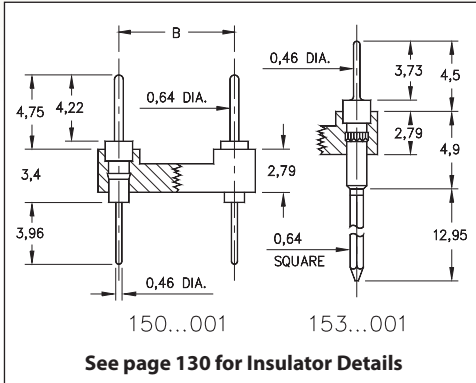
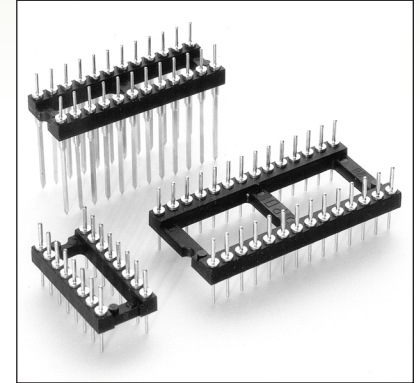


DUAL-IN-LINE HEADERS

SERIES 150, 153 • SOLDER TAIL AND WRAPOST • OPEN FRAME



- Series 150 DIL Headers are equipped with 0,64 dia. pins MM #0290. See page 215 for details
- Series 153 DIL Headers have 3-level wraposts MM #5301. See page 227 for details
- Both series have 0,46 dia. solder tails which are pluggable into standard contacts
- Insulators are high temperature thermoplastic, suitable for all soldering operations
- For Electrical, Mechanical and Environmental Data, see page 264 for details



Total number of pins				Quantity per tube	ORDERING INFORMATION						
	A	B	C		Solder Tail	3 Level Wrapost					
10	12,6	5,08	7,6	40	150-XX-210-00-001000	153-XX-210-00-001000					
4	5,0	7,62	10,1	102	150-XX-304-00-001000	153-XX-304-00-001000					
6	7,6	7,62	10,1	67	150-XX-306-00-001000	153-XX-306-00-001000					
8	10,1	7,62	10,1	50	150-XX-308-00-001000	153-XX-308-00-001000					
10	12,6	7,62	10,1	40	150-XX-310-00-001000	153-XX-310-00-001000					
14	17,7	7,62	10,1	29	150-XX-314-00-001000	153-XX-314-00-001000					
16	20,3	7,62	10,1	25	150-XX-316-00-001000	153-XX-316-00-001000					
18	22,8	7,62	10,1	22	150-XX-318-00-001000	153-XX-318-00-001000					
20	25,3	7,62	10,1	20	150-XX-320-00-001000	153-XX-320-00-001000					
22	27,8	7,62	10,1	18	150-XX-322-00-001000	153-XX-322-00-001000					
24	30,4	7,62	10,1	16	150-XX-324-00-001000	153-XX-324-00-001000					
28	35,5	7,62	10,1	14	150-XX-328-00-001000	153-XX-328-00-001000					
20	25,4	10,16	12,7	20	150-XX-420-00-001000	153-XX-420-00-001000					
22	27,8	10,16	12,7	18	150-XX-422-00-001000	153-XX-422-00-001000					
24	30,4	10,16	12,7	16	150-XX-424-00-001000	153-XX-424-00-001000					
28	35,5	10,16	12,7	14	150-XX-428-00-001000	153-XX-428-00-001000					
32	40,6	10,16	12,7	12	150-XX-432-00-001000	153-XX-432-00-001000					
24	30,4	15,24	17,7	16	150-XX-624-00-001000	153-XX-624-00-001000					
28	35,5	15,24	17,7	14	150-XX-628-00-001000	153-XX-628-00-001000					
32	40,6	15,24	17,7	12	150-XX-632-00-001000	153-XX-632-00-001000					
36	45,7	15,24	17,7	11	150-XX-636-00-001000	153-XX-636-00-001000					
40	50,8	15,24	17,7	10	150-XX-640-00-001000	153-XX-640-00-001000					
42	53,3	15,24	17,7	9	150-XX-642-00-001000	153-XX-642-00-001000					
48	60,9	15,24	17,7	8	150-XX-648-00-001000	153-XX-648-00-001000					
50	63,5	15,24	17,7	8	150-XX-650-00-001000	153-XX-650-00-001000					
52	66,0	15,24	17,7	7	150-XX-652-00-001000	153-XX-652-00-001000					
50	63,5	22,86	25,3	8	150-XX-950-00-001000	153-XX-950-00-001000					
52	66,0	22,86	25,3	7	150-XX-952-00-001000	153-XX-952-00-001000					
64	81,2	22,86	25,3	6	150-XX-964-00-001000	153-XX-964-00-001000					
					SPECIFY PLATING CODE XX =			10 ◆	90	40 ◆	
					Pin Plating			0,25µm Au	5,08µm Sn/Pb	5,08µm Sn	

XX=Plating Code
See Below

X-ON Electronics

Largest Supplier of Electrical and Electronic Components

Click to view similar products for [Headers & Wire Housings](#) category:

Click to view products by [Mill-Max](#) manufacturer:

Other Similar products are found below :

[892-18-020-10-001101](#) [58102-G61-06LF](#) [582553-1](#) [0009485154](#) [009176003701906](#) [0050291907](#) [LY20-4P-DT1-P1E-BR](#) [02.125.8002.8](#)
[609-3404](#) [61062-3](#) [61082-181009](#) [622-3653LF](#) [63453-116](#) [636-1030](#) [636-1427](#) [636-3427](#) [636-4007](#) [641938-9](#) [641991-4](#) [644827-2](#) [65817-](#)
[010LF](#) [65817-015LF](#) [65863-015LF](#) [66207-023LF](#) [67095-007LF](#) [67601157](#) [68648-049](#) [70.362.1628.0](#) [70-4210](#) [70-4226B](#) [70-4853B](#) [707-](#)
[5020](#) [707-5028](#) [71.350.2428.0](#) [71918-208LF](#) [71961-016LF](#) [733-134](#) [733-162](#) [754199-000](#) [760-3052](#) [787-8014-00](#) [79531-3000](#) [FCN-](#)
[360C032-B](#) [FCN-367T-T012/H](#) [FCN-723D010/2](#) [80.063.4001.1](#) [800-90-001-10-001000](#) [800-90-010-10-002000](#) [801-43-002-10-013000](#)
[801-43-006-10-002000](#)