

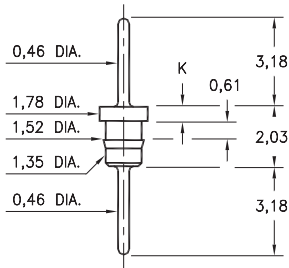
# MALE PCB PINS

## PRINTED CIRCUIT PINS

### 1752/6458

XXXX-0-00-XX-00-00-03-0

Press-fit in 1,45 mounting hole

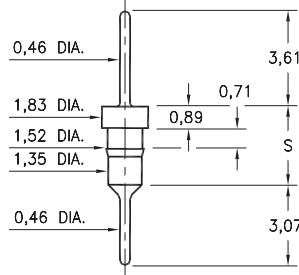


Basic Part Number	Length K
1752-0	0,51
6458-0	0,89

### 3413/8404

X4XX-0-00-XX-00-00-03-0

Press-fit in 1,45 mounting hole

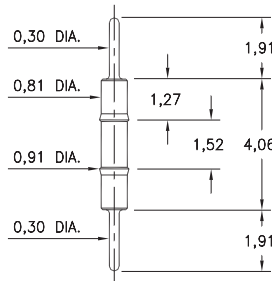


Basic Part Number	Length S
3413-0	3,0
8404-0	3,33

### 9075

9075-0-00-XX-00-00-03-0

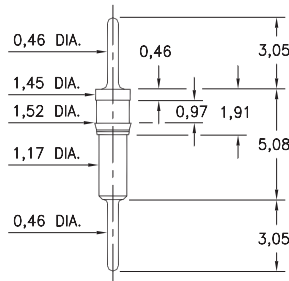
Press-fit in 0,86 mounting hole



### 9218

9218-0-00-XX-00-00-03-0

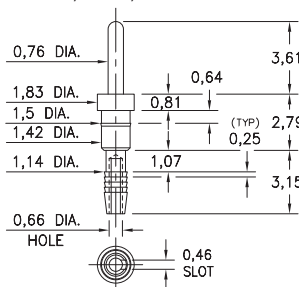
Press-fit in 1,45 mounting hole



### 5607

5607-0-01-XX-00-00-03-0

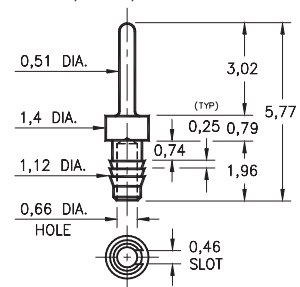
Compliant press-fit in 1,02 ± 0,08 plated hole. For 1,52 → 2,54 thick board



### 2617

2617-0-01-XX-00-00-03-0

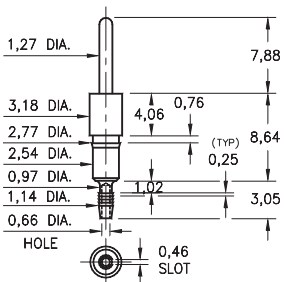
Compliant press-fit in 1,02 ± 0,08 plated hole. For 1,52 → 2,54 thick board



### 8995

8995-0-01-XX-00-00-03-0

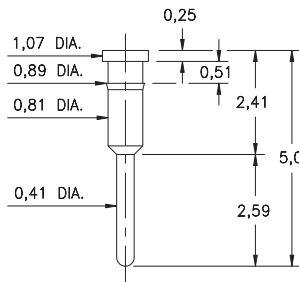
Compliant press-fit in 1,02 ± 0,08 plated hole. For 1,52 → 2,54 thick board



### 1933

1933-0-00-XX-00-00-03-0

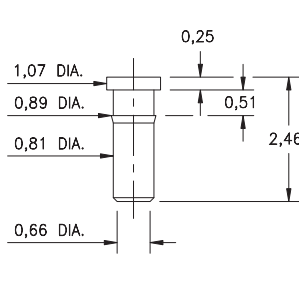
Press-fit in 0,86 mounting hole



### 1935

1935-0-00-XX-00-00-03-0

Press-fit in 0,86 mounting hole



#### SPECIFICATIONS:

**Pin Material:** Brass Alloy 360, 1/2 Hard  
(Except where noted)

**Dimensions:** Millimeters

**Tolerances On:** Lengths: ± 0,13  
Diameters: ± 0,051  
Angles: ± 2°



ORDER CODE: XXXX - X - 0X - XX - 00 - 00 - 03 - 0

BASIC PART #

SPECIFY PIN FINISH:

- 01 5,08µm TIN/LEAD OVER NICKEL
- ◆ 80 5,08µm TIN OVER NICKEL (RoHS)
- ◆ 15 0,25µm GOLD OVER NICKEL (RoHS)
- ◆ 21 0,51µm GOLD OVER NICKEL (RoHS)
- ◆ 34 1,27µm GOLD OVER NICKEL (RoHS)



## X-ON Electronics

Largest Supplier of Electrical and Electronic Components

*Click to view similar products for [Circuit Board Hardware - PCB category](#):*

*Click to view products by [Mill-Max manufacturer](#):*

Other Similar products are found below :

[8919-0-00-15-00-00-03-0](#) [0135-0-15-01-30-27-04-0](#) [5970-1-15-01-32-14-04-0](#) [0149-0-15-15-30-27-04-0](#) [MBI 1 BLUE](#) [7305-0-15-15-47-14-10-0](#) [MLN 150/1 BLACK](#) [8579-0-15-80-11-27-10-0](#) [8579-1-15-15-11-27-10-0](#) [8830-0-15-01-22-14-10-0](#) [8836-0-00-21-00-00-03-0](#) [PRUEF 2 RED](#) [9976-0-00-00-00-00-03-0](#) [PW1616](#) [1215-3-05-00-00-00-01-0](#) [1231](#) [1303-0-15-15-47-14-04-0](#) [1404-3](#) [1404-4](#) [1406-4](#) [1407-3](#) [1406-3](#) [1407-4](#) [1408-3](#) [1424-4](#) [1427-3](#) [1419-4](#) [1426-4](#) [1548-103](#) [1938-0-00-00-00-00-03-0](#) [1942-0-00-00-00-00-03-0](#) [2101-3-00-44-00-00-07-0](#) [2108-2-00-50-00-00-07-0](#) [2109-2-00-44-00-00-07-0](#) [2110-2-00-44-00-00-07-0](#) [2111-2-00-00-00-00-07-0](#) [2113-4-00-44-00-00-07-0](#) [2301-3-00-44-00-00-07-0](#) [2308-1-00-50-00-00-07-0](#) [2313-2-00-00-00-00-07-0](#) [2315-2-01-44-00-00-07-0](#) [2317-2-00-50-00-00-07-0](#) [2333-1-00-50-00-00-07-0](#) [9000-0-00-00-00-00-03-0](#) [2506-2-00-50-00-00-07-0](#) [2507-2-01-44-00-00-07-0](#) [2508-2-00-44-00-00-07-0](#) [2561-2-00-44-00-00-07-0](#) [9220](#) [9234-0-15-15-30-14-10-0](#)