

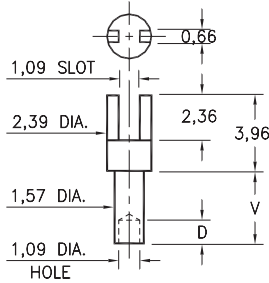
MALE PCB PINS

SOLDER TERMINALS SLOTTED

2315

2315-X-01-XX-00-00-07-0

Swage mount in 1,70 hole

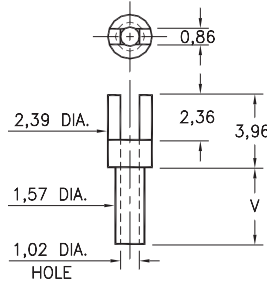


Basic Part Number	Board Thickness	Length V	Depth D
2315-1	0,79	1,14	1,02
2315-2	1,57	2,39	1,57
2315-3	2,39	3,18	1,57
2315-4	3,18	3,96	1,57

2302

2302-X-01-XX-00-00-07-0

Swage mount in 1,70 hole

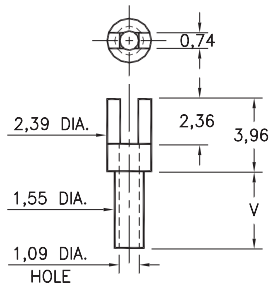


Basic Part Number	Board Thickness	Length V
2302-1	0,79	1,35
2302-2	1,57	2,13
2302-3	2,39	2,92
2302-4	3,18	3,73

2352

2352-X-01-XX-00-00-07-0

Swage mount in 1,70 hole

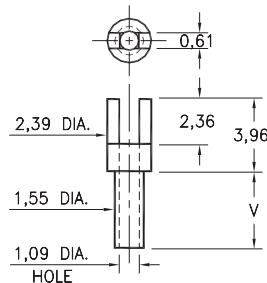


Basic Part Number	Board Thickness	Length V
2352-1	0,79	1,14
2352-2	1,57	2,39
2352-3	2,39	3,18
2352-4	3,18	3,96

2362

2362-X-01-XX-00-00-07-0

Swage mount in 1,70 hole

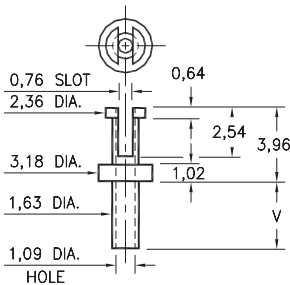


Basic Part Number	Board Thickness	Length V
2362-5	0,41	0,94
2362-1	0,79	1,35
2362-2	1,57	2,13
2362-3	2,39	2,92
2362-4	3,18	3,73

2507

2507-X-01-XX-00-00-07-0

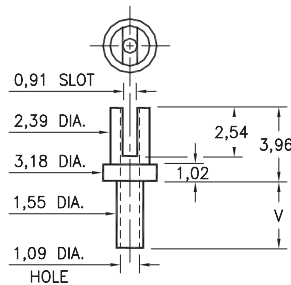
Swage mount in 1,70 hole



2526

2526-X-01-XX-00-00-07-0

Swage mount in 1,63 hole



Basic Part Number	Board Thickness	Length V
25XX-1	0,79	1,35
25XX-2	1,57	2,13
25XX-3	2,39	2,92
25XX-4	3,18	3,73

SPECIFICATIONS:

Pin Material: Brass Alloy 360, 1/2 Hard
(Swage pins are annealed)

Dimensions: Millimeters

Tolerances On: Lengths: $\pm 0,13$
Diameters: $\pm 0,051$
Angles: $\pm 2^\circ$



ORDER CODE: **XXXX - X - 01 - XX - 00 - 00 - 07 - 0**

BASIC PART #

SPECIFY PIN FINISH:

- 01 5,08 μ m TIN/LEAD OVER NICKEL
- ◆ 80 5,08 μ m TIN OVER NICKEL (RoHS)
- ◆ 44 7,62 μ m SILVER OVER COPPER (RoHS)
- 50 7,62 μ m ELECTRO-SOLDER
(60/40 SnPb)



X-ON Electronics

Largest Supplier of Electrical and Electronic Components

Click to view similar products for [Circuit Board Hardware - PCB category](#):

Click to view products by [Mill-Max manufacturer](#):

Other Similar products are found below :

[8919-0-00-15-00-00-03-0](#) [0135-0-15-01-30-27-04-0](#) [5970-1-15-01-32-14-04-0](#) [0149-0-15-15-30-27-04-0](#) [MBI 1 BLUE](#) [7305-0-15-15-47-14-10-0](#) [MLN 150/1 BLACK](#) [8579-0-15-80-11-27-10-0](#) [8579-1-15-15-11-27-10-0](#) [8830-0-15-01-22-14-10-0](#) [8836-0-00-21-00-00-03-0](#) [PRUEF 2 RED](#) [9976-0-00-00-00-00-03-0](#) [PW1616](#) [1215-3-05-00-00-00-01-0](#) [1231](#) [1303-0-15-15-47-14-04-0](#) [1404-3](#) [1404-4](#) [1406-4](#) [1407-3](#) [1406-3](#) [1407-4](#) [1408-3](#) [1424-4](#) [1427-3](#) [1419-4](#) [1426-4](#) [MPS 1 BLACK](#) [1548-103](#) [1938-0-00-00-00-00-03-0](#) [1942-0-00-00-00-00-03-0](#) [2101-3-00-44-00-00-07-0](#) [2108-2-00-50-00-00-07-0](#) [2109-2-00-44-00-00-07-0](#) [2110-2-00-44-00-00-07-0](#) [2111-2-00-00-00-00-07-0](#) [2113-4-00-44-00-00-07-0](#) [2301-3-00-44-00-00-07-0](#) [2308-1-00-50-00-00-07-0](#) [2313-2-00-00-00-00-07-0](#) [2315-2-01-44-00-00-07-0](#) [2317-2-00-50-00-00-07-0](#) [2333-1-00-50-00-00-07-0](#) [9000-0-00-00-00-00-03-0](#) [2506-2-00-50-00-00-07-0](#) [2507-2-01-44-00-00-07-0](#) [2508-2-00-44-00-00-07-0](#) [2561-2-00-44-00-00-07-0](#) [9220](#)