

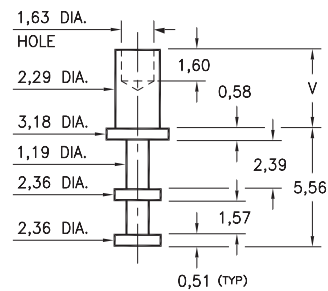
MALE PCB PINS

SOLDER TERMINAL TURRETS

2501

2501-X-00-XX-00-00-07-0

Swage mount in 2,39 hole

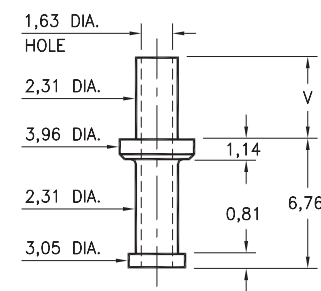


Basic Part Number	Board Thickness	Length V
2501-1	0,79	1,98
2501-2	1,57	2,77
2501-3	2,39	3,56
2501-4	3,18	4,34

2703

2703-X-00-XX-00-00-07-0

Swage mount in 2,39 hole

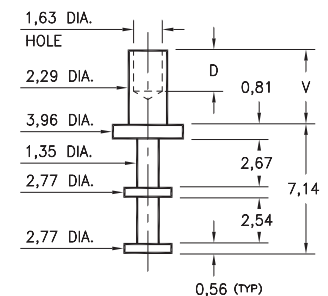


Basic Part Number	Board Thickness	Length V
2703-1	0,79	1,96
2703-2	1,57	2,72
2703-3	2,39	3,48
2703-4	3,18	4,24

2702

2702-X-00-XX-00-00-07-0

Swage mount in 2,39 hole

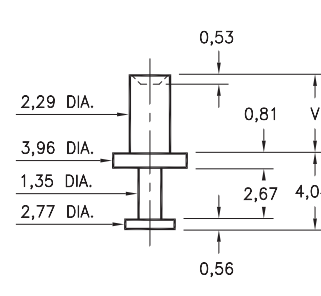


Basic Part Number	Board Thickness	Length V	Depth D
2702-1	0,79	1,91	1,60
2702-2	1,57	2,67	2,36
2702-3	2,39	3,43	2,36
2702-4	3,18	4,19	2,36

2710

2710-X-00-XX-00-00-07-0

Swage mount in 2,39 hole

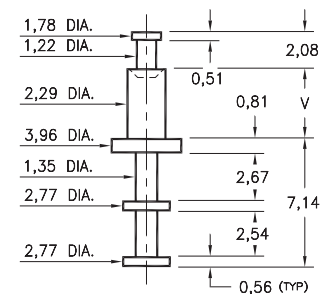


Basic Part Number	Board Thickness	Length V
2710-1	0,79	1,57
2710-2	1,57	2,39
2710-3	2,39	3,18
2710-4	3,18	3,96

2717

2717-X-00-XX-00-00-07-0

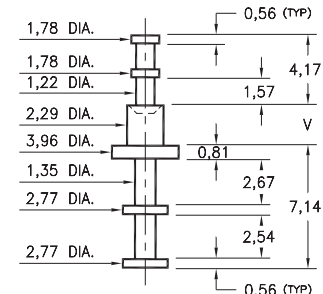
Swage mount in 2,39 hole



2713

2713-X-00-XX-00-00-07-0

Swage mount in 2,39 hole



Basic Part Number	Board Thickness	Length V
271X-1	0,79	1,57
271X-2	1,57	2,39
271X-3	2,39	3,18
271X-4	3,18	3,96

SPECIFICATIONS:

Pin Material: Brass Alloy 360, 1/2 Hard
(Swage pins are annealed)

Dimensions: Millimeters

Tolerances On: Lengths: $\pm 0,13$
Diameters: $\pm 0,051$
Angles: $\pm 2^\circ$



ORDER CODE: **XXXX - X - 00 - XX - 00 - 00 - 07 - 0**

BASIC PART #

SPECIFY PIN FINISH:

- 01 5,08μm TIN/LEAD OVER NICKEL
- ◆ 80 5,08μm TIN OVER NICKEL (RoHS)
- ◆ 44 7,62μm SILVER OVER COPPER (RoHS)
- 50 7,62μm ELECTRO-SOLDER (60/40 SnPb)



X-ON Electronics

Largest Supplier of Electrical and Electronic Components

Click to view similar products for [Circuit Board Hardware - PCB category](#):

Click to view products by [Mill-Max manufacturer](#):

Other Similar products are found below :

[8919-0-00-15-00-00-03-0](#) [0135-0-15-01-30-27-04-0](#) [5970-1-15-01-32-14-04-0](#) [0149-0-15-15-30-27-04-0](#) [MBI 1 BLUE](#) [7305-0-15-15-47-14-10-0](#) [MLN 150/1 BLACK](#) [8579-0-15-80-11-27-10-0](#) [8579-1-15-15-11-27-10-0](#) [8830-0-15-01-22-14-10-0](#) [8836-0-00-21-00-00-03-0](#) [PRUEF 2 RED](#) [9976-0-00-00-00-00-03-0](#) [PW1616](#) [1215-3-05-00-00-00-01-0](#) [1231](#) [1303-0-15-15-47-14-04-0](#) [1404-3](#) [1404-4](#) [1406-4](#) [1407-3](#) [1406-3](#) [1407-4](#) [1408-3](#) [1424-4](#) [1427-3](#) [1419-4](#) [1426-4](#) [MPS 1 BLACK](#) [1548-103](#) [1938-0-00-00-00-00-03-0](#) [1942-0-00-00-00-00-03-0](#) [2101-3-00-44-00-00-07-0](#) [2108-2-00-50-00-00-07-0](#) [2109-2-00-44-00-00-07-0](#) [2110-2-00-44-00-00-07-0](#) [2111-2-00-00-00-00-07-0](#) [2113-4-00-44-00-00-07-0](#) [2301-3-00-44-00-00-07-0](#) [2308-1-00-50-00-00-07-0](#) [2313-2-00-00-00-00-07-0](#) [2315-2-01-44-00-00-07-0](#) [2317-2-00-50-00-00-07-0](#) [2333-1-00-50-00-00-07-0](#) [9000-0-00-00-00-00-03-0](#) [2506-2-00-50-00-00-07-0](#) [2507-2-01-44-00-00-07-0](#) [2508-2-00-44-00-00-07-0](#) [2561-2-00-44-00-00-07-0](#) [9220](#)