

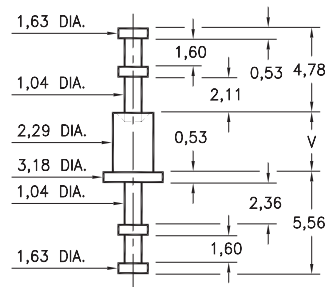
MALE PCB PINS

SOLDER TERMINAL TURRETS

2512

2512-X-00-XX-00-00-07-0

Swage mount in 2,39 hole

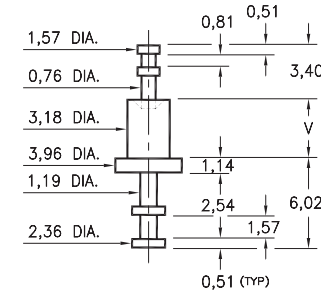


Basic Part Number	Board Thickness	Length V
2512-1	0,79	1,57
2512-2	1,57	2,39
2512-3	2,39	3,18
2512-4	3,18	3,96

2705

2705-X-00-XX-00-00-07-0

Swage mount in 3,28 hole

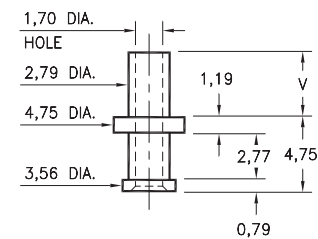


Basic Part Number	Board Thickness	Length V
2705-1	0,79	1,91
2705-2	1,57	2,67
2705-3	2,39	3,43
2705-4	3,18	4,19

2803

2803-X-00-XX-00-00-07-0

Swage mount in 2,87 hole

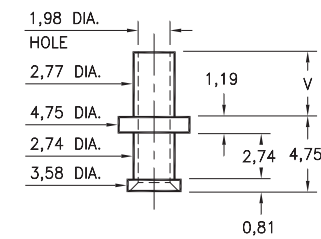


Basic Part Number	Board Thickness	Length V
2803-1	0,79	1,98
2803-2	1,57	2,77
2803-3	2,39	3,56
2803-4	3,18	4,34

2815

2815-X-00-XX-00-00-07-0

Swage mount in 2,87 hole

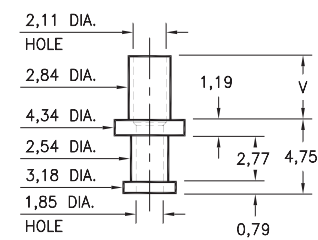


Basic Part Number	Board Thickness	Length V
2815-1	0,79	1,91
2815-2	1,57	2,67
2815-3	2,39	3,43
2815-4	3,18	4,19

2816

2816-X-00-XX-00-00-07-0

Swage mount in 2,95 hole

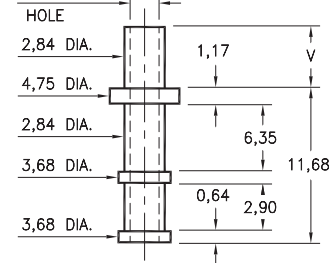


Basic Part Number	Board Thickness	Length V
2816-1	0,79	1,98
2816-2	1,57	2,77
2816-3	2,39	3,58
2816-4	3,18	4,37

2817

2817-X-00-XX-00-00-07-0

Swage mount in 2,95 hole



Basic Part Number	Board Thickness	Length V
2817-1	0,79	1,91
2817-2	1,57	2,67
2817-3	2,39	3,43
2817-4	3,18	4,19

SPECIFICATIONS:

Pin Material: Brass Alloy 360, 1/2 Hard
(Swage pins are annealed)

Dimensions: Millimeters

Tolerances On: Lengths: $\pm 0,13$
Diameters: $\pm 0,051$
Angles: $\pm 2^\circ$



ORDER CODE: **XXXX - X - 00 - XX - 00 - 00 - 07 - 0**

BASIC PART #

SPECIFY PIN FINISH:

- 01** 5,08 μ m TIN/LEAD OVER NICKEL
- 80** 5,08 μ m TIN OVER NICKEL (RoHS)
- 44** 7,62 μ m SILVER OVER COPPER (RoHS)
- 50** 7,62 μ m ELECTRO-SOLDER
(60/40 SnPb)



X-ON Electronics

Largest Supplier of Electrical and Electronic Components

Click to view similar products for [IC & Component Sockets](#) category:

Click to view products by [Mill-Max](#) manufacturer:

Other Similar products are found below :

[0066-3-17-15-30-14-02-0](#) [670](#) [672](#) [673](#) [694-13-640-00-672-000](#) [712-93-120-41-001000](#) [714-93-104-31-018000](#) [8059-4G1-LF](#) [807-22-001-10-001101](#) [807-22-001-10-006101](#) [807-22-001-30-011101](#) [807-22-001-30-012101](#) [807-22-001-30-013101](#) [807-22-001-30-014101](#) [8-1437531-4](#) [8150-6P10](#) [833-93-034-10-001000](#) [851-41-006-10-001000](#) [851-43-008-20-001000](#) [851-43-014-20-001000](#) [851-93-006-20-001000](#) [851-93-010-20-001000](#) [853-43-020-10-001000](#) [86.010.0053.0](#) [116-43-308-41-007000](#) [PX-68LCC](#) [121-13-318-41-001000](#) [121-13-320-41-001000](#) [121-13-308-41-001000](#) [123-43-314-41-801000](#) [123-43-420-41-001000](#) [123-87-320-41-001101](#) [122-13-316-41-001000](#) [123-13-624-41-001000](#) [123-43-306-41-001000](#) [12-3513-11](#) [123-91-320-41-001000](#) [126-43-310-41-002000](#) [AKSUN 37V-T](#) [1437503-9](#) [1437504-1](#) [146-44-308-41-013000](#) [APO-320-G-T](#) [146-43-308-41-012000](#) [160-10-308-00-001000](#) [160-40-320-00-001000](#) [214-99-306-01-670800](#) [232-1270-02-0602](#) [2-382761-4](#) [2-5331677-4](#)