

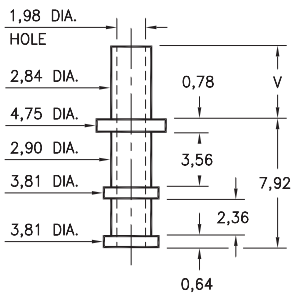
MALE PCB PINS

SOLDER TERMINAL TURRETS

2802

2802-X-00-XX-00-00-07-0

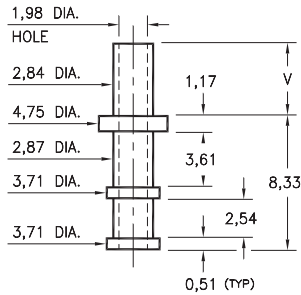
Swage mount in 3,0 hole



2804

2804-X-00-XX-00-00-07-0

Swage mount in 3,0 hole

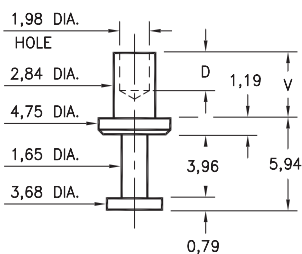


Basic Part Number	Board Thickness	Length V
280X-1	0,79	1,98
280X-2	1,57	2,77
280X-3	2,39	3,56
280X-4	3,18	4,34

2805

2805-X-00-XX-00-00-07-0

Swage mount in 2,95 hole

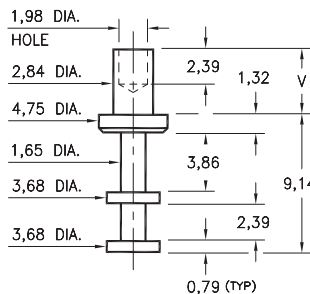


Basic Part Number	Board Thickness	Length V	Depth D
2805-1	0,79	1,88	1,73
2805-2	1,57	2,67	2,49
2805-3	2,39	3,43	2,49
2805-4	3,18	4,19	2,49

2801

2801-X-00-XX-00-00-07-0

Swage mount in 2,95 hole

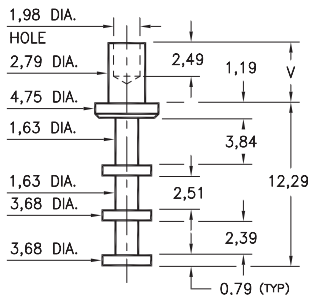


Basic Part Number	Board Thickness	Length V
2801-1	0,79	1,98
2801-2	1,57	2,77
2801-3	2,39	3,58
2801-4	3,18	4,37
2801-5	4,76	5,94

2806

2806-X-00-XX-00-00-07-0

Swage mount in 2,95 hole

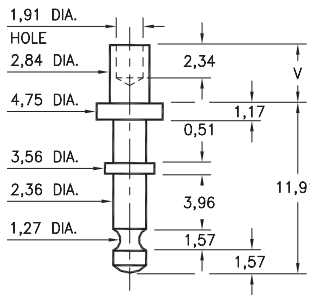


Basic Part Number	Board Thickness	Length V
2806-1	0,79	1,98
2806-2	1,57	2,77
2806-3	2,39	3,58
2806-4	3,18	4,37

2811

2811-X-00-XX-00-00-07-0

Swage mount in 2,95 hole



Basic Part Number	Board Thickness	Length V
2811-1	0,79	1,91
2811-2	1,57	2,67
2811-3	2,39	3,43
2811-4	3,18	4,19

SPECIFICATIONS:

Pin Material: Brass Alloy 360, 1/2 Hard
(Swage pins are annealed)

Dimensions: Millimeters

Tolerances On: Lengths: $\pm 0,13$
Diameters: $\pm 0,051$
Angles: $\pm 2^\circ$



ORDER CODE: XXXX - X - 00 - XX - 00 - 00 - 07 - 0

BASIC PART #

SPECIFY PIN FINISH:

- 01 5,08 μ m TIN/LEAD OVER NICKEL
- ◆ 80 5,08 μ m TIN OVER NICKEL (RoHS)
- ◆ 44 7,62 μ m SILVER OVER COPPER (RoHS)
- 50 7,62 μ m ELECTRO-SOLDER
(60/40 SnPb)



X-ON Electronics

Largest Supplier of Electrical and Electronic Components

Click to view similar products for [IC & Component Sockets](#) category:

Click to view products by [Mill-Max](#) manufacturer:

Other Similar products are found below :

[614-DG5](#) [670](#) [672](#) [673](#) [712-93-120-41-001000](#) [714-93-104-31-018000](#) [8-1437531-4](#) [8150-6P10](#) [835-43-014-10-001000](#) [851-41-006-10-001000](#) [851-43-008-20-001000](#) [851-43-014-20-001000](#) [851-93-006-20-001000](#) [851-93-010-20-001000](#) [853-43-020-10-001000](#) [86.010.0053.0](#) [116-43-308-41-007000](#) [121-13-318-41-001000](#) [121-13-320-41-001000](#) [121-13-308-41-001000](#) [123-43-314-41-801000](#) [123-43-420-41-001000](#) [122-13-316-41-001000](#) [123-13-624-41-001000](#) [123-43-306-41-001000](#) [12-3513-11](#) [123-91-320-41-001000](#) [126-43-310-41-002000](#) [AKSUN](#) [37V-T](#) [1437503-9](#) [1437504-1](#) [APA-640-G-P](#) [146-44-308-41-013000](#) [146-43-308-41-012000](#) [160-10-308-00-001000](#) [160-40-320-00-001000](#) [214-99-306-01-670800](#) [2-382761-4](#) [2-5331677-4](#) [2-640360-3](#) [2801-3-00-44-00-00-07-0](#) [940-44-052-17-400004](#) [299-83-314-11-001101](#) [1986000-2](#) [2103331641101000](#) [210-43-320-41-001000](#) [210-99-628-41-001000](#) [2-1437504-6](#) [2-1437515-5](#) [2-1437531-2](#)