

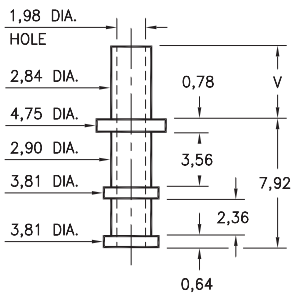
# MALE PCB PINS

## SOLDER TERMINAL TURRETS

### 2802

2802-X-00-XX-00-00-07-0

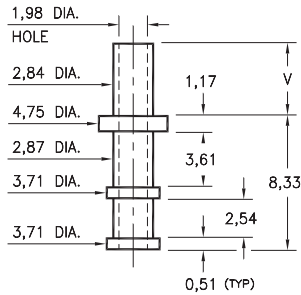
Swage mount in 3,0 hole



### 2804

2804-X-00-XX-00-00-07-0

Swage mount in 3,0 hole

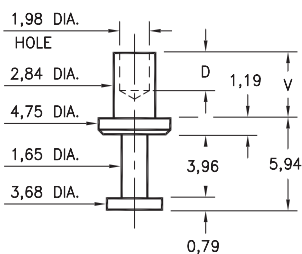


Basic Part Number	Board Thickness	Length V
280X-1	0,79	1,98
280X-2	1,57	2,77
280X-3	2,39	3,56
280X-4	3,18	4,34

### 2805

2805-X-00-XX-00-00-07-0

Swage mount in 2,95 hole

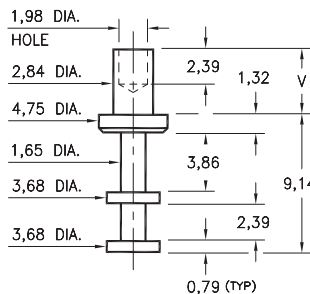


Basic Part Number	Board Thickness	Length V	Depth D
2805-1	0,79	1,88	1,73
2805-2	1,57	2,67	2,49
2805-3	2,39	3,43	2,49
2805-4	3,18	4,19	2,49

### 2801

2801-X-00-XX-00-00-07-0

Swage mount in 2,95 hole

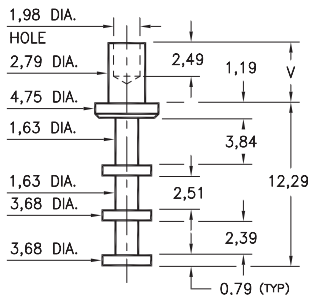


Basic Part Number	Board Thickness	Length V
2801-1	0,79	1,98
2801-2	1,57	2,77
2801-3	2,39	3,58
2801-4	3,18	4,37
2801-5	4,76	5,94

### 2806

2806-X-00-XX-00-00-07-0

Swage mount in 2,95 hole

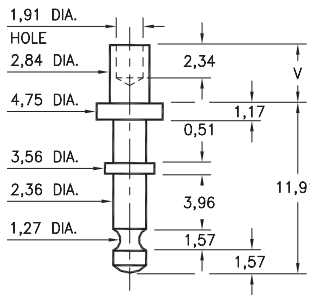


Basic Part Number	Board Thickness	Length V
2806-1	0,79	1,98
2806-2	1,57	2,77
2806-3	2,39	3,58
2806-4	3,18	4,37

### 2811

2811-X-00-XX-00-00-07-0

Swage mount in 2,95 hole



Basic Part Number	Board Thickness	Length V
2811-1	0,79	1,91
2811-2	1,57	2,67
2811-3	2,39	3,43
2811-4	3,18	4,19

#### SPECIFICATIONS:

**Pin Material:** Brass Alloy 360, 1/2 Hard  
(Swage pins are annealed)

**Dimensions:** Millimeters

**Tolerances On:** Lengths:  $\pm 0,13$   
Diameters:  $\pm 0,051$   
Angles:  $\pm 2^\circ$



ORDER CODE: XXXX - X - 00 - XX - 00 - 00 - 07 - 0

BASIC PART #

SPECIFY PIN FINISH:

- 01 5,08 $\mu$ m TIN/LEAD OVER NICKEL
- ◆ 80 5,08 $\mu$ m TIN OVER NICKEL (RoHS)
- ◆ 44 7,62 $\mu$ m SILVER OVER COPPER (RoHS)
- 50 7,62 $\mu$ m ELECTRO-SOLDER  
(60/40 SnPb)



## X-ON Electronics

Largest Supplier of Electrical and Electronic Components

*Click to view similar products for [Circuit Board Hardware - PCB category](#):*

*Click to view products by [Mill-Max manufacturer](#):*

Other Similar products are found below :

[8919-0-00-15-00-00-03-0](#) [0135-0-15-01-30-27-04-0](#) [5970-1-15-01-32-14-04-0](#) [0149-0-15-15-30-27-04-0](#) [MBI 1 BLUE](#) [7305-0-15-15-47-14-10-0](#) [MLN 150/1 BLACK](#) [8579-0-15-80-11-27-10-0](#) [8579-1-15-15-11-27-10-0](#) [8830-0-15-01-22-14-10-0](#) [8836-0-00-21-00-00-03-0](#) [PRUEF 2 RED](#) [9976-0-00-00-00-00-03-0](#) [PW1616](#) [1215-3-05-00-00-00-01-0](#) [1231](#) [1303-0-15-15-47-14-04-0](#) [1404-3](#) [1404-4](#) [1406-4](#) [1407-3](#) [1406-3](#) [1407-4](#) [1408-3](#) [1424-4](#) [1427-3](#) [1419-4](#) [1426-4](#) [1548-103](#) [1938-0-00-00-00-00-03-0](#) [1942-0-00-00-00-00-03-0](#) [2101-3-00-44-00-00-07-0](#) [2108-2-00-50-00-00-07-0](#) [2109-2-00-44-00-00-07-0](#) [2110-2-00-44-00-00-07-0](#) [2111-2-00-00-00-00-07-0](#) [2113-4-00-44-00-00-07-0](#) [2301-3-00-44-00-00-07-0](#) [2308-1-00-50-00-00-07-0](#) [2313-2-00-00-00-00-07-0](#) [2315-2-01-44-00-00-07-0](#) [2333-1-00-50-00-00-07-0](#) [9000-0-00-00-00-00-03-0](#) [2506-2-00-50-00-00-07-0](#) [2507-2-01-44-00-00-07-0](#) [2508-2-00-44-00-00-07-0](#) [2561-2-00-44-00-00-07-0](#) [9220](#) [9234-0-15-15-30-14-10-0](#) [LAS S G BLACK](#)