

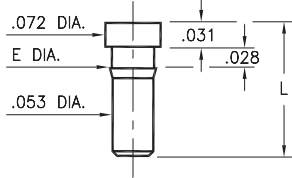
# MALE PCB PINS

## PRINTED CIRCUIT PINS

### 0259/0286/1941

XXXX-0-00-XX-00-00-03-0

Press-fit in .057/.059 mounting hole



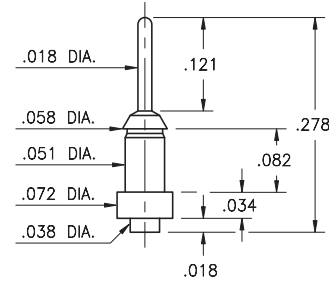
Basic Part Number	Length L	Barb Dia. E	Mounting Hole
0259-0	.173	.062	.059
0286-0	.115	.060	.057
*1941-0	.169	.058	.056

\* Flat face Target contact

### 2956-0

2956-0-00-XX-00-00-03-0

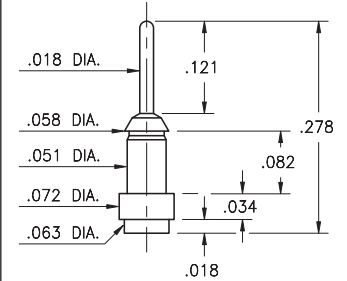
Surface mount



### 2956-1

2956-1-00-XX-00-00-03-0

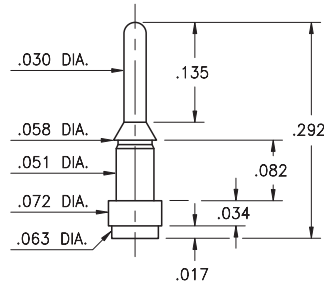
Surface mount



### 4956-1

4956-1-00-XX-00-00-33-0

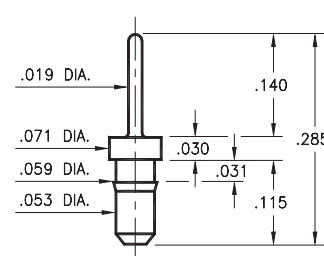
Surface mount



### 8876

8876-0-00-XX-00-00-03-0

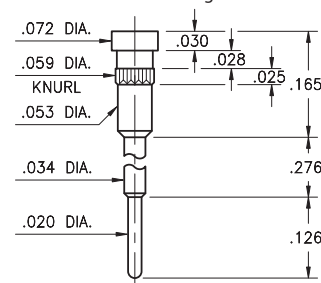
Press-fit in .057 mounting hole



### 1938

1938-0-00-XX-00-00-03-0

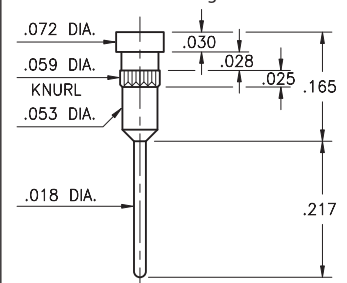
Flat face Target contact, solder Tail  
Press-fit in .057 mounting hole



### 1940

1940-0-00-XX-00-00-03-0

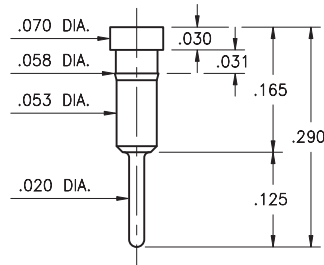
Flat face Target contact, solder Tail  
Press-fit in .057 mounting hole



### 1942

1942-0-00-XX-00-00-03-0

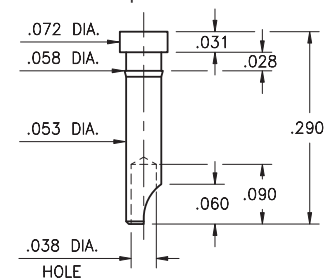
Flat face Target contact, solder Tail  
Press-fit in .056 mounting hole



### 3024

3024-0-01-XX-00-00-03-0

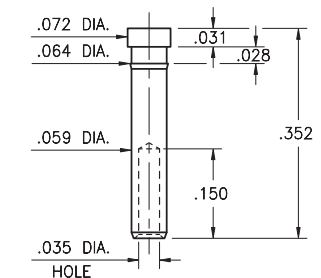
Flat face Target contact, solder cup  
Press-fit in .056 mounting hole  
For wire sizes up to 22 AWG



### 3000

3000-0-00-XX-00-00-03-0

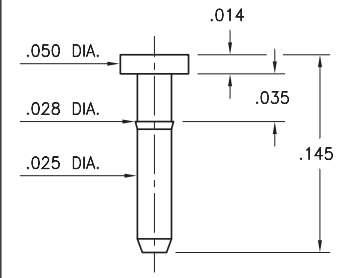
Flat face Target contact, wire termination  
Press-fit in .061 mounting hole. Accepts  
wire sizes 24 AWG Max. / 28 AWG Min.



### 6430

6430-0-00-XX-00-00-03-0

Press-fit in .025 mounting hole



#### SPECIFICATIONS:

**Pin Material:** Brass Alloy 360, 1/2 Hard  
( Except swage pins which are annealed )

**Dimensions:** Inches

**Tolerances On:** Lengths: ± .005  
Diameters: ± .002  
Angles: ± 2°



ORDER CODE: XXXX - X - 0X - XX - 00 - 00 - XX - 0

BASIC PART #

SPECIFY PIN FINISH:

- 01 200 μ" TIN/LEAD OVER NICKEL
- ◆ 80 200 μ" TIN OVER NICKEL (RoHS)
- ◆ 15 10 μ" GOLD OVER NICKEL (RoHS)
- ◆ 21 20 μ" GOLD OVER NICKEL (RoHS)
- ◆ 34 50 μ" GOLD OVER NICKEL (RoHS)



## X-ON Electronics

Largest Supplier of Electrical and Electronic Components

*Click to view similar products for [Circuit Board Hardware - PCB category](#):*

*Click to view products by [Mill-Max manufacturer](#):*

Other Similar products are found below :

[8919-0-00-15-00-00-03-0](#) [0135-0-15-01-30-27-04-0](#) [5970-1-15-01-32-14-04-0](#) [0149-0-15-15-30-27-04-0](#) [MBI 1 BLUE](#) [7305-0-15-15-47-14-10-0](#) [MLN 150/1 BLACK](#) [8579-0-15-80-11-27-10-0](#) [8579-1-15-15-11-27-10-0](#) [8830-0-15-01-22-14-10-0](#) [8836-0-00-21-00-00-03-0](#) [PRUEF 2 RED](#) [9976-0-00-00-00-00-03-0](#) [PW1616](#) [1215-3-05-00-00-00-01-0](#) [1231](#) [1303-0-15-15-47-14-04-0](#) [1404-3](#) [1404-4](#) [1406-4](#) [1407-3](#) [1406-3](#) [1407-4](#) [1408-3](#) [1424-4](#) [1427-3](#) [1419-4](#) [1426-4](#) [MPS 1 BLACK](#) [1548-103](#) [1938-0-00-00-00-00-03-0](#) [1942-0-00-00-00-00-03-0](#) [2101-3-00-44-00-00-07-0](#) [2108-2-00-50-00-00-07-0](#) [2109-2-00-44-00-00-07-0](#) [2110-2-00-44-00-00-07-0](#) [2111-2-00-00-00-00-07-0](#) [2113-4-00-44-00-00-07-0](#) [2301-3-00-44-00-00-07-0](#) [2308-1-00-50-00-00-07-0](#) [2313-2-00-00-00-00-07-0](#) [2315-2-01-44-00-00-07-0](#) [2317-2-00-50-00-00-07-0](#) [2333-1-00-50-00-00-07-0](#) [9000-0-00-00-00-00-03-0](#) [2506-2-00-50-00-00-07-0](#) [2507-2-01-44-00-00-07-0](#) [2508-2-00-44-00-00-07-0](#) [2561-2-00-44-00-00-07-0](#) [9220](#)