

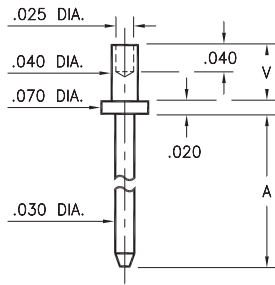
MALE PCB PINS

PRINTED CIRCUIT PINS

3110/3111

311X-X-00-XX-00-00-08-0

Swage mount in .043 hole

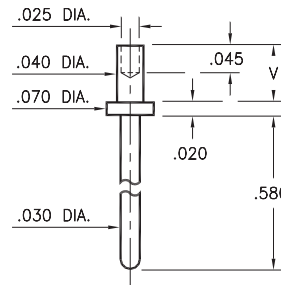


Basic Part Number	Board Thickness	Length A	Length V
3110-1	.031	.150	.051
3110-2	.062	.150	.082
3110-3	.094	.150	.113
3111-1	.031	.300	.051
3111-2	.062	.300	.082
3111-3	.094	.300	.113

3150

3150-X-00-XX-00-00-08-0

Swage mount in .043 mounting hole



Basic Part Number	Board Thickness	Length V
3150-1	.031	.051
3150-2	.062	.082

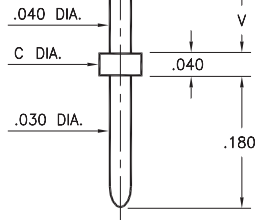
3136/3137

313X-X-00-XX-00-00-08-0

Solder mount in .043 mounting hole

3137-1 is available on 16mm wide carrier tape: 580 parts per 13" reel.

See page 224.1 for Tape & Reel details



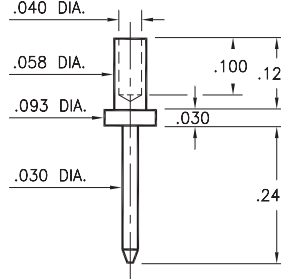
Basic Part Number	Board Thickness	Length V	Flange Dia. C
3136-1	.062	.082	
3136-2	.094	.110	.078
3136-3	.125	.145	
3137-1	.062	.082	
3137-2	.094	.110	.062
3137-3	.125	.145	
3137-4	.156	.185	

3148

3148-3-00-XX-00-00-08-0

Swage mount in .062 hole

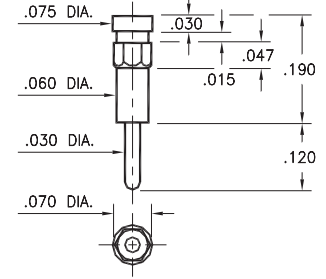
For a .094 thick board



8815

8815-0-00-XX-00-00-03-0

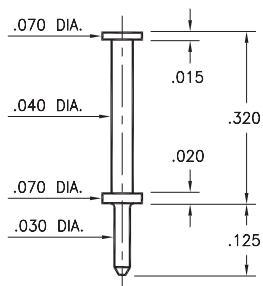
Hex press-fit in .066 plated through-hole



6821

6821-0-00-XX-00-00-08-0

Turret terminal pin

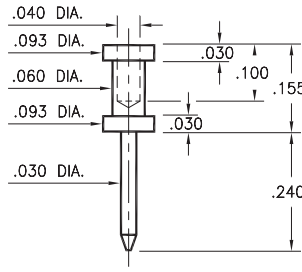


3132

3132-0-00-XX-00-00-08-0

Wire crimp termination, Annealed

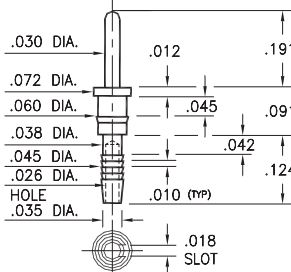
Accepts wire sizes 22 AWG Max. / 24 AWG Min.



5601

5601-0-01-XX-00-00-03-0

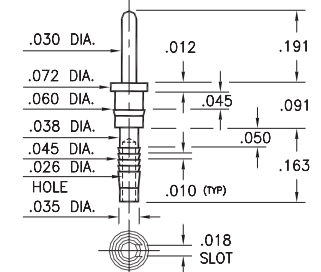
Compliant press-fit in .040 ± .003 plated through-hole. For .060" → .100" thick board



5602

5602-0-01-XX-00-00-03-0

Compliant press-fit in .040 ± .003 plated through-hole. For .090" → .130" thick board



SPECIFICATIONS:

Pin Material: Brass Alloy 360, 1/2 Hard
(Except swage pins which are annealed)

Dimensions: Inches

Tolerances On: Lengths: ±.005
Diameters: ±.002
Angles: ±2°



ORDER CODE: XXXX - X - 0X - XX - 00 - 00 - XX - 0

BASIC PART #

SPECIFY PIN FINISH:

- 01 200 μ" TIN/LEAD OVER NICKEL
- ◆ 80 200 μ" TIN OVER NICKEL (RoHS)
- ◆ 15 10 μ" GOLD OVER NICKEL (RoHS)
- ◆ 21 20 μ" GOLD OVER NICKEL (RoHS)
- ◆ 34 50 μ" GOLD OVER NICKEL (RoHS)



X-ON Electronics

Largest Supplier of Electrical and Electronic Components

Click to view similar products for [IC & Component Sockets](#) category:

Click to view products by [Mill-Max](#) manufacturer:

Other Similar products are found below :

[714-43-102-31-012000](#) [0066-3-17-15-30-14-02-0](#) [0134-0-15-15-32-27-04-0](#) [614-DG5](#) [6527-0-00-15-00-00-03-0](#) [670](#) [672](#) [673](#) [712-93-120-41-001000](#) [714-93-104-31-018000](#) [8059-4G1-LF](#) [807-22-001-10-001101](#) [807-22-001-10-003101](#) [807-22-001-10-004101](#) [807-22-001-10-006101](#) [807-22-001-30-011101](#) [807-22-001-30-012101](#) [807-22-001-30-013101](#) [807-22-001-30-014101](#) [8-1437531-4](#) [8150-6P10](#) [833-93-034-10-001000](#) [835-43-014-10-001000](#) [851-41-006-10-001000](#) [851-43-008-20-001000](#) [851-43-014-20-001000](#) [851-93-006-20-001000](#) [851-93-010-20-001000](#) [852-10-026-10-001000](#) [853-43-020-10-001000](#) [86.010.0053.0](#) [116-43-306-41-003000](#) [116-43-308-41-007000](#) [116-87-308-41-007101](#) [PX-68LCC](#) [PX-84LCC](#) [121-13-318-41-001000](#) [121-13-320-41-001000](#) [121-13-308-41-001000](#) [123-43-314-41-801000](#) [123-43-420-41-001000](#) [123-43-636-41-001000](#) [123-87-320-41-001101](#) [122-13-316-41-001000](#) [123-13-624-41-001000](#) [123-43-306-41-001000](#) [123-43-322-41-801000](#) [123-43-428-41-001000](#) [123-43-624-41-001000](#) [12-3513-11](#)