

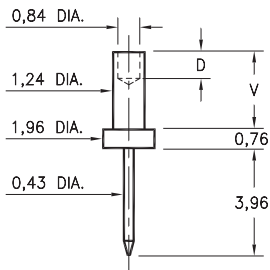
MALE PCB PINS

PRINTED CIRCUIT PINS

3116

3116-X-00-XX-00-00-08-0

Swage mount in 1,32 hole

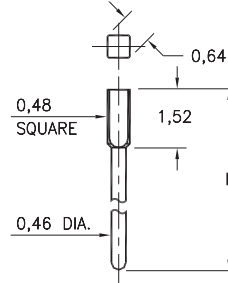


Basic Part Number	Board Thickness	Length V	Depth D
3116-1	0,79	1,30	0,89
3116-2	1,57	2,08	1,57
3116-3	2,39	2,87	1,57
3116-4	3,18	3,68	1,57

5435

5435-X-05-XX-00-00-03-0

Square press-fit in 0,56 plated through-hole

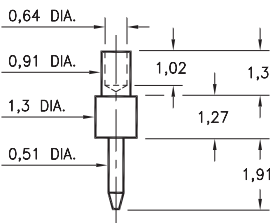


Basic Part Number	Length L
5435-0	7,70
5435-1	5,08
5435-2	10,49

3135

3135-1-00-XX-00-00-08-0

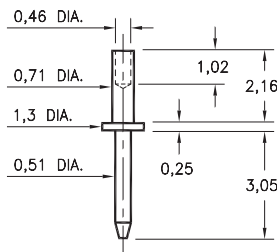
Swage mount in 1,02 hole
For 0,79 thick board



3210

3210-2-00-XX-00-00-08-0

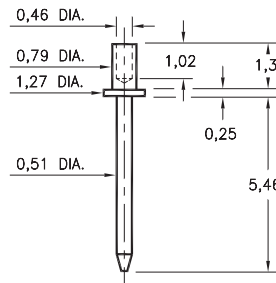
Swage mount in 0,79 hole
For 1,57 thick board



3129

3129-1-00-XX-00-00-08-0

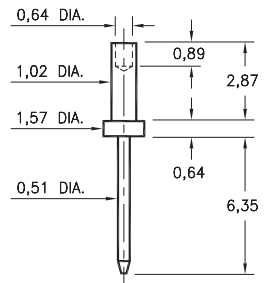
Swage mount in 0,89 hole
For 0,79 thick board



3147

3147-3-00-XX-00-00-08-0

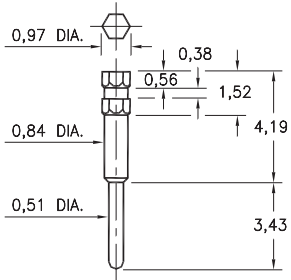
Swage mount in 1,09 hole
For 2,39 thick board



4366

4366-0-00-XX-00-00-03-0

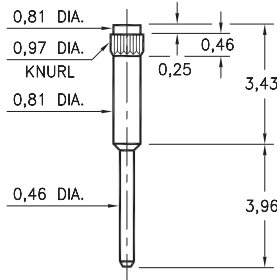
Hex press-fit in 0,86 plated through-hole



1267

1267-0-00-XX-00-00-03-0

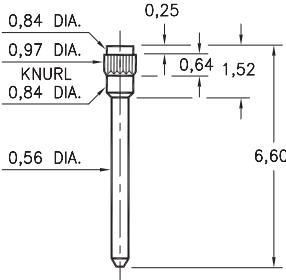
Press-fit in 0,89 mounting hole



7827

7827-0-00-XX-00-00-03-0

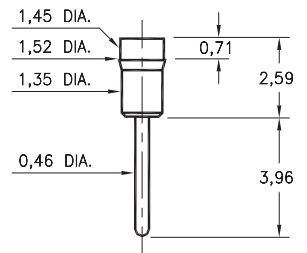
Press-fit in 0,89 mounting hole



1130

1130-0-00-XX-00-00-03-0

Press-fit in 1,45 mounting hole
Pin material is Phosphor Bronze 544 (B2)



SPECIFICATIONS:

Pin Material: Brass Alloy 360, 1/2 Hard
(Except where noted)

Dimensions: Millimeters

Tolerances On: Lengths: $\pm 0,13$
Diameters: $\pm 0,051$
Angles: $\pm 2^\circ$



ORDER CODE: XXXX - X - 0X - XX - 00 - 00 - XX - 0

BASIC PART #

SPECIFY PIN FINISH:

- 01 5,08 μ m TIN/LEAD OVER NICKEL
- ◆ 80 5,08 μ m TIN OVER NICKEL (RoHS)
- ◆ 15 0,25 μ m GOLD OVER NICKEL (RoHS)
- ◆ 21 0,51 μ m GOLD OVER NICKEL (RoHS)
- ◆ 34 1,27 μ m GOLD OVER NICKEL (RoHS)



X-ON Electronics

Largest Supplier of Electrical and Electronic Components

Click to view similar products for [IC & Component Sockets](#) category:

Click to view products by [Mill-Max](#) manufacturer:

Other Similar products are found below :

[0066-3-17-15-30-14-02-0](#) [670](#) [672](#) [673](#) [694-13-640-00-672-000](#) [712-93-120-41-001000](#) [714-93-104-31-018000](#) [8059-4G1-LF](#) [807-22-001-10-001101](#) [807-22-001-10-006101](#) [807-22-001-30-011101](#) [807-22-001-30-012101](#) [807-22-001-30-013101](#) [807-22-001-30-014101](#) [8-1437531-4](#) [8150-6P10](#) [833-93-034-10-001000](#) [851-41-006-10-001000](#) [851-43-008-20-001000](#) [851-43-014-20-001000](#) [851-93-006-20-001000](#) [851-93-010-20-001000](#) [853-43-020-10-001000](#) [86.010.0053.0](#) [116-43-308-41-007000](#) [PX-68LCC](#) [121-13-318-41-001000](#) [121-13-320-41-001000](#) [121-13-308-41-001000](#) [123-43-314-41-801000](#) [123-43-420-41-001000](#) [123-87-320-41-001101](#) [122-13-316-41-001000](#) [123-13-624-41-001000](#) [123-43-306-41-001000](#) [12-3513-11](#) [123-91-320-41-001000](#) [126-43-310-41-002000](#) [AKSUN 37V-T](#) [1437503-9](#) [1437504-1](#) [146-44-308-41-013000](#) [APO-320-G-T](#) [146-43-308-41-012000](#) [160-10-308-00-001000](#) [160-40-320-00-001000](#) [214-99-306-01-670800](#) [232-1270-02-0602](#) [2-382761-4](#) [2-5331677-4](#)