

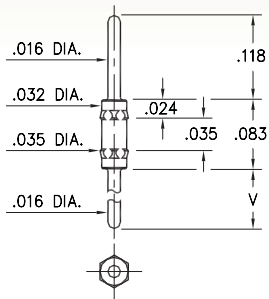
# MALE PCB PINS

## PRINTED CIRCUIT PINS

### 4006

4006-X-00-XX-00-00-03-0

Hex press-fit in .034 mounting hole

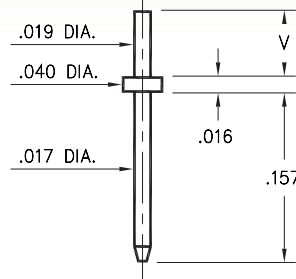


Basic Part Number	Length V
4006-0	.118
4006-1	.188
4006-2	.288

### 3121

3121-X-00-XX-00-00-08-0

Solder mount in .023 mounting hole  
Material is annealed.

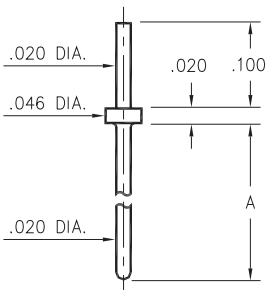


Basic Part Number	Substrate Thickness	Length V
3121-1	.025	.061
3121-2	.040	.075

### 3128

3128-X-00-XX-00-00-08-0

Solder mount in .024 min. mounting hole

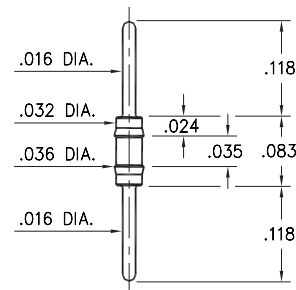


Basic Part Number	Length A
3128-1	.250
3128-2	.425
3128-3	.525
3128-4	.550
3128-5	.930

### 3006

3006-0-00-XX-00-00-03-0

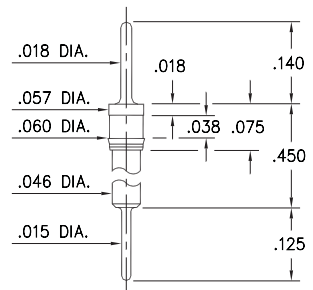
Press-fit in .034 mounting hole



### 8885

8885-0-00-XX-00-00-03-0

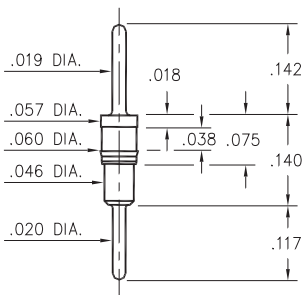
Press-fit in .057 mounting hole



### 6218

6218-0-00-XX-00-00-03-0

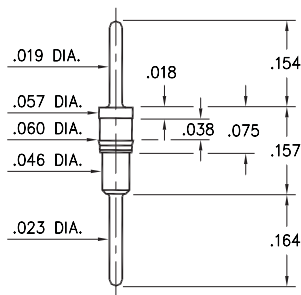
Press-fit in .057 mounting hole



### 5012

5012-0-00-XX-00-00-03-0

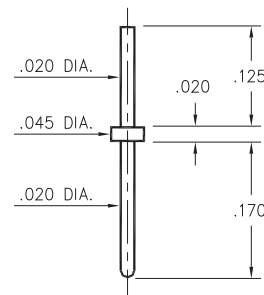
Press-fit in .057 mounting hole



### 9081

9081-0-00-XX-00-00-08-0

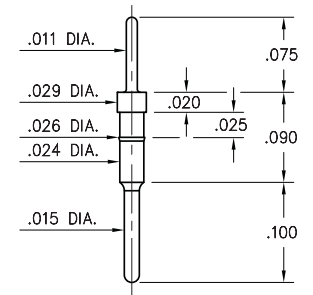
Solder mount in .024 mounting hole



### 3039

3039-0-00-15-00-00-03-0

Press-fit in .025 mounting hole



#### SPECIFICATIONS:

**Pin Material:** Brass Alloy 360, 1/2 Hard  
(Except where noted)

**Dimensions:** Inches

**Tolerances On:** Lengths:  $\pm .005$   
Diameters:  $\pm .002$   
Angles:  $\pm 2^\circ$



ORDER CODE: XXXX - X - 00 - XX - 00 - 00 - XX - 0

BASIC PART #

SPECIFY PIN FINISH:

- 01 200  $\mu$ m TIN/LEAD OVER NICKEL
- ◆ 80 200  $\mu$ m TIN OVER NICKEL (RoHS)
- ◆ 15 10  $\mu$ m GOLD OVER NICKEL (RoHS)
- ◆ 21 20  $\mu$ m GOLD OVER NICKEL (RoHS)
- ◆ 34 50  $\mu$ m GOLD OVER NICKEL (RoHS)



## X-ON Electronics

Largest Supplier of Electrical and Electronic Components

*Click to view similar products for [IC & Component Sockets](#) category:*

*Click to view products by [Mill-Max](#) manufacturer:*

Other Similar products are found below :

[0066-3-17-15-30-14-02-0](#) [670](#) [672](#) [673](#) [694-13-640-00-672-000](#) [712-93-120-41-001000](#) [714-93-104-31-018000](#) [8059-4G1-LF](#) [807-22-001-10-001101](#) [807-22-001-10-006101](#) [807-22-001-30-011101](#) [807-22-001-30-012101](#) [807-22-001-30-013101](#) [807-22-001-30-014101](#) [8-1437531-4](#) [8150-6P10](#) [833-93-034-10-001000](#) [851-41-006-10-001000](#) [851-43-008-20-001000](#) [851-43-014-20-001000](#) [851-93-006-20-001000](#) [851-93-010-20-001000](#) [853-43-020-10-001000](#) [86.010.0053.0](#) [116-43-308-41-007000](#) [PX-68LCC](#) [121-13-318-41-001000](#) [121-13-320-41-001000](#) [121-13-308-41-001000](#) [123-43-314-41-801000](#) [123-43-420-41-001000](#) [123-87-320-41-001101](#) [122-13-316-41-001000](#) [123-13-624-41-001000](#) [123-43-306-41-001000](#) [12-3513-11](#) [123-91-320-41-001000](#) [126-43-310-41-002000](#) [AKSUN 37V-T](#) [1437503-9](#) [1437504-1](#) [146-44-308-41-013000](#) [APO-320-G-T](#) [146-43-308-41-012000](#) [160-10-308-00-001000](#) [160-40-320-00-001000](#) [214-99-306-01-670800](#) [232-1270-02-0602](#) [2-382761-4](#) [2-5331677-4](#)