

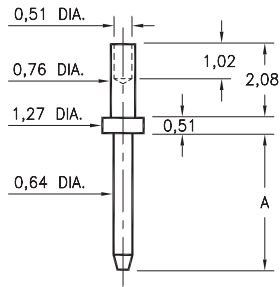
MALE PCB PINS

PRINTED CIRCUIT PINS

3120

3120-X-00-XX-00-00-08-0

Swage mount in 0,86 hole

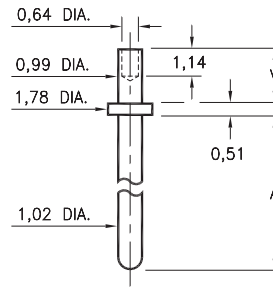


Basic Part Number	Pin Length A
3120-1	5,21
3120-2	6,35

3122 ⇔ 3153

31XX-X-00-XX-00-00-08-0

Swage mount in 1,09 hole



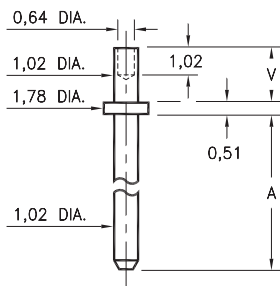
Basic Part Number	Pin Length A
3153-X	4,57
3141-X	5,84
3122-X	7,11
3149-X	9,65
3123-X	14,73
3140-X	19,81
3124-X	22,35

-X-	Board Thickness	Length V
1	0,79	1,3
2	1,57	2,08

3101 ⇔ 3106

310X-X-00-XX-00-00-08-0

Swage mount in 1,09 hole



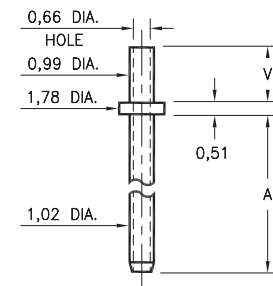
Basic Part Number	Pin Length A
3101-X	3,81
3102-X	4,78
3103-X	7,62
3104-X	12,7
3105-X	19,05
3106-X	25,40

-X-	Board Thickness	Length V
1	0,79	1,30
2	1,57	2,08
3	2,39	2,87

3221 ⇔ 3223

322X-0-00-XX-00-00-08-0

Swage mount in 1,09 hole



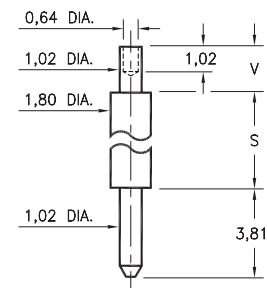
Basic Part Number	Pin Length A
3221-X	2,54
3222-X	3,81
3223-X	7,62

-X-	Board Thickness	Length V
1	0,79	1,30
2	1,57	2,08
3	2,39	2,87

3125/3126

312X-X-00-XX-00-00-08-0

Swage mount in 1,09 hole



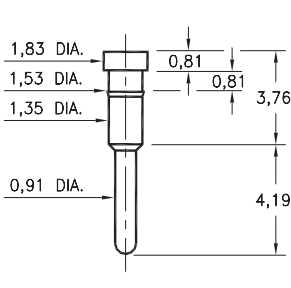
Basic Part Number	Pin Length S
3125-X	4,32
3126-X	10,67

-X-	Board Thickness	Length V
1	0,79	1,30
2	1,57	2,08
3	2,39	2,87

0995

0995-0-00-XX-00-00-03-0

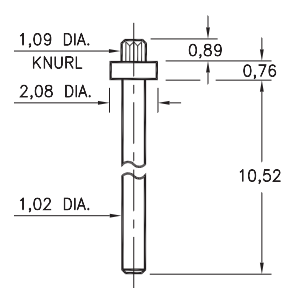
Press-fit in 1,45 mounting hole



4526

4526-0-00-XX-00-00-03-0

Press-fit in 1,02 mounting hole



SPECIFICATIONS:

Pin Material: Brass Alloy 360, 1/2 Hard
(Except swage pins which are annealed)

Dimensions: Millimeters

Tolerances On: Lengths: ± 0,13
Diameters: ± 0,051
Angles: ± 2°



ORDER CODE: XXXX - X - 0X - XX - 00 - 00 - XX - 0

BASIC PART #

SPECIFY PIN FINISH:

- 01 5,08µm TIN/LEAD OVER NICKEL
- ◆ 80 5,08µm TIN OVER NICKEL (RoHS)
- ◆ 15 0,25µm GOLD OVER NICKEL (RoHS)
- ◆ 21 0,51µm GOLD OVER NICKEL (RoHS)
- ◆ 34 1,27µm GOLD OVER NICKEL (RoHS)



X-ON Electronics

Largest Supplier of Electrical and Electronic Components

Click to view similar products for [IC & Component Sockets](#) category:

Click to view products by [Mill-Max](#) manufacturer:

Other Similar products are found below :

[614-DG5](#) [670](#) [672](#) [673](#) [712-93-120-41-001000](#) [714-93-104-31-018000](#) [8-1437531-4](#) [8150-6P10](#) [835-43-014-10-001000](#) [851-41-006-10-001000](#) [851-43-008-20-001000](#) [851-43-014-20-001000](#) [851-93-006-20-001000](#) [851-93-010-20-001000](#) [853-43-020-10-001000](#) [86.010.0053.0](#) [116-43-308-41-007000](#) [121-13-318-41-001000](#) [121-13-320-41-001000](#) [121-13-308-41-001000](#) [123-43-314-41-801000](#) [123-43-420-41-001000](#) [122-13-316-41-001000](#) [123-13-624-41-001000](#) [123-43-306-41-001000](#) [12-3513-11](#) [123-91-320-41-001000](#) [126-43-310-41-002000](#) [AKSUN](#) [37V-T](#) [1437503-9](#) [1437504-1](#) [APA-640-G-P](#) [146-44-308-41-013000](#) [146-43-308-41-012000](#) [160-10-308-00-001000](#) [160-40-320-00-001000](#) [214-99-306-01-670800](#) [2-382761-4](#) [2-5331677-4](#) [2-640360-3](#) [2801-3-00-44-00-00-07-0](#) [940-44-052-17-400004](#) [299-83-314-11-001101](#) [1986000-2](#) [2103331641101000](#) [210-43-320-41-001000](#) [210-99-628-41-001000](#) [2-1437504-6](#) [2-1437515-5](#) [2-1437531-2](#)