

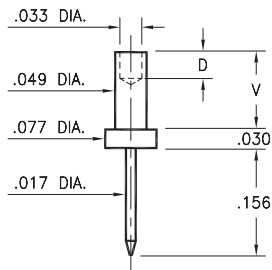
# MALE PCB PINS

## PRINTED CIRCUIT PINS

### 3116

3116-X-00-XX-00-00-08-0

Swage mount in .052 hole

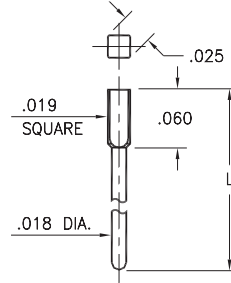


Basic Part Number	Board Thickness	Length V	Depth D
3116-1	.031	.051	.035
3116-2	.062	.082	.062
3116-3	.094	.113	.062
3116-4	.125	.145	.062

### X435

X435-X-05-XX-00-00-03-0

Square press-fit in .022 plated through-hole

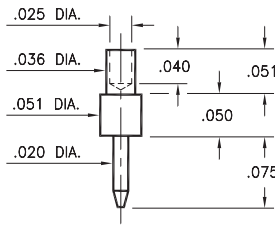


Basic Part Number	Length L
5435-0	.303
5435-1	.200
5435-2	.413
6435-0	.280

### 3135

3135-1-00-XX-00-00-08-0

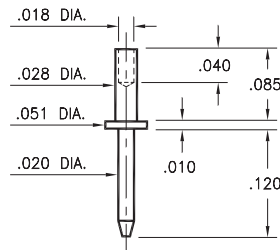
Swage mount in .040 hole  
For .031 thick board



### 3210

3210-2-00-XX-00-00-08-0

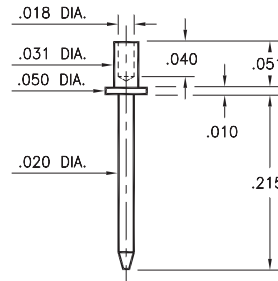
Swage mount in .031 hole  
For .062 thick board



### 3129

3129-1-00-XX-00-00-08-0

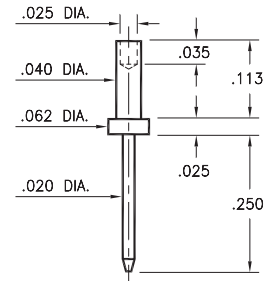
Swage mount in .035 hole  
For .031 thick board



### 3147

3147-3-00-XX-00-00-08-0

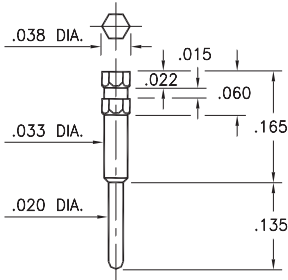
Swage mount in .043 hole  
For .094 thick board



### 4366

4366-0-00-XX-00-00-03-0

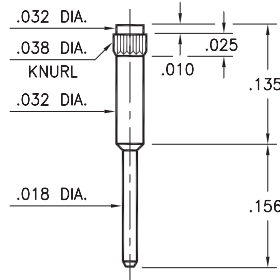
Hex press-fit in .034 plated through-hole



### 1267

1267-0-00-XX-00-00-03-0

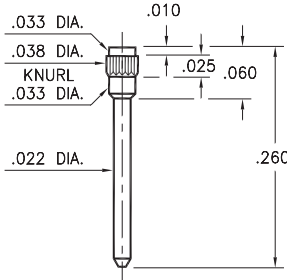
Press-fit in .035 mounting hole



### 7827

7827-0-00-XX-00-00-03-0

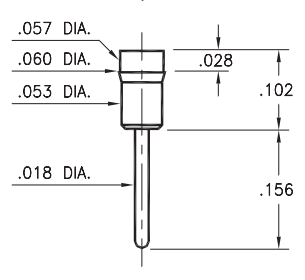
Press-fit in .035 mounting hole



### 1130

1130-0-00-XX-00-00-03-0

Press-fit in .057 mounting hole  
Pin material is Phosphor Bronze 544 (B2)



#### SPECIFICATIONS:

**Pin Material:** Brass Alloy 360, 1/2 Hard  
(Except where noted)

**Dimensions:** Inches

**Tolerances On:** Lengths: ±.005  
Diameters: ±.002  
Angles: ±2°



**ORDER CODE:** XXXX - X - 0X - XX - 00 - 00 - XX - 0

**BASIC PART #**

**SPECIFY PIN FINISH:**

- 01 200 μ" TIN/LEAD OVER NICKEL
- ◆ 80 200 μ" TIN OVER NICKEL (RoHS)
- ◆ 15 10 μ" GOLD OVER NICKEL (RoHS)
- ◆ 21 20 μ" GOLD OVER NICKEL (RoHS)
- ◆ 34 50 μ" GOLD OVER NICKEL (RoHS)



## X-ON Electronics

Largest Supplier of Electrical and Electronic Components

*Click to view similar products for [Circuit Board Hardware - PCB category](#):*

*Click to view products by [Mill-Max manufacturer](#):*

Other Similar products are found below :

[8919-0-00-15-00-00-03-0](#) [0132-0-15-01-30-27-04-0](#) [0135-0-15-01-30-27-04-0](#) [5970-1-15-01-32-14-04-0](#) [0132-0-15-15-30-27-04-0](#) [0135-0-15-15-30-27-04-0](#) [0149-0-15-15-30-27-04-0](#) [MBI 1 BLUE](#) [7305-0-15-15-47-14-10-0](#) [MKU 1 BLACK](#) [MLN 150/1 BLACK](#) [8579-0-15-80-11-27-10-0](#) [8579-1-15-15-11-27-10-0](#) [8637-0-15-15-21-14-10-0](#) [8830-0-15-01-22-14-10-0](#) [8836-0-00-21-00-00-03-0](#) [PRUEF 2 RED](#) [9976-0-00-00-00-00-03-0](#) [1178-0-01-80-00-00-03-0](#) [PW1616](#) [1215-3-05-00-00-00-01-0](#) [1303-0-15-15-47-14-04-0](#) [1404-3](#) [1404-4](#) [1406-4](#) [1407-3](#) [1406-3](#) [1407-4](#) [1408-3](#) [1424-4](#) [1426-3](#) [1427-3](#) [1427-4](#) [1428-3](#) [1419-4](#) [1424-3](#) [1426-4](#) [1428-4](#) [MPS 1 BLACK](#) [1520150-1](#) [1548-103](#) [1801-0-15-15-30-27-04-0](#) [1938-0-00-00-00-00-03-0](#) [1942-0-00-00-00-00-03-0](#) [2101-3-00-44-00-00-07-0](#) [2104-2-01-44-00-00-07-0](#) [2108-2-00-50-00-00-07-0](#) [2108-3-00-44-00-00-07-0](#) [2109-2-00-44-00-00-07-0](#) [2110-2-00-44-00-00-07-0](#)