

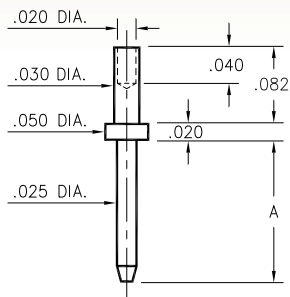
# MALE PCB PINS

## PRINTED CIRCUIT PINS

### 3120

3120-X-00-XX-00-00-08-0

Swage mount in .034 hole

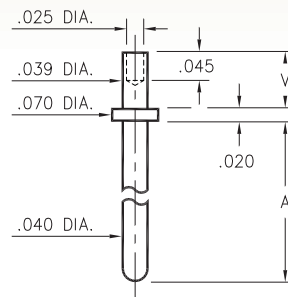


Basic Part Number	Pin Length A
3120-1	.205
3120-2	.250

### 3122⇔3153

31XX-X-00-XX-00-00-08-0

Swage mount in .043 hole



Basic Part Number	Pin Length A
3153-X	.180
3141-X	.230
3122-X	.280
3149-X	.380
3123-X	.580
3140-X	.780
3124-X	.880

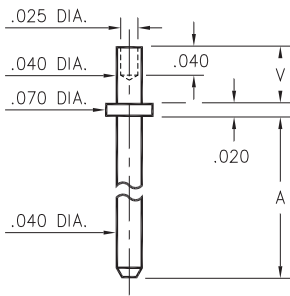
  

-X-	Board Thickness	Length V
1	.031	.051
2	.062	.082

### 3101⇔3106

310X-X-00-XX-00-00-08-0

Swage mount in .043 hole



Basic Part Number	Pin Length A
3101-X	.150
3102-X	.188
3103-X	.300
3104-X	.500
3105-X	.750
3106-X	1.000

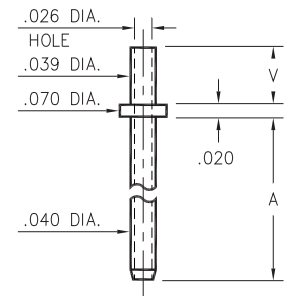
  

-X-	Board Thickness	Length V
1	.031	.051
2	.062	.082
3	.094	.113

### 3221⇔3223

322X-0-00-XX-00-00-08-0

Swage mount in .043 hole



Basic Part Number	Pin Length A
3221-X	.100
3222-X	.150
3223-X	.300

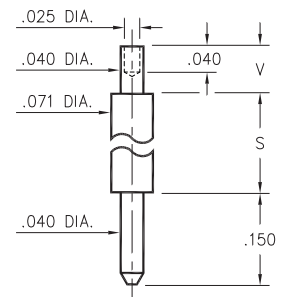
  

-X-	Board Thickness	Length V
1	.031	.051
2	.062	.082
3	.094	.113

### 3125/3126

312X-X-00-XX-00-00-08-0

Swage mount in .043 hole



Basic Part Number	Pin Length S
3125-X	.170
3126-X	.420

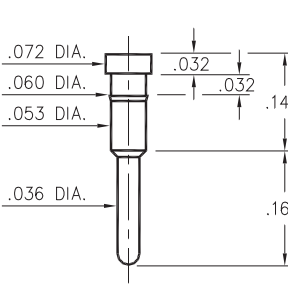
  

-X-	Board Thickness	Length V
1	.031	.051
2	.062	.082
3	.094	.113

### 0995

0995-0-00-XX-00-00-03-0

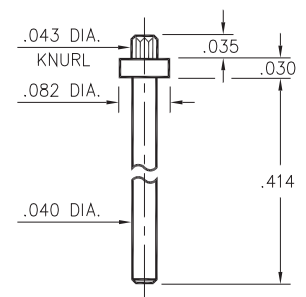
Press-fit in .057 mounting hole



### 4526

4526-0-00-XX-00-00-03-0

Press-fit in .040 mounting hole



#### SPECIFICATIONS:

**Pin Material:** Brass Alloy 360, 1/2 Hard  
( Except swage pins which are annealed )

**Dimensions:** Inches

**Tolerances On:** Lengths: ±.005  
Diameters: ±.002  
Angles: ± 2°



ORDER CODE: XXXX - X - 0X - XX - 00 - 00 - XX - 0

BASIC PART #

SPECIFY PIN FINISH:

- 01 200 μ" TIN/LEAD OVER NICKEL
- ◆ 80 200 μ" TIN OVER NICKEL (RoHS)
- ◆ 15 10 μ" GOLD OVER NICKEL (RoHS)
- ◆ 21 20 μ" GOLD OVER NICKEL (RoHS)
- ◆ 34 50 μ" GOLD OVER NICKEL (RoHS)



## X-ON Electronics

Largest Supplier of Electrical and Electronic Components

*Click to view similar products for [IC & Component Sockets](#) category:*

*Click to view products by [Mill-Max](#) manufacturer:*

Other Similar products are found below :

[0066-3-17-15-30-14-02-0](#) [670](#) [672](#) [673](#) [694-13-640-00-672-000](#) [712-93-120-41-001000](#) [714-93-104-31-018000](#) [8059-4G1-LF](#) [807-22-001-10-001101](#) [807-22-001-10-006101](#) [807-22-001-30-011101](#) [807-22-001-30-012101](#) [807-22-001-30-013101](#) [807-22-001-30-014101](#) [8-1437531-4](#) [8150-6P10](#) [833-93-034-10-001000](#) [851-41-006-10-001000](#) [851-43-008-20-001000](#) [851-43-014-20-001000](#) [851-93-006-20-001000](#) [851-93-010-20-001000](#) [853-43-020-10-001000](#) [86.010.0053.0](#) [116-43-308-41-007000](#) [PX-68LCC](#) [121-13-318-41-001000](#) [121-13-320-41-001000](#) [121-13-308-41-001000](#) [123-43-314-41-801000](#) [123-43-420-41-001000](#) [123-87-320-41-001101](#) [122-13-316-41-001000](#) [123-13-624-41-001000](#) [123-43-306-41-001000](#) [12-3513-11](#) [123-91-320-41-001000](#) [126-43-310-41-002000](#) [AKSUN 37V-T](#) [1437503-9](#) [1437504-1](#) [146-44-308-41-013000](#) [APO-320-G-T](#) [146-43-308-41-012000](#) [160-10-308-00-001000](#) [160-40-320-00-001000](#) [214-99-306-01-670800](#) [232-1270-02-0602](#) [2-382761-4](#) [2-5331677-4](#)