

MAXIMUM SOLUTIONS

Right Angle Pins from Mill-Max



Mill-Max is pleased to introduce a new series of discrete right angle pins. The 37XX-0 pins are available in four different diameters and are suitable for plugging into receptacles and/or soldering into printed circuit boards.

The four standard diameters available in the [37XX-0 series](#) are .020", .025", .030" and .040" (0,51mm, 0,63mm, 0,76mm, 1,02mm). These sizes are useful in satisfying a range of requirements for strength, pitch, board hole size and current carrying capacity. The 37XX series is ideal for any situation where a right angle connection is required. They can be soldered on to a daughter card and plugged into receptacles or connectors on a mother board for perpendicular board mating. They can also be combined with right angle receptacles or connectors to mate boards in parallel (daisy chaining). These brass pins are precision-machined and bent and are closely monitored to produce pins with consistent bends each time. The tips of the pins have a full radius shape making them easy to plug into board holes or receptacles. The standard plating option is 10 micro inches gold over nickel. As always, other plating options are available upon request.

For more information, please visit: www.mill-max.com/PR651.

(1/15-- PR651)

Mill-Max Mfg. Corp. • 190 Pine Hollow Road, Oyster Bay, NY 11771
516-922-6000 • Fax: 516-922-9253 • www.mill-max.com

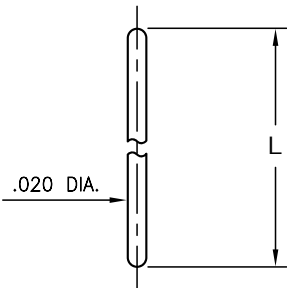


MALE PCB PINS

STRAIGHT AND RIGHT ANGLE PINS

3320

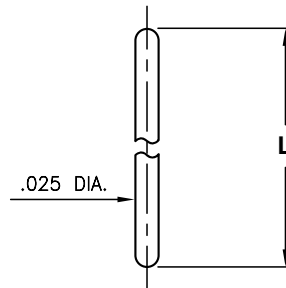
3320-X-00-XX-00-00-03-0



Basic Part Number	Length L
3320-0	.250
3320-1	.500

3325

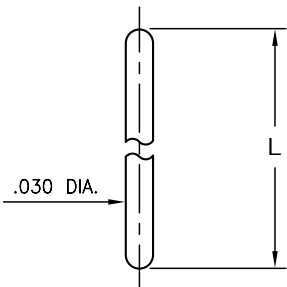
3325-X-00-XX-00-00-03-0



Basic Part Number	Length L
3325-0	.250
3325-1	.500
3325-2	.750

3330

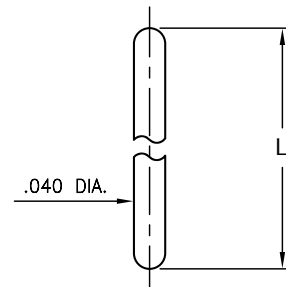
3330-X-00-XX-00-00-03-0



Basic Part Number	Length L
3330-0	.250
3330-1	.500
3330-2	.750

3340

3340-X-00-XX-00-00-03-0

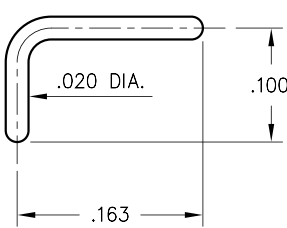


Basic Part Number	Length L
3340-0	.250
3340-1	.500
3340-2	.750

3720

3720-0-14-XX-00-00-03-0

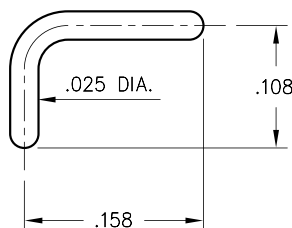
Right Angle Bent Pin



3725

3725-0-14-XX-00-00-03-0

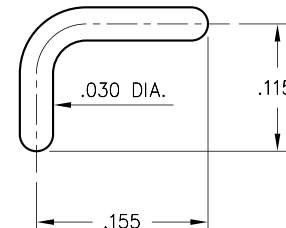
Right Angle Bent Pin



3730

3730-0-14-XX-00-00-03-0

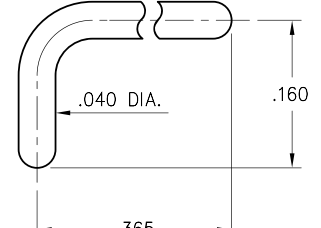
Right Angle Bent Pin



3740

3740-0-14-XX-00-00-03-0

Right Angle Bent Pin



SPECIFICATIONS:

Pin Material: Brass Alloy 360, 1/2 Hard
(Except where noted)

Dimensions: Inches

Tolerances On: Lengths: $\pm .005$
Diameters: $\pm .002$
Angles: $\pm 2^\circ$



ORDER CODE: 3XXX - X - 00 - XX - 00 - 00 - 03 - 0

BASIC PART #

SPECIFY PIN FINISH:

- ◆ 80 200 μ " TIN OVER NICKEL (RoHS)
- ◆ 15 10 μ " GOLD OVER NICKEL (RoHS)



X-ON Electronics

Largest Supplier of Electrical and Electronic Components

Click to view similar products for [IC & Component Sockets](#) category:

Click to view products by [Mill-Max](#) manufacturer:

Other Similar products are found below :

[0066-3-17-15-30-14-02-0](#) [670](#) [672](#) [673](#) [694-13-640-00-672-000](#) [712-93-120-41-001000](#) [714-93-104-31-018000](#) [8059-4G1-LF](#) [807-22-001-10-001101](#) [807-22-001-10-006101](#) [807-22-001-30-011101](#) [807-22-001-30-012101](#) [807-22-001-30-013101](#) [807-22-001-30-014101](#) [8-1437531-4](#) [8150-6P10](#) [833-93-034-10-001000](#) [851-41-006-10-001000](#) [851-43-008-20-001000](#) [851-43-014-20-001000](#) [851-93-006-20-001000](#) [851-93-010-20-001000](#) [853-43-020-10-001000](#) [86.010.0053.0](#) [116-43-308-41-007000](#) [PX-68LCC](#) [121-13-318-41-001000](#) [121-13-320-41-001000](#) [121-13-308-41-001000](#) [123-43-314-41-801000](#) [123-43-420-41-001000](#) [123-87-320-41-001101](#) [122-13-316-41-001000](#) [123-13-624-41-001000](#) [123-43-306-41-001000](#) [12-3513-11](#) [123-91-320-41-001000](#) [126-43-310-41-002000](#) [AKSUN 37V-T](#) [1437503-9](#) [1437504-1](#) [146-44-308-41-013000](#) [APO-320-G-T](#) [146-43-308-41-012000](#) [160-10-308-00-001000](#) [160-40-320-00-001000](#) [214-99-306-01-670800](#) [232-1270-02-0602](#) [2-382761-4](#) [2-5331677-4](#)