

INTERCONNECTS

SERIES 334 • 2,54 GRID INTERCONNECT HEADERS • SINGLE ROW STRIPS

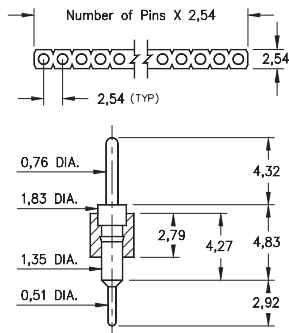


FIG. 1

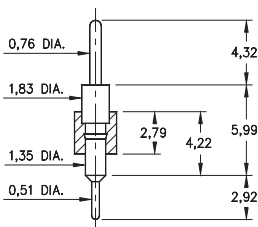


FIG. 2

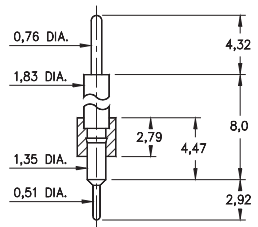


FIG. 3

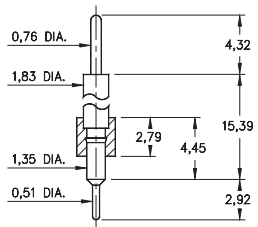


FIG. 4

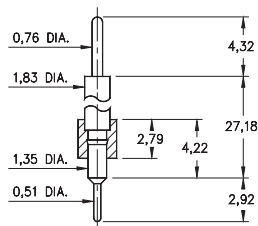


FIG. 5







- Series 334 interconnect header strips are available in 5 lengths:

334...020 uses pin #3402 (L = 4,83)
 334...010 uses pin #3401 (L = 5,99)
 334...050 uses pin #3405 (L = 8,0)
 334...000 uses pin #3400 (L = 15,39)
 334...100 uses pin #3410 (L = 27,18)
 See page 215 for details

- Strips come with 0,51 pluggable soldertails at one end and 0,76 tails at the other
- Insulators are high temperature thermoplastic, suitable for all soldering operations



ORDERING INFORMATION

| | Series 334...020 | 0,51 / 0,76 Dia. Solder Tails | | |
|--|--|-------------------------------|--|--|
| FIG. 1 | 334-XX-1 | -00-020000 | | |
| | Specify number of pins | 01-64 | | |
| FIG. 2 | 334-XX-1 | -00-010000 | | |
| | Specify number of pins | 01-64 | | |
| FIG. 3 | 334-XX-1 | -00-050000 | | |
| | Specify number of pins | 01-64 | | |
| FIG. 4 | 334-XX-1 | -00-000000 | | |
| | Specify number of pins | 01-64 | | |
| FIG. 5 | 334-XX-1 | -00-100000 | | |
| | Specify number of pins | 01-64 | | |
|    | | | | |
| SPECIFY PLATING CODE XX= | 10  | 90 | 40  | |
| Pin Plating  | 0,25µm Au | 5,08µm Sn/Pb | 5,08µm Sn | |

X-ON Electronics

Largest Supplier of Electrical and Electronic Components

Click to view similar products for [Headers & Wire Housings](#) category:

Click to view products by [Mill-Max](#) manufacturer:

Other Similar products are found below :

[892-18-020-10-001101](#) [58102-G61-06LF](#) [582553-1](#) [0009485154](#) [009176003701906](#) [0050291907](#) [LY20-4P-DT1-P1E-BR](#) [02.125.8002.8](#)
[609-3404](#) [61062-3](#) [622-0430](#) [622-3653LF](#) [63453-116](#) [636-1030](#) [636-1427](#) [636-3427](#) [636-4007](#) [641938-9](#) [641991-4](#) [644827-2](#) [65817-010LF](#)
[65817-015LF](#) [65863-015LF](#) [66207-023LF](#) [67095-007LF](#) [67601157](#) [68648-049](#) [70.362.1628.0](#) [70-4210](#) [70-4226B](#) [70-4853B](#) [707-5020](#) [707-5028](#) [71.350.2428.0](#) [71918-208LF](#) [71961-016LF](#) [733-134](#) [733-162](#) [754199-000](#) [760-3052](#) [787-8014-00](#) [79531-3000](#) [FCN-360C032-B](#) [FCN-367T-T012/H](#) [FCN-723D010/2](#) [80.063.4001.1](#) [800-90-001-10-001000](#) [800-90-010-10-002000](#) [801-43-002-10-013000](#) [801-43-006-10-002000](#)