

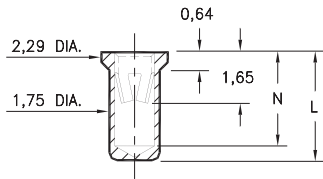
PIN RECEPTACLES

FOR 0,94 - 1,09 DIAMETER PINS

0331/9353

X3XX-0-15-XX-18-XX-10-0

Solder mount in 1,80 min. mounting hole
Also available on 24mm wide carrier tape:
1,000 parts per 330mm reel
Order as: X3XX-0-57-XX-18-XX-10-0

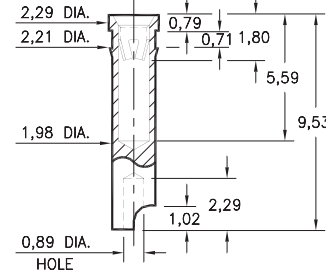


Basic Part Number	Length L	Depth N
0331-0	3,81	3,23
9353-0	4,32	3,73

7405

7405-0-18-XX-18-XX-10-0

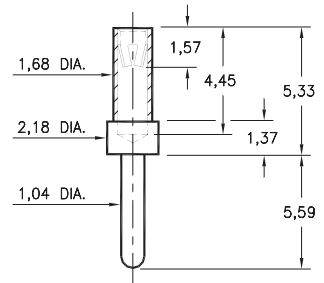
Press-fit in 2,13 mounting hole
Accepts wire sizes up to 0,64 dia.



3450

3450-0-15-XX-18-XX-04-0

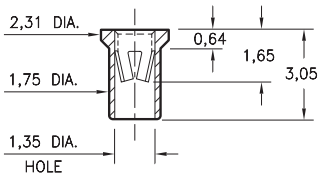
Solder mount in 1,09 min. mounting hole



7406

7406-0-15-XX-18-XX-10-0

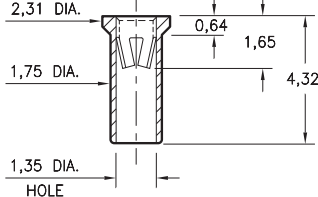
Solder mount in 1,80 min. mounting hole
Also available on 16mm wide carrier tape:
2,200 parts per 330mm reel
Order as: 7406-0-57-XX-18-XX-10-0



9354

9354-0-15-XX-18-XX-10-0

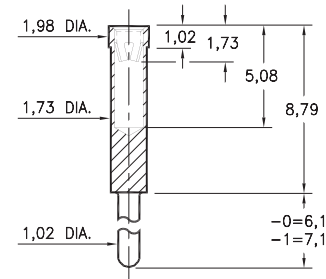
Solder mount in 1,80 min. mounting hole
Also available on 12mm wide carrier tape:
1,400 parts per 330mm reel
Order as: 9354-0-57-XX-18-XX-10-0



0319

0319-X-15-XX-18-XX-04-0

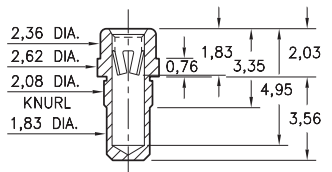
Solder mount in 1,07 min. mounting hole



9357

9357-0-15-XX-18-XX-10-0

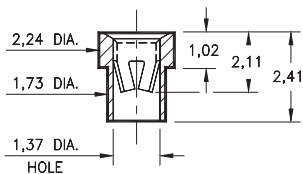
Press-fit in 1,98 mounting hole



3520

3520-0-15-XX-18-XX-10-0

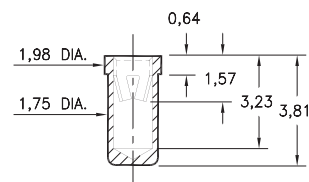
Solder mount in 1,78 min. mounting hole



8331

8331-0-15-XX-18-XX-10-0

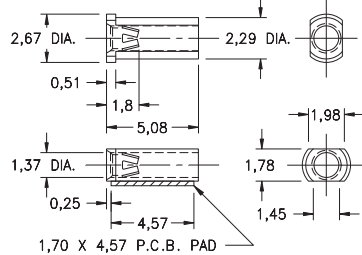
Solder mount in 1,80 min. mounting hole
Also available on 16mm wide carrier tape:
1,900 parts per 330mm reel
Order as: 8331-0-57-XX-18-XX-10-0



6628

6628-0-18-XX-18-XX-10-0

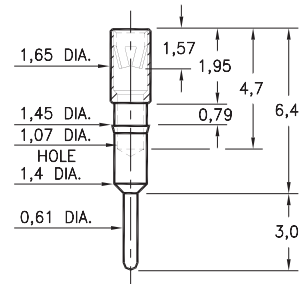
Surface mount
Also available on 12mm wide carrier tape:
3,700 parts per 330mm reel
Order as: 6628-0-58-XX-18-XX-10-0



1313

1313-0-15-XX-18-XX-04-0

Press-fit in 1,42 mounting hole



SPECIFICATIONS:

Shell Material: Brass Alloy 360, 1/2 Hard

Contact Material: Beryllium Copper Alloy 172, HT

Dimensions: Millimeters

Tolerances On: Lengths: ± 0,13

Diameters: ± 0,051

Angles: ± 2°



ORDER CODE: XXXX - X - XX - 18 - XX - XX - 0

BASIC PART #

SPECIFY SHELL FINISH:

01 5,08µm TIN/LEAD OVER NICKEL

◆ 80 5,08µm TIN OVER NICKEL (RoHS)

◆ 15 0,25µm GOLD OVER NICKEL (RoHS)

SPECIFY CONTACT FINISH:

01 5,08µm TIN/LEAD OVER NICKEL

◆ 80 5,08µm TIN OVER NICKEL (RoHS)

◆ 27 0,76µm GOLD OVER NICKEL (RoHS)

SELECT CONTACT:

#18 CONTACT (DATA ON PAGE 257)

(For alternate contact choices, see group L on page 248)



X-ON Electronics

Largest Supplier of Electrical and Electronic Components

Click to view similar products for [Circuit Board Hardware - PCB category](#):

Click to view products by [Mill-Max manufacturer](#):

Other Similar products are found below :

[8919-0-00-15-00-00-03-0](#) [0135-0-15-01-30-27-04-0](#) [5970-1-15-01-32-14-04-0](#) [0149-0-15-15-30-27-04-0](#) [MBI 1 BLUE](#) [7305-0-15-15-47-14-10-0](#) [MLN 150/1 BLACK](#) [8579-0-15-80-11-27-10-0](#) [8579-1-15-15-11-27-10-0](#) [8830-0-15-01-22-14-10-0](#) [8836-0-00-21-00-00-03-0](#) [PRUEF 1 RED](#) [PRUEF 2 RED](#) [9976-0-00-00-00-00-03-0](#) [PW1616](#) [1215-3-05-00-00-00-01-0](#) [1231](#) [1303-0-15-15-47-14-04-0](#) [1404-3](#) [1404-4](#) [1406-4](#) [1407-3](#) [1406-3](#) [1407-4](#) [1408-3](#) [1424-4](#) [1427-3](#) [1419-4](#) [1426-4](#) [MPS 1 BLACK](#) [1548-103](#) [1938-0-00-00-00-00-03-0](#) [1942-0-00-00-00-00-03-0](#) [2101-3-00-44-00-00-07-0](#) [2108-2-00-50-00-00-07-0](#) [2109-2-00-44-00-00-07-0](#) [2110-2-00-44-00-00-07-0](#) [2111-2-00-00-00-00-07-0](#) [2113-4-00-44-00-00-07-0](#) [2301-3-00-44-00-00-07-0](#) [2308-1-00-50-00-00-07-0](#) [2313-2-00-00-00-00-07-0](#) [2315-2-01-44-00-00-07-0](#) [2317-2-00-50-00-00-07-0](#) [2333-1-00-50-00-00-07-0](#) [9000-0-00-00-00-00-03-0](#) [2506-2-00-50-00-00-07-0](#) [2507-2-01-44-00-00-07-0](#) [2508-2-00-44-00-00-07-0](#) [2561-2-00-44-00-00-07-0](#)