

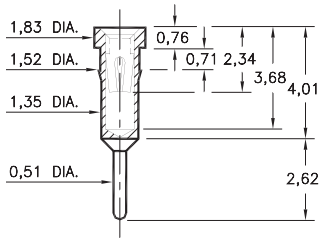
# PIN RECEPTACLES

FOR 0,38 - 0,64 DIAMETER PINS

## 4011

4011-0-15-XX-30-XX-04-0

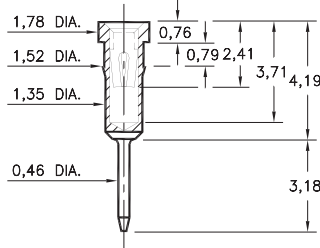
Press-fit in 1,45 mounting hole



## 1801

1801-0-15-XX-30-XX-04-0

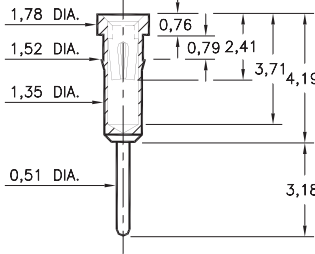
Press-fit in 1,45 mounting hole.  
Shell is Phosphor Bronze Alloy 544 (B2)



## 1001

1001-0-15-XX-3X-XX-04-0

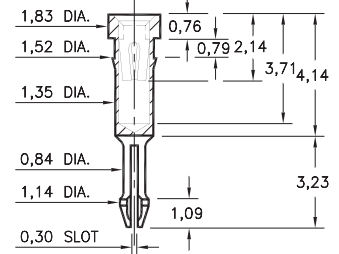
Press-fit in 1,45 mounting hole



## 0156

0156-0-18-XX-30-XX-04-0

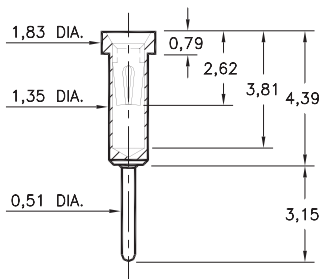
Self-retention socket pin 0,97 - 1,09 hole prior to soldering



## 0255

0255-0-15-XX-30-XX-04-0

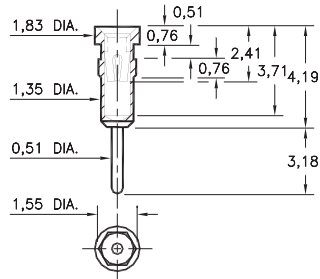
Solder mount in 0,56 min. mounting hole



## 1109

1109-0-15-XX-30-XX-04-0

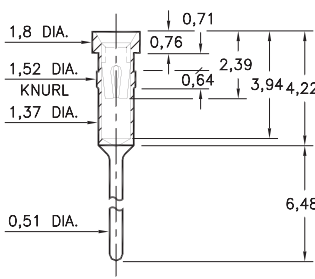
Hex press-fit in 1,45 plated through-hole



## 3013

3013-0-15-XX-32-XX-04-0

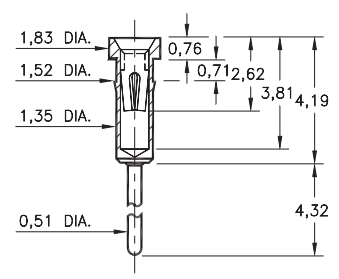
Press-fit in 1,45 mounting hole



## 0134

0134-0-15-XX-3X-XX-04-0

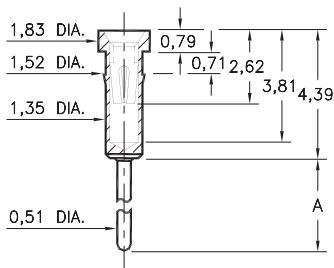
Press-fit in 1,45 mounting hole



## 0132/0135

013X-0-15-XX-30-XX-04-0

Press-fit in 1,45 mounting hole

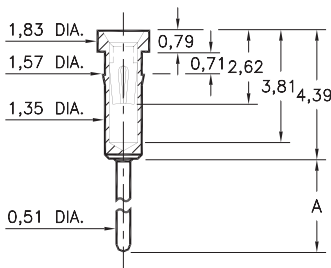


Basic Part Number	Length A
0132-0	6,93
0135-0	4,65

## 0133/0147

01XX-0-15-XX-30-XX-04-0

Press-fit in 1,5 mounting hole



Basic Part Number	Length A
0133-0	9,7
0147-0	14,3

### SPECIFICATIONS:

Shell Material: Brass Alloy 360, 1/2 Hard

Contact Material: Beryllium Copper Alloy 172, HT

Dimensions: Millimeters

Tolerances On: Lengths: ± 0,13  
Diameters: ± 0,051  
Angles: ± 2°



ORDER CODE: XXXX - X - 15 - XX - XX - XX - 10 - 0

BASIC PART #

SPECIFY SHELL FINISH:

- 01 5,08µm TIN/LEAD OVER NICKEL
- ◆ 80 5,08µm TIN OVER NICKEL (RoHS)
- ◆ 15 0,25µm GOLD OVER NICKEL (RoHS)

SPECIFY CONTACT FINISH:

- 02 2,54µm TIN/LEAD OVER NICKEL
- ◆ 84 2,54µm TIN OVER NICKEL (RoHS)
- ◆ 27 0,76µm GOLD OVER NICKEL (RoHS)

SELECT CONTACT:

#30 or #32 CONTACT (DATA ON PAGE 253)

(For alternate contact choices, see groups B and C on page 248)



## X-ON Electronics

Largest Supplier of Electrical and Electronic Components

*Click to view similar products for [Circuit Board Hardware - PCB category](#):*

*Click to view products by [Mill-Max manufacturer](#):*

Other Similar products are found below :

[8919-0-00-15-00-00-03-0](#) [0135-0-15-01-30-27-04-0](#) [5970-1-15-01-32-14-04-0](#) [0149-0-15-15-30-27-04-0](#) [MBI 1 BLUE](#) [7305-0-15-15-47-14-10-0](#) [MLN 150/1 BLACK](#) [8579-0-15-80-11-27-10-0](#) [8579-1-15-15-11-27-10-0](#) [8830-0-15-01-22-14-10-0](#) [8836-0-00-21-00-00-03-0](#) [PRUEF 2 RED](#) [9976-0-00-00-00-00-03-0](#) [PW1616](#) [1215-3-05-00-00-00-01-0](#) [1231](#) [1303-0-15-15-47-14-04-0](#) [1404-3](#) [1404-4](#) [1406-4](#) [1407-3](#) [1406-3](#) [1407-4](#) [1408-3](#) [1424-4](#) [1427-3](#) [1419-4](#) [1426-4](#) [MPS 1 BLACK](#) [1548-103](#) [1938-0-00-00-00-00-03-0](#) [1942-0-00-00-00-00-03-0](#) [2101-3-00-44-00-00-07-0](#) [2108-2-00-50-00-00-07-0](#) [2109-2-00-44-00-00-07-0](#) [2110-2-00-44-00-00-07-0](#) [2111-2-00-00-00-00-07-0](#) [2113-4-00-44-00-00-07-0](#) [2301-3-00-44-00-00-07-0](#) [2308-1-00-50-00-00-07-0](#) [2313-2-00-00-00-00-07-0](#) [2315-2-01-44-00-00-07-0](#) [2317-2-00-50-00-00-07-0](#) [2333-1-00-50-00-00-07-0](#) [9000-0-00-00-00-00-03-0](#) [2506-2-00-50-00-00-07-0](#) [2507-2-01-44-00-00-07-0](#) [2508-2-00-44-00-00-07-0](#) [2561-2-00-44-00-00-07-0](#) [9220](#)