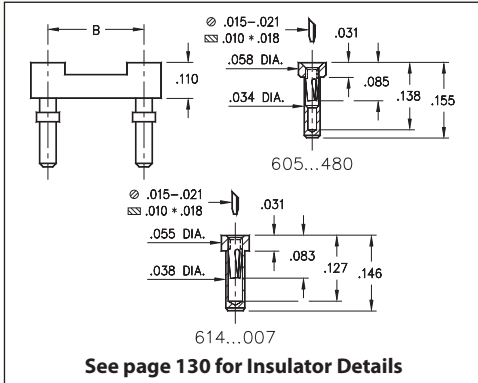
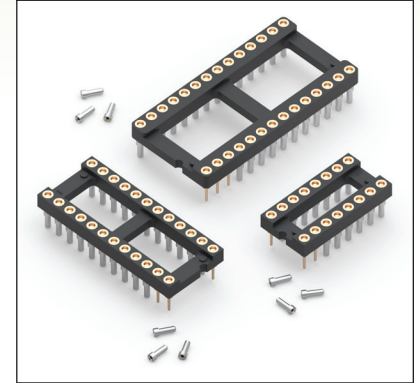


# DUAL-IN-LINE SOCKETS

## SERIES 605, 614 • CARRIER TYPE, LOW PROFILE • OPEN FRAME



- Low profile receptacles sit only .031" high above the board
- Removable plastic carriers can be returned for reloading
- Hi-Rel, 3-finger BeCu #11 contact is rated at 3 amps. See page 251 for details
- Series 605 and 614 use MM #1407 & #0548 pins. See page 157 for details
- Insulators are high temperature thermoplastic, suitable for all soldering operations
- For Electrical, Mechanical and Environmental Data, see page 264 for details



Total number of pins				Quantity per tube	ORDERING INFORMATION				
	A	B	C		Length = .146 (.039 Min. Mounting Hole)		Length = .155 (.035 Min. Mounting Hole)		
10	0.5	0.2	0.3	40	614-XX-210-31-007000	605-XX-210-11-480000			
4	0.2	0.3	0.4	102	614-XX-304-31-007000	605-XX-304-11-480000			
6	0.3	0.3	0.4	68	614-XX-306-31-007000	605-XX-306-11-480000			
8	0.4	0.3	0.4	50	614-XX-308-31-007000	605-XX-308-11-480000			
10	0.5	0.3	0.4	40	614-XX-310-31-007000	605-XX-310-11-480000			
14	0.7	0.3	0.4	28	614-XX-314-31-007000	605-XX-314-11-480000			
16	0.8	0.3	0.4	25	614-XX-316-31-007000	605-XX-316-11-480000			
18	0.9	0.3	0.4	22	614-XX-318-31-007000	605-XX-318-11-480000			
20	1.0	0.3	0.4	20	614-XX-320-31-007000	605-XX-320-11-480000			
22	1.1	0.3	0.4	18	614-XX-322-31-007000	605-XX-322-11-480000			
24	1.2	0.3	0.4	16	614-XX-324-31-007000	605-XX-324-11-480000			
28	1.4	0.3	0.4	14	614-XX-328-31-007000	605-XX-328-11-480000			
20	1.0	0.4	0.5	20	614-XX-420-31-007000	605-XX-420-11-480000			
22	1.1	0.4	0.5	18	614-XX-422-31-007000	605-XX-422-11-480000			
24	1.2	0.4	0.5	16	614-XX-424-31-007000	605-XX-424-11-480000			
28	1.4	0.4	0.5	14	614-XX-428-31-007000	605-XX-428-11-480000			
32	1.6	0.4	0.5	12	614-XX-432-31-007000	605-XX-432-11-480000			
24	1.2	0.6	0.7	16	614-XX-624-31-007000	605-XX-624-11-480000			
28	1.4	0.6	0.7	14	614-XX-628-31-007000	605-XX-628-11-480000			
32	1.6	0.6	0.7	12	614-XX-632-31-007000	605-XX-632-11-480000			
36	1.8	0.6	0.7	11	614-XX-636-31-007000	605-XX-636-11-480000			
40	2.0	0.6	0.7	10	614-XX-640-31-007000	605-XX-640-11-480000			
42	2.1	0.6	0.7	9	614-XX-642-31-007000	605-XX-642-11-480000			
48	2.4	0.6	0.7	8	614-XX-648-31-007000	605-XX-648-11-480000			
50	2.5	0.6	0.7	8	614-XX-650-31-007000	605-XX-650-11-480000			
52	2.6	0.6	0.7	7	614-XX-652-31-007000	605-XX-652-11-480000			
50	2.5	0.9	1.0	8	614-XX-950-31-007000	605-XX-950-11-480000			
52	2.6	0.9	1.0	7	614-XX-952-31-007000	605-XX-952-11-480000			
64	3.2	0.9	1.0	6	614-XX-964-31-007000	605-XX-964-11-480000			
SPECIFY PLATING CODE XX =					91	93	41	43	
Sleeve (Pin)					200 μ" Sn/Pb	200 μ" Sn/Pb	200 μ" Sn	200 μ" Sn	
Contact (Clip)					10 μ" Au	30 μ" Au	10 μ" Au	30 μ" Au	



XX=Plating Code  
See Below



## X-ON Electronics

Largest Supplier of Electrical and Electronic Components

*Click to view similar products for [IC & Component Sockets](#) category:*

*Click to view products by [Mill-Max](#) manufacturer:*

Other Similar products are found below :

[714-43-102-31-012000](#) [0066-3-17-15-30-14-02-0](#) [0134-0-15-15-32-27-04-0](#) [614-DG5](#) [6527-0-00-15-00-00-03-0](#) [670](#) [672](#) [673](#) [712-93-120-41-001000](#) [714-93-104-31-018000](#) [8059-4G1-LF](#) [807-22-001-10-001101](#) [807-22-001-10-003101](#) [807-22-001-10-004101](#) [807-22-001-10-006101](#) [807-22-001-30-011101](#) [807-22-001-30-012101](#) [807-22-001-30-013101](#) [807-22-001-30-014101](#) [8-1437531-4](#) [8150-6P10](#) [833-93-034-10-001000](#) [835-43-014-10-001000](#) [851-41-006-10-001000](#) [851-43-008-20-001000](#) [851-43-014-20-001000](#) [851-93-006-20-001000](#) [851-93-010-20-001000](#) [852-10-026-10-001000](#) [853-43-020-10-001000](#) [86.010.0053.0](#) [116-43-306-41-003000](#) [116-43-308-41-007000](#) [116-87-308-41-007101](#) [PX-68LCC](#) [PX-84LCC](#) [121-13-318-41-001000](#) [121-13-320-41-001000](#) [121-13-308-41-001000](#) [123-43-314-41-801000](#) [123-43-420-41-001000](#) [123-43-636-41-001000](#) [123-87-320-41-001101](#) [122-13-316-41-001000](#) [123-13-624-41-001000](#) [123-43-306-41-001000](#) [123-43-322-41-801000](#) [123-43-428-41-001000](#) [123-43-624-41-001000](#) [12-3513-11](#)