

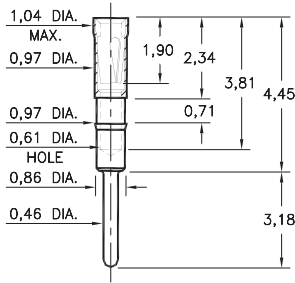
# PIN RECEPTACLES

**FOR 0,38 - 0,46 DIAMETER PINS (#09 CONTACT)  
FOR 0,38 - 0,51 DIAMETER PINS (#11 CONTACT)  
AND 0,38 - 0,56 DIAMETER PINS (#21 CONTACT)**

## 0467

**0467-0-15-XX-21-XX-04-0**

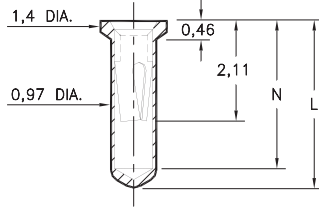
Press-fit in 0,94 mounting hole



## 0552

**0552-X-15-XX-X1-XX-10-0**

Solder mount in 1,02 min. mounting hole  
Also available on 16mm wide carrier tape:  
1,500 parts per 330mm reel  
Order as: 0552-X-57-XX-X1-XX-10-0

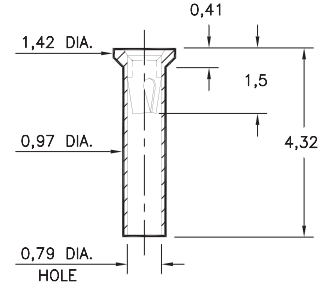


Basic Part Number	Length L	Depth N
<b>0552-1</b>	3,45	3,05
<b>0552-2</b>	4,32	3,81

## 5522

**5522-0-15-XX-09-XX-10-0**

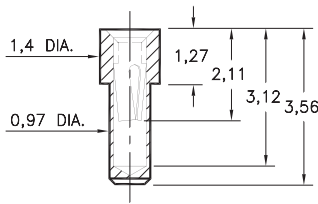
Solder mount in 1,02 min. mounting hole



## 0569

**0569-0-15-XX-X1-XX-10-0**

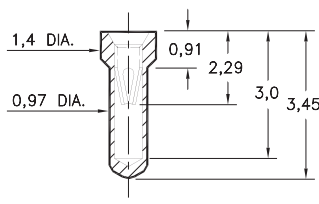
Solder mount in 1,02 min. mounting hole



## 6023

**6023-0-15-XX-21-XX-10-0**

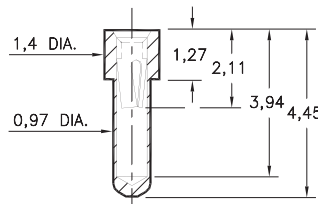
Solder mount in 1,02 min. mounting hole



## 6214

**6214-0-15-XX-21-XX-10-0**

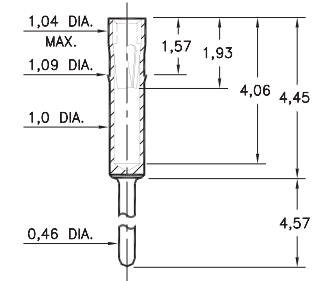
Solder mount in 1,02 min. mounting hole



## 2086

**2086-0-15-XX-21-XX-04-0**

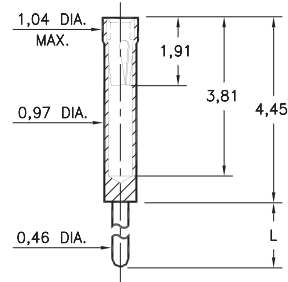
Press-fit in 1,02 mounting hole



## 0461

**0461-X-15-XX-X1-XX-04-0**

Solder mount in 0,51 min. mounting hole

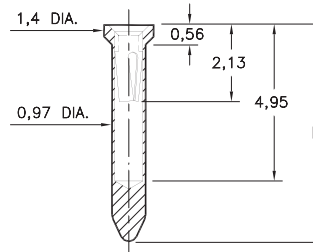


Basic Part Number	Length L
<b>0461-0</b>	10,16
<b>0461-1</b>	6,99
<b>0461-2</b>	4,57
<b>0461-3</b>	3,18
<b>0461-4</b>	1,52
<b>0461-5</b>	11,18

## 8579

**8579-X-15-XX-X1-XX-10-0**

Solder mount in 1,02 min. mounting hole  
Also available on 24mm wide carrier tape:  
1,200 parts per 330mm reel  
Order as: 8579-0-57-XX-X1-XX-10-0



Basic Part Number	Length L
<b>8579-0</b>	5,94
<b>8579-1</b>	7,49

### SPECIFICATIONS:

**Shell Material:** Brass Alloy 360, 1/2 Hard

**Contact Material:** Beryllium Copper Alloy 172, HT

**Dimensions:** Millimeters

**Tolerances On:** Lengths: ± 0,13

Diameters: ± 0,051

Angles: ± 2°



**ORDER CODE: XXXX - X - 15 - XX - XX - XX - XX - 0**

**BASIC PART #**

**SPECIFY SHELL FINISH:**

- ◆ **01** 5,08µm TIN/LEAD OVER NICKEL
- ◆ **80** 5,08µm TIN OVER NICKEL (RoHS)
- ◆ **15** 0,25µm GOLD OVER NICKEL (RoHS)

**SPECIFY CONTACT FINISH:**

- ◆ **02** 2,54µm TIN/LEAD OVER NICKEL
- ◆ **84** 2,54µm TIN OVER NICKEL (RoHS)
- ◆ **27** 0,76µm GOLD OVER NICKEL (RoHS)

**SELECT CONTACT:**

**#09, #11 or #21 CONTACT (DATA ON PAGES 250 & 251)**  
(For alternate contact choices, see group A on page 248)



## X-ON Electronics

Largest Supplier of Electrical and Electronic Components

*Click to view similar products for [Circuit Board Hardware - PCB category](#):*

*Click to view products by [Mill-Max manufacturer](#):*

Other Similar products are found below :

[8919-0-00-15-00-00-03-0](#) [0135-0-15-01-30-27-04-0](#) [5970-1-15-01-32-14-04-0](#) [0149-0-15-15-30-27-04-0](#) [MBI 1 BLUE](#) [7305-0-15-15-47-14-10-0](#) [MLN 150/1 BLACK](#) [8579-0-15-80-11-27-10-0](#) [8579-1-15-15-11-27-10-0](#) [8830-0-15-01-22-14-10-0](#) [8836-0-00-21-00-00-03-0](#) [PRUEF 2 RED](#) [9976-0-00-00-00-00-03-0](#) [PW1616](#) [1215-3-05-00-00-00-01-0](#) [1231](#) [1303-0-15-15-47-14-04-0](#) [1404-3](#) [1404-4](#) [1406-4](#) [1407-3](#) [1406-3](#) [1407-4](#) [1408-3](#) [1424-4](#) [1427-3](#) [1419-4](#) [1426-4](#) [1548-103](#) [1938-0-00-00-00-00-03-0](#) [1942-0-00-00-00-00-03-0](#) [2101-3-00-44-00-00-07-0](#) [2108-2-00-50-00-00-07-0](#) [2109-2-00-44-00-00-07-0](#) [2110-2-00-44-00-00-07-0](#) [2111-2-00-00-00-00-07-0](#) [2113-4-00-44-00-00-07-0](#) [2301-3-00-44-00-00-07-0](#) [2308-1-00-50-00-00-07-0](#) [2313-2-00-00-00-00-07-0](#) [2315-2-01-44-00-00-07-0](#) [2317-2-00-50-00-00-07-0](#) [2333-1-00-50-00-00-07-0](#) [9000-0-00-00-00-00-03-0](#) [2506-2-00-50-00-00-07-0](#) [2507-2-01-44-00-00-07-0](#) [2508-2-00-44-00-00-07-0](#) [2561-2-00-44-00-00-07-0](#) [9220](#) [9234-0-15-15-30-14-10-0](#)