

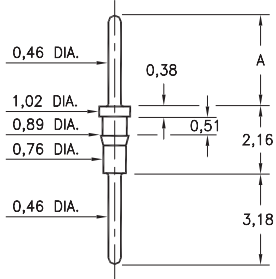
# MALE PCB PINS

## PRINTED CIRCUIT PINS

### 8685/9036

XXXX-0-00-XX-00-00-03-0

Press-fit in 0,84 mounting hole  
Pin material is Phosphor Bronze 544 (B2)

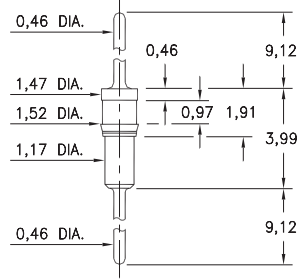


Basic Part Number	Length A
8685-0	3,18
9036-0	4,45

### 9051

9051-0-00-XX-00-00-03-0

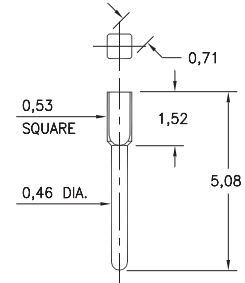
Press-fit in 1,45 mounting hole



### 8969

8969-0-05-XX-00-00-03-0

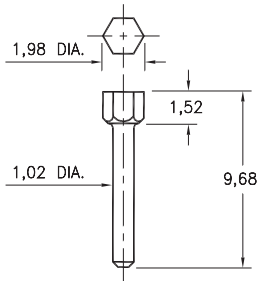
Square press-fit in 0,58 plated through-hole  
(Use .7mm drill prior to plating)



### 8979

8979-0-00-XX-00-00-03-0

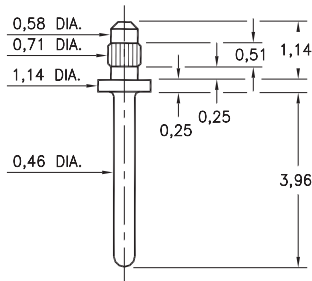
Hex press-fit in 1,88 plated through-hole



### 9159

9159-0-00-XX-00-00-03-0

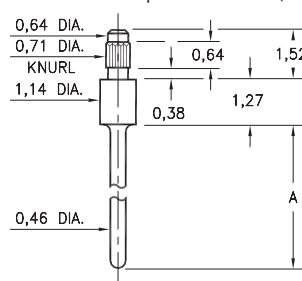
Press-fit in 0,66 mounting hole



### 3155/5155

X155-0-00-XX-00-00-03-0

Press-fit in 0,66 mounting hole  
Pin material is Phosphor Bronze 544 (B2)

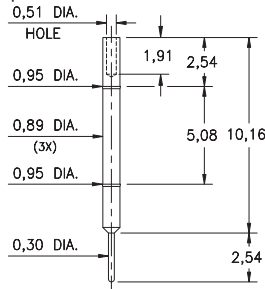


Basic Part Number	Length A
3155-0	4,57
5155-0	3,30

### 4194

4194-0-00-XX-00-00-08-0

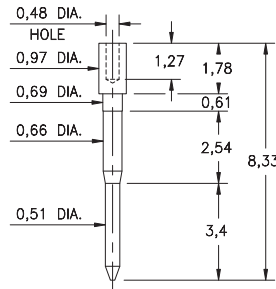
Wire crimp termination & press-fit in 0,91 hole  
Accepts wire sizes 30 AWG Max. / 36 AWG Min.



### 5556

5556-0-00-XX-00-00-38-0

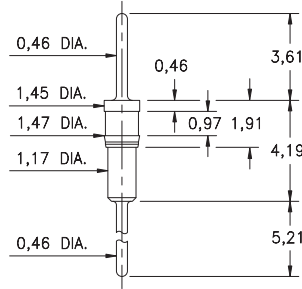
Wire crimp termination. Accepts wire sizes 30 AWG Max. / 36 AWG Min.



### 3790

3790-0-00-XX-00-00-03-0

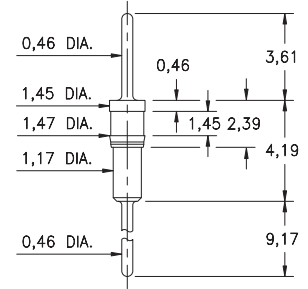
Press-fit in 1,45 mounting hole



### 3796

3796-0-00-XX-00-00-03-0

Press-fit in 1,45 mounting hole



#### SPECIFICATIONS:

**Pin Material:** Brass Alloy 360, 1/2 Hard  
(Except where noted)

**Dimensions:** Millimeters

**Tolerances On:** Lengths:  $\pm 0,13$   
Diameters:  $\pm 0,051$   
Angles:  $\pm 2^\circ$



ORDER CODE: XXXX - X - 0X - XX - 00 - 00 - XX - 0

BASIC PART #

SPECIFY PIN FINISH:

- 01 5,08 $\mu$ m TIN/LEAD OVER NICKEL
- ◆ 80 5,08 $\mu$ m TIN OVER NICKEL (RoHS)
- ◆ 15 0,25 $\mu$ m GOLD OVER NICKEL (RoHS)
- ◆ 21 0,51 $\mu$ m GOLD OVER NICKEL (RoHS)
- ◆ 34 1,27 $\mu$ m GOLD OVER NICKEL (RoHS)



## X-ON Electronics

Largest Supplier of Electrical and Electronic Components

*Click to view similar products for [Circuit Board Hardware - PCB category](#):*

*Click to view products by [Mill-Max manufacturer](#):*

Other Similar products are found below :

[8919-0-00-15-00-00-03-0](#) [0135-0-15-01-30-27-04-0](#) [5970-1-15-01-32-14-04-0](#) [0149-0-15-15-30-27-04-0](#) [MBI 1 BLUE](#) [7305-0-15-15-47-14-10-0](#) [MLN 150/1 BLACK](#) [8579-0-15-80-11-27-10-0](#) [8579-1-15-15-11-27-10-0](#) [8830-0-15-01-22-14-10-0](#) [8836-0-00-21-00-00-03-0](#) [PRUEF 2 RED](#) [9976-0-00-00-00-00-03-0](#) [PW1616](#) [1215-3-05-00-00-00-01-0](#) [1231](#) [1303-0-15-15-47-14-04-0](#) [1404-3](#) [1404-4](#) [1406-4](#) [1407-3](#) [1406-3](#) [1407-4](#) [1408-3](#) [1424-4](#) [1427-3](#) [1419-4](#) [1426-4](#) [1548-103](#) [1938-0-00-00-00-00-03-0](#) [1942-0-00-00-00-00-03-0](#) [2101-3-00-44-00-00-07-0](#) [2108-2-00-50-00-00-07-0](#) [2109-2-00-44-00-00-07-0](#) [2110-2-00-44-00-00-07-0](#) [2111-2-00-00-00-00-07-0](#) [2113-4-00-44-00-00-07-0](#) [2301-3-00-44-00-00-07-0](#) [2308-1-00-50-00-00-07-0](#) [2313-2-00-00-00-00-07-0](#) [2315-2-01-44-00-00-07-0](#) [2333-1-00-50-00-00-07-0](#) [9000-0-00-00-00-00-03-0](#) [2506-2-00-50-00-00-07-0](#) [2507-2-01-44-00-00-07-0](#) [2508-2-00-44-00-00-07-0](#) [2561-2-00-44-00-00-07-0](#) [9220](#) [9234-0-15-15-30-14-10-0](#) [LAS S G BLACK](#)