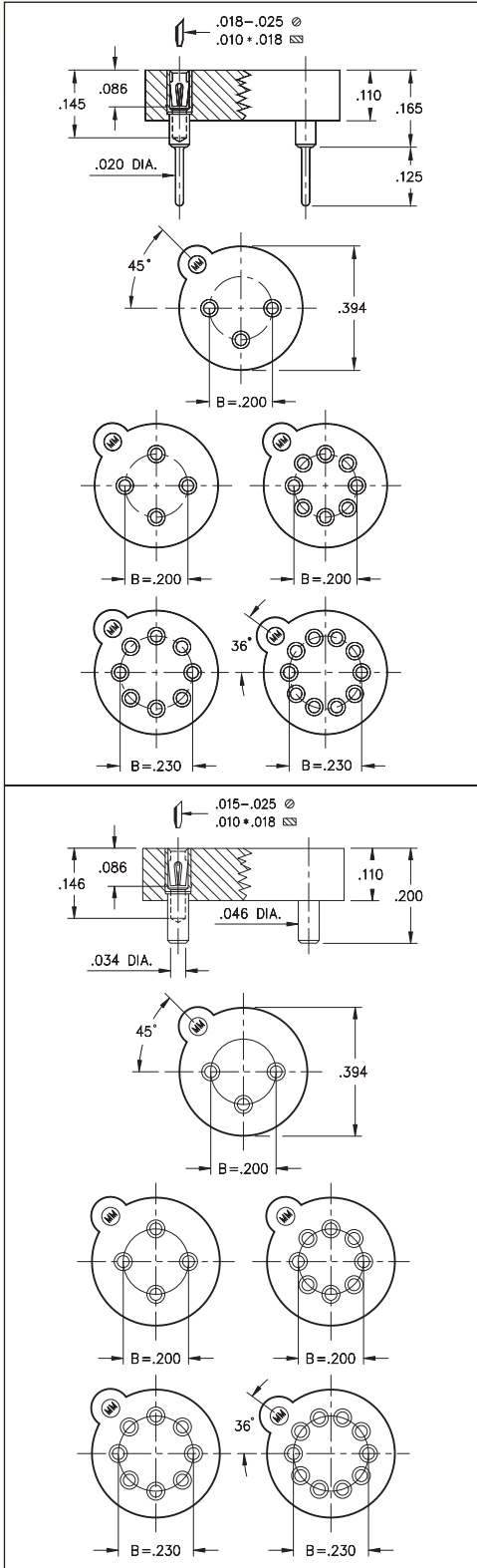


TRANSISTOR SOCKETS

SERIES 917 • SURFACE AND THROUGH-HOLE MOUNT



- Series 917 TO package sockets are available in 3, 4, 8 and 10 positions
- Two 8 pin versions feature pin centers on .200" or .230" circle
- Series 917...005 use MM #1705 and MM #1802 pins, see pages 168 and 169 for details. Receptacles use Hi-Rel, 4 finger #30 contact rated at 3 amps. See page 253 for details
- Series 917...001 uses MM #1701 pins. See page 171 for details. Receptacles use Hi-Rel, 4 finger #30 contact rated at 3 amps. See page 253 for details
- Insulators are high temperature thermoplastic, suitable for all soldering operations
- For Electrical, Mechanical and Environmental Data, see page 264 for details



ORDERING INFORMATION

Transistor Sockets (Through-Hole Mount)

Type	Circle Dia.	Number of Pins	Ordering Information
TO-5	0.200	3	917-XX-103-41-005000
TO-5	0.200	4	917-XX-104-41-005000
TO-5	0.200	8	917-XX-108-41-005000
TO-100	0.230	8	917-XX-208-41-005000
TO-100	0.230	10	917-XX-210-41-005000

Transistor Sockets (Surface Mount)

Type	Circle Dia.	Number of Pins	Ordering Information
TO-5	0.200	3	917-XX-103-41-001000
TO-5	0.200	4	917-XX-104-41-001000
TO-5	0.200	8	917-XX-108-41-001000
TO-100	0.230	8	917-XX-208-41-001000
TO-100	0.230	10	917-XX-210-41-001000



Tape and Reel Packaging: (Surface Mount ONLY)

Ordering Information: 917-XX-XXX-41-001799

Available on 24mm wide tape, 730 parts per 13" reel

XX=Plating Code
See Below

RoHS-2
2011/65/EU

SPECIFY PLATING CODE XX=	91	93	41	43	47
Sleeve (Pin) 	200 μ"Sn/Pb	200 μ"Sn/Pb	200 μ"Sn	200 μ"Sn	200 μ"Sn
Contact (Clip) 	10 μ"Au	30 μ"Au	10 μ"Au	30 μ"Au	Au Flash



X-ON Electronics

Largest Supplier of Electrical and Electronic Components

Click to view similar products for [IC & Component Sockets](#) category:

Click to view products by [Mill-Max](#) manufacturer:

Other Similar products are found below :

[0066-3-17-15-30-14-02-0](#) [670](#) [672](#) [673](#) [694-13-640-00-672-000](#) [712-93-120-41-001000](#) [714-93-104-31-018000](#) [8059-4G1-LF](#) [807-22-001-10-001101](#) [807-22-001-10-006101](#) [807-22-001-30-011101](#) [807-22-001-30-012101](#) [807-22-001-30-013101](#) [807-22-001-30-014101](#) [8-1437531-4](#) [8150-6P10](#) [833-93-034-10-001000](#) [851-41-006-10-001000](#) [851-43-008-20-001000](#) [851-43-014-20-001000](#) [851-93-006-20-001000](#) [851-93-010-20-001000](#) [853-43-020-10-001000](#) [86.010.0053.0](#) [116-43-308-41-007000](#) [PX-68LCC](#) [121-13-318-41-001000](#) [121-13-320-41-001000](#) [121-13-308-41-001000](#) [123-43-314-41-801000](#) [123-43-420-41-001000](#) [123-87-320-41-001101](#) [122-13-316-41-001000](#) [123-13-624-41-001000](#) [123-43-306-41-001000](#) [12-3513-11](#) [123-91-320-41-001000](#) [126-43-310-41-002000](#) [AKSUN 37V-T](#) [1437503-9](#) [1437504-1](#) [146-44-308-41-013000](#) [APO-320-G-T](#) [146-43-308-41-012000](#) [160-10-308-00-001000](#) [160-40-320-00-001000](#) [214-99-306-01-670800](#) [232-1270-02-0602](#) [2-382761-4](#) [2-5331677-4](#)