

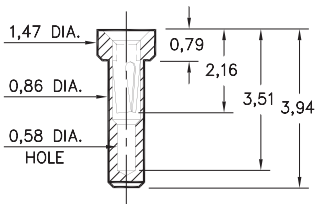
# PIN RECEPTACLES

**FOR 0,38 - 0,51 DIAMETER PINS (#1 CONTACT)  
AND 0,38 - 0,56 DIAMETER PINS (#2 CONTACT)  
(SEE SPECIFIC CONTACT RANGE ON PAGE 251)**

## 0548

**0548-0-15-XX-21-XX-10-0**

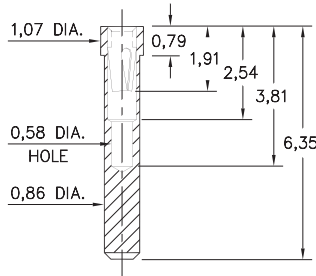
Solder mount in 0,91 min. mounting hole



## 8975

**8975-0-15-XX-21-XX-10-0**

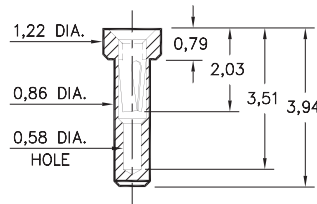
Solder mount in 0,91 min. mounting hole



## 3016

**3016-0-15-XX-21-XX-10-0**

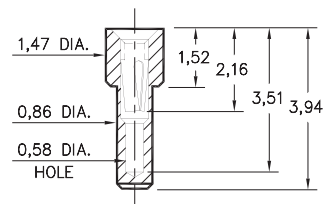
Solder mount in 0,91 min. mounting hole



## 9548

**9548-0-15-XX-21-XX-10-0**

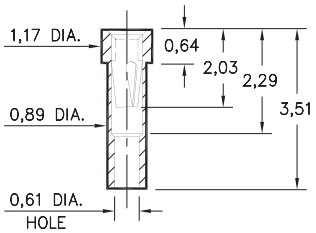
Solder mount in 0,91 min. mounting hole



## 8637

**8637-0-15-XX-21-XX-10-0**

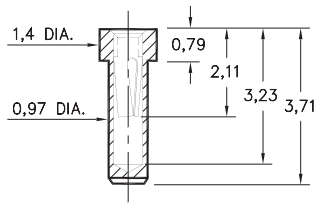
Solder mount in 0,94 min. mounting hole  
Also available on 16mm wide carrier tape:  
2,000 parts per 330mm reel  
Order as: 8637-0-57-XX-21-XX-10-0



## 1407

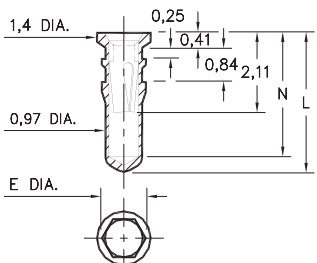
**1407-0-15-XX-11-XX-10-0**

Solder mount in 1,02 min. mounting hole



## 0553/4553/8553 X553-X-15-XX-X1-XX-10-0

Also available on 16mm wide carrier tape:  
1,580 parts per 330mm reel  
Order as: 0553-2-57-XX-11-XX-10-0



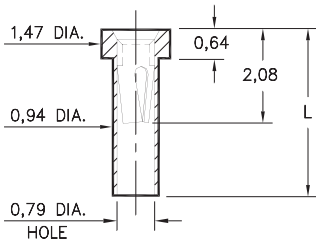
Hex press-fit in 1,04 plated through-hole  
for Part Numbers **0553-X** and **8553-0** ONLY  
Hex press-fit in 1,07 plated through-hole  
for Part Number **4553-0** ONLY

Basic Part Number	Hex Dia. E	Length L	Depth N
<b>0553-1</b>	1,12	3,56	3,15
<b>0553-2</b>	1,12	4,32	3,91
<b>0553-3</b>	1,12	7,16	6,76
<b>4553-0</b>	1,14	4,32	3,91
<b>8553-0</b>	1,12	6,22	5,82

## 0566

**0566-X-15-XX-21-XX-10-0**

Solder mount in 1,0 min. mounting hole

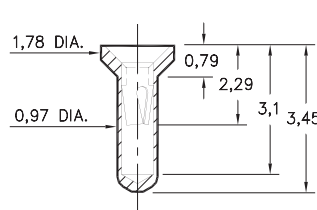


Basic Part Number	Length L
<b>0566-1</b>	2,11
<b>0566-2</b>	3,51

## 0442

**0442-0-15-XX-11-XX-10-0**

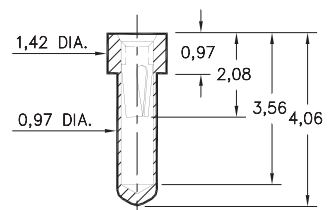
Solder mount in 1,02 min. mounting hole



## 0554

**0554-0-15-XX-21-XX-10-0**

Solder mount in 1,02 min. mounting hole



### SPECIFICATIONS:

**Shell Material:** Brass Alloy 360, 1/2 Hard

**Contact Material:** Beryllium Copper Alloy 172, HT

**Dimensions:** Millimeters

**Tolerances On:** Lengths: ± 0,13

Diameters: ± 0,051

Angles: ± 2°



**ORDER CODE: XXXX - X - XX - XX - XX - 10 - 0**

**BASIC PART #**

**SPECIFY SHELL FINISH:**

01 5,08µm TIN/LEAD OVER NICKEL

◆ 80 5,08µm TIN OVER NICKEL (RoHS)

◆ 15 0,25µm GOLD OVER NICKEL (RoHS)

**SPECIFY CONTACT FINISH:**

02 2,54µm TIN/LEAD OVER NICKEL

◆ 84 2,54µm TIN OVER NICKEL (RoHS)

◆ 27 0,76µm GOLD OVER NICKEL (RoHS)

**SELECT CONTACT:**

**#11 or #21 CONTACT (DATA ON PAGE 251)**

(For alternate contact choices, see group A on page 248)



## X-ON Electronics

Largest Supplier of Electrical and Electronic Components

*Click to view similar products for [Circuit Board Hardware - PCB category](#):*

*Click to view products by [Mill-Max manufacturer](#):*

Other Similar products are found below :

[8919-0-00-15-00-00-03-0](#) [0135-0-15-01-30-27-04-0](#) [5970-1-15-01-32-14-04-0](#) [0149-0-15-15-30-27-04-0](#) [MBI 1 BLUE](#) [7305-0-15-15-47-14-10-0](#) [MLN 150/1 BLACK](#) [8579-0-15-80-11-27-10-0](#) [8579-1-15-15-11-27-10-0](#) [8830-0-15-01-22-14-10-0](#) [8836-0-00-21-00-00-03-0](#) [PRUEF 2 RED](#) [9976-0-00-00-00-00-03-0](#) [PW1616](#) [1215-3-05-00-00-00-01-0](#) [1231](#) [1303-0-15-15-47-14-04-0](#) [1404-3](#) [1404-4](#) [1406-4](#) [1407-3](#) [1406-3](#) [1407-4](#) [1408-3](#) [1424-4](#) [1427-3](#) [1419-4](#) [1426-4](#) [1548-103](#) [1938-0-00-00-00-00-03-0](#) [1942-0-00-00-00-00-03-0](#) [2101-3-00-44-00-00-07-0](#) [2108-2-00-50-00-00-07-0](#) [2109-2-00-44-00-00-07-0](#) [2110-2-00-44-00-00-07-0](#) [2111-2-00-00-00-00-07-0](#) [2113-4-00-44-00-00-07-0](#) [2301-3-00-44-00-00-07-0](#) [2308-1-00-50-00-00-07-0](#) [2313-2-00-00-00-00-07-0](#) [2315-2-01-44-00-00-07-0](#) [2317-2-00-50-00-00-07-0](#) [2333-1-00-50-00-00-07-0](#) [9000-0-00-00-00-00-03-0](#) [2506-2-00-50-00-00-07-0](#) [2507-2-01-44-00-00-07-0](#) [2508-2-00-44-00-00-07-0](#) [2561-2-00-44-00-00-07-0](#) [9220](#) [9234-0-15-15-30-14-10-0](#)