

SOG SERIES

Super Thin Type Tactile Switch

MITSUMI

TACTILE SWITCHES

SLIDE SWITCHES

SWITCH SHEETS

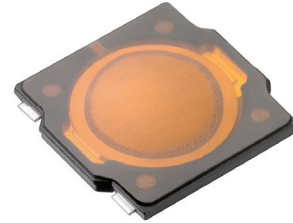
SWITCH KITS

FEATURES

- Original terminal structure reduces the mounting area
- Good feel from the wider pressing range
- High reliability due to dustproof design

APPLICATIONS

- Smartphones
- Digital cameras
- Gaming devices
- Wearables
- Other electronic devices - consumer, medical, commercial



PART NUMBER CODE

Series	Earth Terminal	Fixed Character	Operating Force	Air Vent	Positioning Boss	Packaging
<input type="text" value="SOG"/>	<input type="text" value="1 (without)"/>	<input type="text" value="5"/>	<input type="text" value="2 (1.6N)
4 (2.35N)"/>	<input type="text" value="A"/>	<input type="text" value="N (without)"/>	<input type="text" value="T (taping)"/>

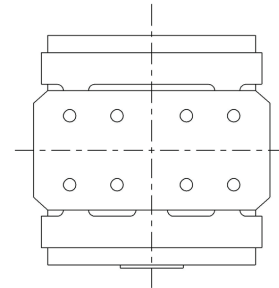
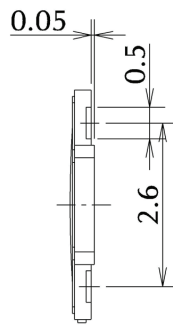
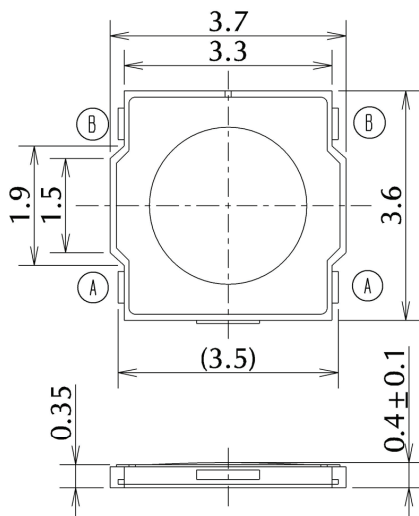
SPECIFICATIONS

Switch Type	SPST	Tactile
Electrical Characteristics	Rating (Resistive Load)	DC15V, 20mA
	Contact Resistance	1Ω or less
	Insulation Resistance	10MΩ or more
	Withstand Voltage	1 minute at AC 100V
Life	SOG-152ANT	1,000,000 times
	SOG-154ANT	500,000 times

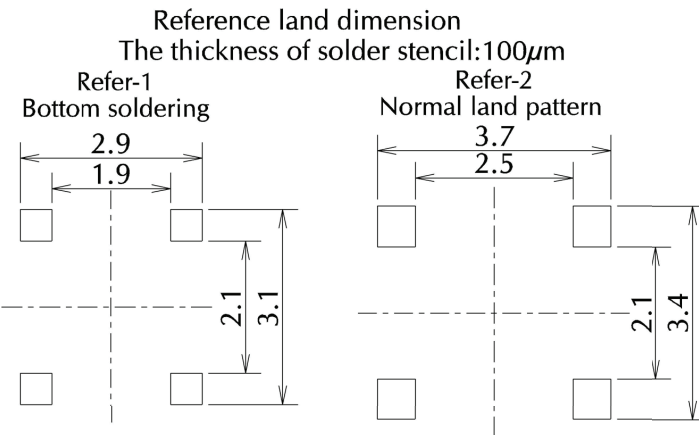
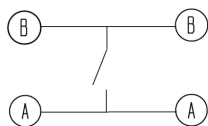
TYPE

Model Name	Model No.	Operating Force	Travel	Boss	Pcs/Reel
SOG-152ANT	R 667834	1.6N	0.15mm	Without	10,000
SOG-154ANT	R 667837	2.35N	0.15mm	Without	10,000

DIMENSIONS

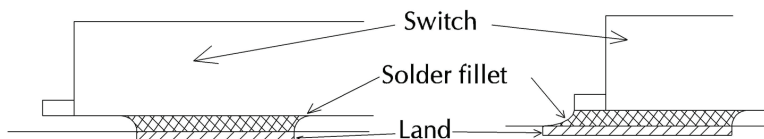


Circuit Diagram



It's possible to minimize the mounting area, but not possible to confirm solder fillet.

It's possible to confirm solder fillet.



X-ON Electronics

Largest Supplier of Electrical and Electronic Components

Click to view similar products for [Tactile Switches](#) category:

Click to view products by [MinebeaMitsumi](#) manufacturer:

Other Similar products are found below :

[6407-250V-25273P](#) [ADTSA62NV](#) [B3F-3123](#) [1977177-8](#) [1977266-1](#) [ADTSA63NV](#) [ADTSM21NSVTR](#) [ADTSM25RVTR](#) [ADTSM32NVTR](#)
[ADTSMW64RV](#) [1977120-6](#) [FSMRA4JHA04](#) [GS4.70F300QP](#) [KSC241J SP DELTA LFS](#) [3FTL600RAS](#) [3FTL640RAS](#) [Y96K132V0FPLFS](#)
[09158](#) [6407-250V-25343P](#) [ADTSM31NVTR](#) [2-1977120-7](#) [TSJW-5.2-260-TR](#) [TME1-01-Z](#) [Y651050400P](#) [KMT011MNGJLHS](#)
[ADTSG648NV](#) [ADTSM62KSVTR](#) [MJTP1138DTR](#) [ADTSM648NV](#) [95C06E3RAT](#) [3ATH9Q](#) [FSMRA8JHA04](#) [HARS0073](#)
[Y33R411N9FPLFT](#) [Y33R51139FPLFT](#) [Y31C01402FPLFS](#) [PTS645SK50SMTR92](#) [ADTSM32NVB](#) [KMS233GPWTFLG](#) [Y78B64124FP](#)
[Y33A812C5FP LFT](#) [Y56B2D120FP LFS](#) [PTS645 DVM83-BN125-2 LFS](#) [B3W 1000G](#) [B3F 1002C](#) [B3F 0047H](#) [B3W 1002C](#) [B3F 5001G](#)
[B3W 1100C](#) [1-1571563-4](#)