

SOU SERIES

Side Click Type Tactile Switch

MITSUMI

TACTILE SWITCHES

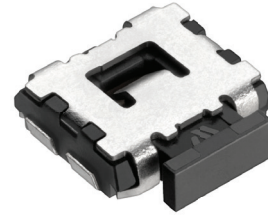
SLIDE SWITCHES

SWITCH SHEETS

SWITCH KITS

FEATURES








- Smaller mounting area
- Stainless steel dome material for long life and good click feel
- Suitable for controllers with side click in small equipment
- Suitable for SMT reflow soldering
- Original grounding structure can prevent flux from entering



APPLICATIONS

- Smartphones
- Digital cameras
- Gaming devices
- Other small electronic devices - consumer, medical

PART NUMBER CODE

Series	Earth Terminal	Height	Operating Force	Standard	Boss, Button	Packaging
						
SOU	2 (with)	4 (1.0mm)	2 (1.6N) 8 (2.0N) 4 (2.4N)	H	S (with) N (without)	T (taping)

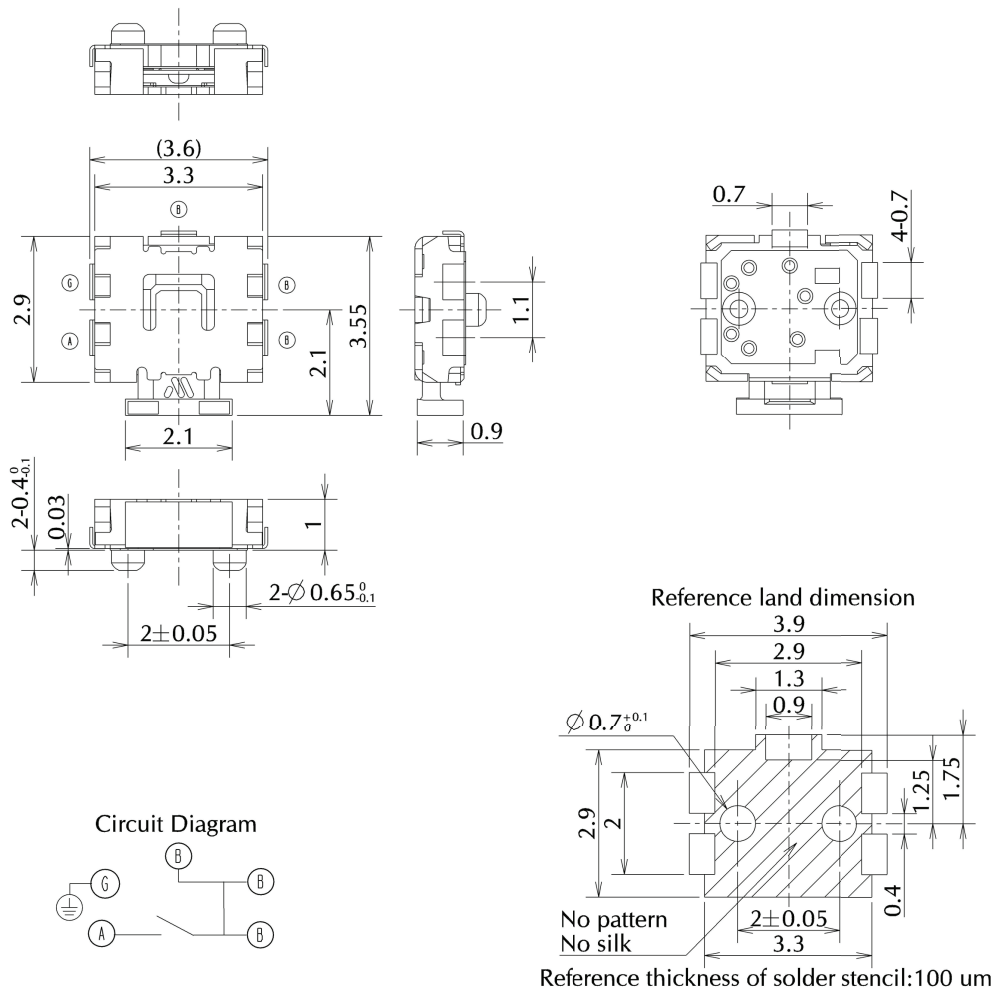
SPECIFICATIONS

Switch Type	SPST	Tactile
Electrical Characteristics	Rating (Resistive Load)	DC12V, 50mA
	Contact Resistance	1Ω or less
	Insulation Resistance	10MΩ or more
	Withstand Voltage	1 minute at AC 100V
Life	SOU-242HST, SOU-242HNT	100,000 times
	SOU-244HNT, SOU-244HST	100,000 times
	SOU-248HNT, SOU-248HST	100,000 times

TYPE

Model Name	Model No.	Operating Force	Travel	Boss	Pcs/Reel
SOU-242HST	R 666939	1.6N	0.2mm	With	5,000
SOU-242HNT	R 666994	1.6N	0.2mm	Without	5,000
SOU-248HST	R 667270	2.0N	0.2mm	With	5,000
SOU-248HNT	R 667271	2.0N	0.2mm	Without	5,000
SOU-244HST	R 667799	2.4N	0.2mm	With	5,000
SOU-244HNT	R 667823	2.4N	0.2mm	Without	5,000

DIMENSIONS



X-ON Electronics

Largest Supplier of Electrical and Electronic Components

Click to view similar products for [Tactile Switches](#) category:

Click to view products by [MinebeaMitsumi](#) manufacturer:

Other Similar products are found below :

[6407-250V-25273P](#) [ADTSA62NV](#) [B3F-3123](#) [1977177-8](#) [1977266-1](#) [ADTSA63NV](#) [ADTSM21NSVTR](#) [ADTSM25RVTR](#) [ADTSM32NVTR](#)
[ADTSMW64RV](#) [1977120-6](#) [FSMRA4JHA04](#) [GS4.70F300QP](#) [KSC241J SP DELTA LFS](#) [3FTL600RAS](#) [3FTL640RAS](#) [Y96K132V0FPLFS](#)
[09158](#) [6407-250V-25343P](#) [ADTSM31NVTR](#) [2-1977120-7](#) [TSJW-5.2-260-TR](#) [TME1-01-Z](#) [Y651050400P](#) [KMT011MNGJLHS](#)
[ADTSG648NV](#) [ADTSM62KSVTR](#) [MJTP1138DTR](#) [ADTSM648NV](#) [95C06E3RAT](#) [3ATH9Q](#) [FSMRA8JHA04](#) [HARS0073](#)
[Y33R411N9FPLFT](#) [Y33R51139FPLFT](#) [Y31C01402FPLFS](#) [PTS645SK50SMTR92](#) [ADTSM32NVB](#) [KMS233GPWTFLG](#) [Y78B64124FP](#)
[Y33A812C5FP LFT](#) [Y56B2D120FP LFS](#) [PTS645 DVM83-BN125-2 LFS](#) [B3W 1000G](#) [B3F 1002C](#) [B3F 0047H](#) [B3W 1002C](#) [B3F 5001G](#)
[B3W 1100C](#) [1-1571563-4](#)