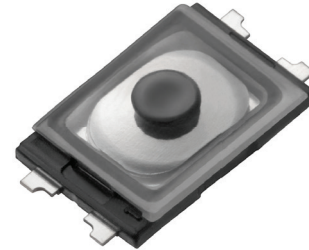


FEATURES

- Ultra small size (2.5×1.6mm)
- Good feel with the actuator
- High reliability with a small, thin and dustproof design
- IP68 dust / water resistance



APPLICATIONS

- Smartphones
- Digital cameras
- Gaming devices
- Wearables
- Other electronic devices - consumer, medical, commercial

PART NUMBER CODE

Series	Height	Actuator Type	Operating Force	Ablation Terminal
<div style="display: flex; gap: 5px;"> <div style="border: 1px solid black; width: 20px; height: 20px;"></div> <div style="border: 1px solid black; width: 20px; height: 20px;"></div> <div style="border: 1px solid black; width: 20px; height: 20px;"></div> </div>	<div style="display: flex; gap: 5px;"> <div style="border: 1px solid black; width: 20px; height: 20px;"></div> <div style="border: 1px solid black; width: 20px; height: 20px;"></div> <div style="border: 1px solid black; width: 20px; height: 20px;"></div> </div>	<div style="border: 1px solid black; width: 20px; height: 20px;"></div>	<div style="display: flex; gap: 5px;"> <div style="border: 1px solid black; width: 20px; height: 20px;"></div> <div style="border: 1px solid black; width: 20px; height: 20px;"></div> </div>	<div style="border: 1px solid black; width: 20px; height: 20px;"></div> <div style="border: 1px solid black; width: 20px; height: 20px; display: flex; align-items: center; justify-content: center; margin-left: 5px;">X</div>
STI	055 (0.55mm)	A	12 (1.2N) 16 (1.6N) 24 (2.4N)	A (IP68)

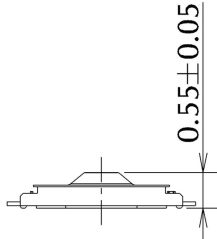
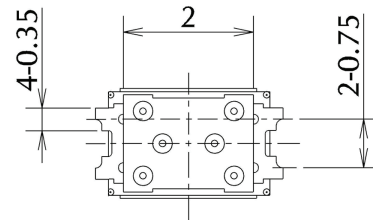
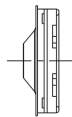
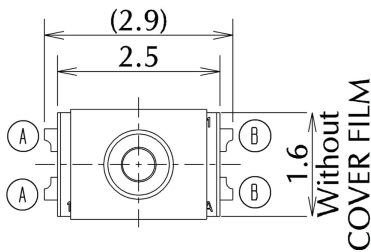
SPECIFICATIONS

Switch Type	SPST	Tactile
Electrical Characteristics	Rating (Resistive Load)	DC15V, 20mA
	Contact Resistance	1Ω or less
	Insulation Resistance	10MΩ or more
	Withstand Voltage	1 minute at AC 100V
Life	STI-055A12AX	500,000 times
	STI-055A16AX	500,000 times
	STI-055A24AX	200,000 times
Dust / Water Resistance	Protective Resistance	IP68 (1.5m depth x 30 min.)

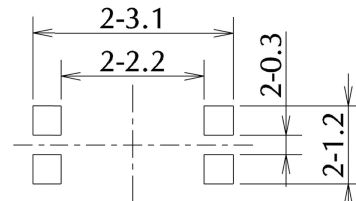
TYPE

Model Name	Model No.	Operating Force	Travel	Click Ratio	Boss	Pcs/Reel
STI-055A12AX	R 668048	1.2N	0.11mm	≥ 40%	Without	25,000
STI-055A16AX	R 668049	1.6N	0.11mm	≥ 40%	Without	25,000
STI-055A24AX	R 668050	2.4N	0.11mm	≥ 40%	Without	25,000

DIMENSIONS

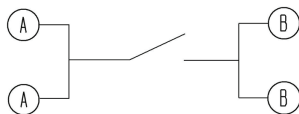


Reference solder stencil dimension

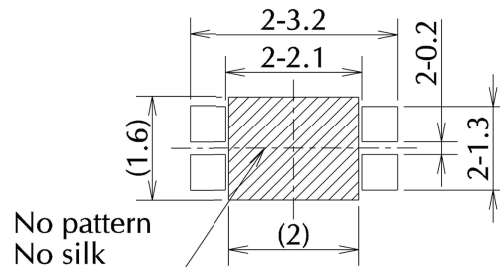


The thickness of solder stencil: 100 μm

Circuit diagram



Reference land dimension



X-ON Electronics

Largest Supplier of Electrical and Electronic Components

Click to view similar products for [Tactile Switches](#) category:

Click to view products by [MinebeaMitsumi](#) manufacturer:

Other Similar products are found below :

[6407-250V-25273P](#) [ADTSA62NV](#) [B3F-3123](#) [1977177-8](#) [1977266-1](#) [ADTSA63NV](#) [ADTSM21NSVTR](#) [ADTSM25RVTR](#) [ADTSM32NVTR](#)
[ADTSMW64RV](#) [1977120-6](#) [FSMRA4JHA04](#) [GS4.70F300QP](#) [KSC241J SP DELTA LFS](#) [3FTL600RAS](#) [3FTL640RAS](#) [Y96K132V0FPLFS](#)
[09158](#) [6407-250V-25343P](#) [ADTSM31NVTR](#) [2-1977120-7](#) [TSJW-5.2-260-TR](#) [TME1-01-Z](#) [Y651050400P](#) [KMT011MNGJLHS](#)
[ADTSG648NV](#) [ADTSM62KSVTR](#) [MJTP1138DTR](#) [ADTSM648NV](#) [95C06E3RAT](#) [3ATH9Q](#) [FSMRA8JHA04](#) [HARS0073](#)
[Y33R411N9FPLFT](#) [Y33R51139FPLFT](#) [Y31C01402FPLFS](#) [PTS645SK50SMTR92](#) [ADTSM32NVB](#) [KMS233GPWTFLG](#) [Y78B64124FP](#)
[Y33A812C5FP LFT](#) [Y56B2D120FP LFS](#) [PTS645 DVM83-BN125-2 LFS](#) [B3W 1000G](#) [B3F 1002C](#) [B3F 0047H](#) [B3W 1002C](#) [B3F 5001G](#)
[B3W 1100C](#) [1-1571563-4](#)