

Very Wideband RF Choke

ADCH-80+

50Ω 50 to 10000 MHz

Maximum Ratings

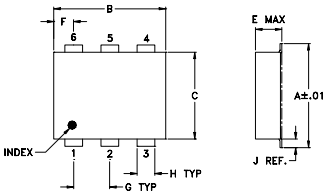
Operating Temperature	-40°C to 85°C
Storage Temperature	-55°C to 100°C
DC Current	250 mA

Permanent damage may occur if any of these limits are exceeded.

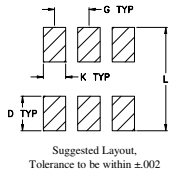
Pin Connections

RF-IN & DC	2
DC	5
NOT USED	1,3,4,6

Outline Drawing



PCB Land Pattern

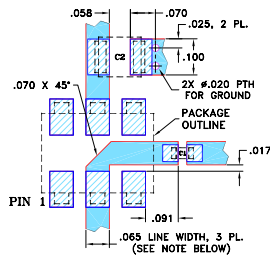


Outline Dimensions (inch/mm)

A	B	C	D	E	F	G
.272	.310	.220	.100	.112	.055	.100
6.91	7.87	5.59	2.54	2.84	1.40	2.54

H	J	K	L	wt
.030	.026	.065	.300	grams
0.76	0.66	1.65	7.62	0.20

Demo Board MCL P/N: TB-52 Suggested PCB Layout (PL-210)



CAPACITORS: C1: 6800 pF, 0603 SIZE; C2: 1.0 uF, 1311 SIZE.
 NOTES: 1. TRACE WIDTH IS SHOWN FOR ROGERS RO4350B WITH DIELECTRIC THICKNESS .030" ± .002"; COPPER: 1/2 OZ. EACH SIDE. FOR OTHER MATERIALS TRACE WIDTH MAY NEED TO BE MODIFIED.
 2. BOTTOM SIDE OF THE PCB IS CONTINUOUS GROUND PLANE.
 ■ DENOTES PCB COPPER LAYOUT WITH SMOBC (SOLDER MASK OVER BARE COPPER)
 ■ DENOTES COPPER LAND PATTERN FREE OF SOLDER MASK

Features

- low parasitic capacitance 0.1 pf typ.
- effective parallel resistance, Rch 800 ohm typ.
- aqueous washable
- protected by US Patent, 6,133,525

Applications

- biasing amplifiers
- biasing of laser diodes
- biasing of active antennas

Electrical Specifications

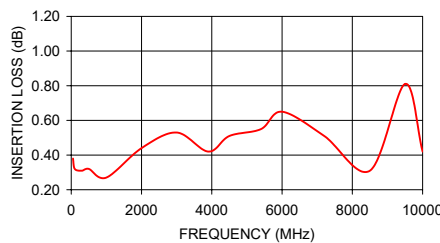
FREQ. RANGE (MHz)	INSERTION LOSS* (dB)		VSWR* (:1)		DC CURRENT (mA)	INDUCTANCE (μH) Typ.		
	Typ.	Max.	Typ.	Max.		@ 0mA	@ 50mA	@ 100mA
50-8000	0.3	1.0	1.1	1.35	100	7.0	1.8	1.0
50-10000	0.3	2.0	1.1	1.6	100	7.0	1.8	1.0

*tested with circuit shown below, Zo=50 ohms

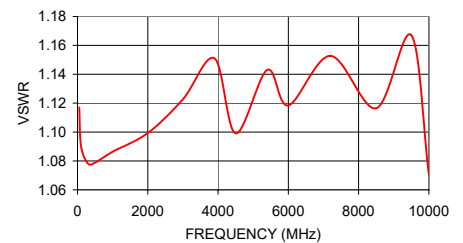
Typical Performance Data

FREQUENCY (MHz)	INSERTION LOSS (dB)	VSWR (:1)
50.00	0.38	1.12
100.00	0.32	1.09
300.00	0.31	1.08
500.00	0.32	1.08
1000.00	0.27	1.09
2000.40	0.44	1.10
3000.90	0.53	1.12
3900.00	0.42	1.15
4500.00	0.51	1.10
5400.00	0.55	1.14
6000.00	0.65	1.12
7199.80	0.51	1.15
8500.00	0.31	1.12
9500.20	0.81	1.17
10000.30	0.42	1.07

ADCH-80+
INSERTION LOSS

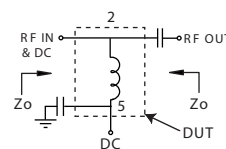


ADCH-80+
VSWR



Electrical Schematic

TEST CIRCUIT*



Notes

- Performance and quality attributes and conditions not expressly stated in this specification document are intended to be excluded and do not form a part of this specification document.
- Electrical specifications and performance data contained in this specification document are based on Mini-Circuits' applicable established test performance criteria and measurement instructions.
- The parts covered by this specification document are subject to Mini-Circuits' standard limited warranty and terms and conditions (collectively, "Standard Terms"); Purchasers of this part are entitled to the rights and benefits contained therein. For a full statement of the Standard Terms and the exclusive rights and remedies thereunder, please visit Mini-Circuits' website at www.minicircuits.com/MCLStore/terms.jsp



www.minicircuits.com P.O. Box 350166, Brooklyn, NY 11235-0003 (718) 934-4500 sales@minicircuits.com



Generic photo used for illustration purposes only
 CASE STYLE: CD542

+RoHS Compliant
 The +Suffix identifies RoHS Compliance. See our web site for RoHS Compliance methodologies and qualifications

Available Tape and Reel at no extra cost	
Reel Size	Devices/Reel
7"	10, 20, 50, 100, 200, 500
13"	1000

REV. E
 M158496
 ED-7562/2
 ADCH-80+
 DJ/TD/CP/AM
 200420

X-ON Electronics

Largest Supplier of Electrical and Electronic Components

Click to view similar products for [Common Mode Chokes / Filters](#) category:

Click to view products by [Mini-Circuits](#) manufacturer:

Other Similar products are found below :

[74279408](#) [PE-62911NL](#) [PE-64683](#) [RD5122-6-9M6](#) [ST6118T-R](#) [T8114NLT](#) [RD5122-10-6M0](#) [TCM0806G-350-2P-T](#) [TCM0806G-650-2P-T](#)
[IND-0110](#) [UAL21V07012500](#) [UAL21VR0802000](#) [UAL24VR06500CH](#) [UALSC023000000](#) [UALSC1020JH000](#) [UALSC1520JH000](#)
[UALSU10VR20010](#) [UALSU16VD30030](#) [UALSU16VD40010](#) [UALSU9H0305000](#) [UALSU9HF060300](#) [UALSU9VD070100](#)
[UALSU9VR070170](#) [36-00037](#) [5701610000](#) [UALW21HS072450](#) [UALSU9VD070400](#) [UALSU9HF050500](#) [UALSU9H0208000](#)
[UALSCF25081300](#) [UAL24VK06450CH](#) [PLT10HH501100PNB](#) [PLT10HH401100PNB](#) [PLT10HH1026R0PNB](#) [PE-67531](#) [EXC-X4CH120X](#)
[TLH10UB](#) [113 0R5](#) [2752041447](#) [2752045447](#) [CMS3-11-R](#) [23Z109SMNL-T](#) [7351V](#) [CMF16-153131](#) [744252510](#) [T8116NLT](#) [FE2X10-4-](#)
[2NL](#) [744253200](#) [744253101](#) [744252220](#) [TX8111NLT](#)