

# Surface Mount Frequency Mixer

## ADE-12+

Level 7 (LO Power +7 dBm) 50 to 1000 MHz

### Maximum Ratings

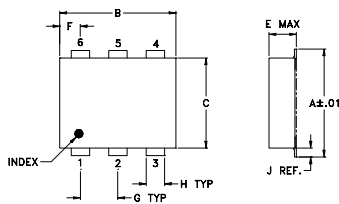
Operating Temperature	-40°C to 85°C
Storage Temperature	-55°C to 100°C
RF Power	50mW
IF Current	40mA

Permanent damage may occur if any of these limits are exceeded.

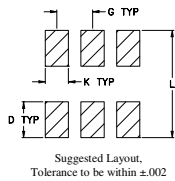
### Pin Connections

LO	6
RF	4
IF	3
GROUND	1,2,5

### Outline Drawing



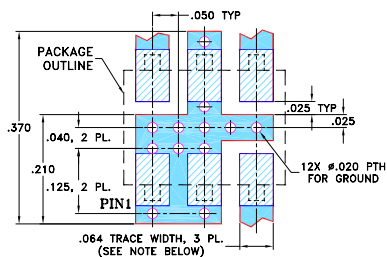
#### PCB Land Pattern



### Outline Dimensions (inch/mm)

A	B	C	D	E	F	G
.272	.310	.220	.100	.082	.055	.100
6.91	7.87	5.59	2.54	2.08	1.40	2.54
H	J	K	L	wt		
.030	.026	.065	.300	grams		
0.76	0.66	1.65	7.62	0.15		

### Demo Board MCL P/N: TB-02 Suggested PCB Layout (PL-051)



- NOTES: 1. TRACE WIDTH IS SHOWN FOR ROGERS RO4350B WITH DIELECTRIC THICKNESS .030" ± .002". COPPER: 1/2 OZ. EACH SIDE. FOR OTHER MATERIALS TRACE WIDTH MAY NEED TO BE MODIFIED.  
2. BOTTOM SIDE OF THE PCB IS CONTINUOUS GROUND PLANE.
- DENOTES PCB COPPER LAYOUT WITH SMOBC (SOLDER MASK OVER BARE COPPER)  
▨ DENOTES COPPER LAND PATTERN FREE OF SOLDER MASK

### Notes

- A. Performance and quality attributes and conditions not expressly stated in this specification document are intended to be excluded and do not form a part of this specification document.  
B. Electrical specifications and performance data contained in this specification document are based on Mini-Circuit's applicable established test performance criteria and measurement instructions.  
C. The parts covered by this specification document are subject to Mini-Circuit's standard limited warranty and terms and conditions (collectively, "Standard Terms"); Purchasers of this part are entitled to the rights and benefits contained therein. For a full statement of the Standard Terms and the exclusive rights and remedies thereunder, please visit Mini-Circuit's website at [www.minicircuits.com/MCLStore/terms.jsp](http://www.minicircuits.com/MCLStore/terms.jsp)

### Features

- low conversion loss, 7.0 dB typ.
- excellent IP3, 17 dBm typ.
- low profile package
- aqueous washable
- protected by U.S. Patent 6,133,525

### Applications

- cellular
- VHF/UHF



Generic photo used for illustration purposes only  
CASE STYLE: CD541

### +RoHS Compliant

The +Suffix identifies RoHS Compliance. See our web site for RoHS Compliance methodologies and qualifications



Available Tape and Reel  
at no extra cost

Reel Size	Devices/Reel
7"	20, 50, 100, 200
13"	500, 1000

### Electrical Specifications

FREQUENCY (MHz)		CONVERSION LOSS (dB)				LO-RF ISOLATION (dB)				LO-IF ISOLATION (dB)				IP3 at center band (dBm)
LO/RF	IF	Mid-Band		Total	L		U		L		U		Typ.	
$f_L$ - $f_U$	DC-1000	$\bar{X}$	$\sigma$	Max.	Typ.	Min.	Typ.	Min.	Typ.	Min.	Typ.	Min.		
50-1000	DC-1000	7.0	0.15	8.0	9.0	40	25	33	22	44	26	37	20	17

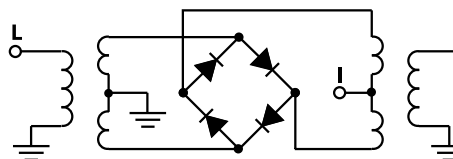
1 dB COMP.: +1 dBm typ.

L = low range [ $f_L$  to 10  $f_L$ ] U = upper range [ $f_U/2$  to  $f_U$ ] m = mid band [ $2f_L$  to  $f_U/2$ ]

### Typical Performance Data

Frequency (MHz)		Conversion Loss (dB)	Isolation L-R (dB)	Isolation L-I (dB)	VSWR RF Port (:1)	VSWR LO Port (:1)
RF	LO	LO +7dBm	LO +7dBm	LO +7dBm	LO +7dBm	LO +7dBm
50.00	80.00	7.27	51.50	46.30	2.68	1.39
70.00	100.00	7.27	49.70	44.50	2.65	1.41
80.00	110.00	7.18	48.90	43.90	2.68	1.42
100.00	130.00	7.18	47.70	42.50	2.68	1.41
117.86	147.86	7.19	46.30	41.80	2.76	1.43
185.71	215.71	7.23	43.40	39.00	2.68	1.41
253.57	283.57	7.08	41.00	37.40	2.55	1.42
321.43	351.43	7.04	39.30	35.50	2.61	1.40
389.29	419.29	6.94	37.90	35.20	2.68	1.39
457.14	487.14	6.85	37.00	34.20	2.61	1.35
500.00	530.00	6.90	36.70	33.60	2.61	1.30
525.00	555.00	6.93	36.50	33.20	2.55	1.27
592.86	622.86	6.96	35.60	33.90	2.65	1.27
660.71	690.71	6.84	35.80	34.80	2.80	1.25
728.57	758.57	6.85	35.30	34.80	2.84	1.21
796.43	826.43	6.87	34.70	37.00	2.80	1.21
800.00	830.00	6.92	34.70	37.00	2.84	1.22
864.29	894.29	6.87	34.70	36.10	3.06	1.17
932.14	962.14	6.85	34.70	28.40	3.26	1.23
1000.00	1030.00	6.91	35.60	25.60	3.44	1.26

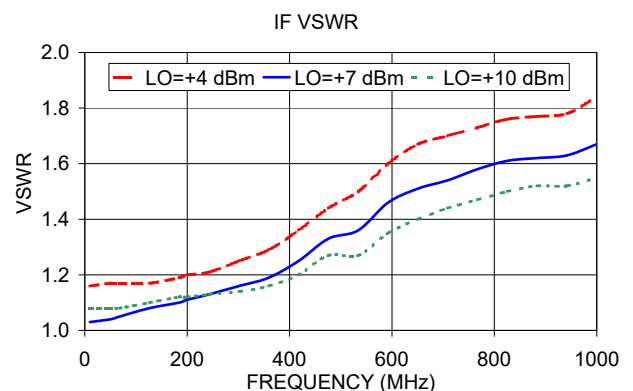
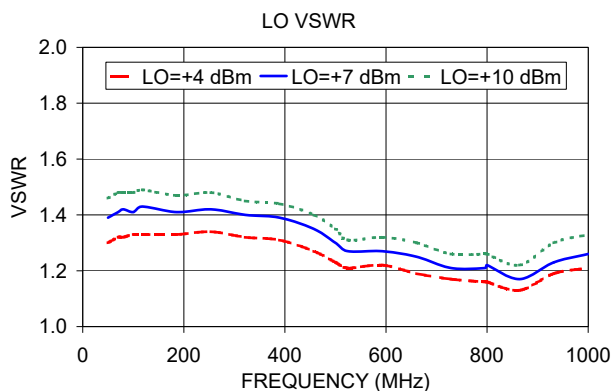
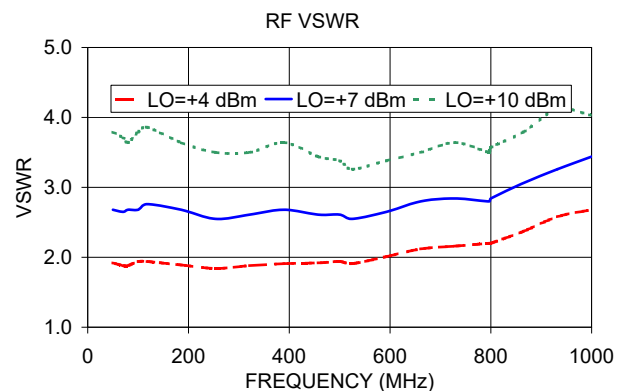
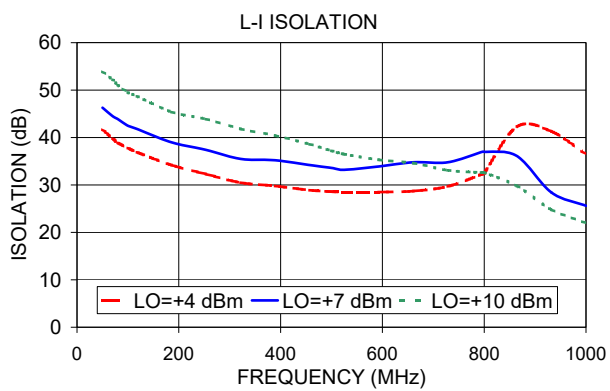
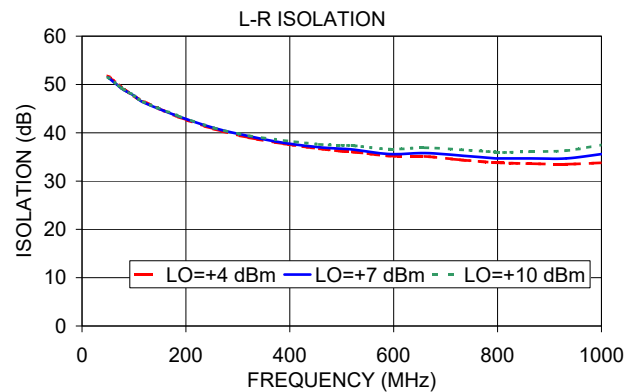
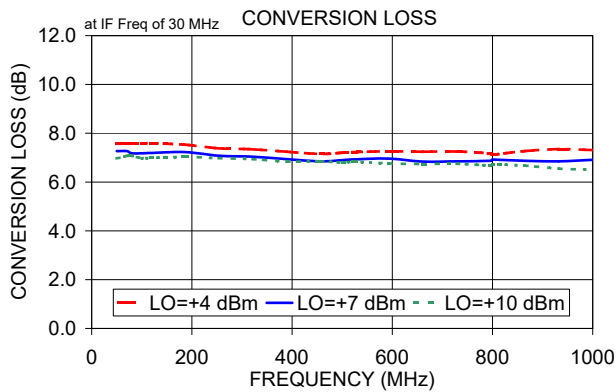
### Electrical Schematic



**Mini-Circuits**

[www.minicircuits.com](http://www.minicircuits.com) P.O. Box 350166, Brooklyn, NY 11235-0003 (718) 934-4500 sales@minicircuits.com

REV. F  
M158496  
ADE-12+  
ED-6103/1  
DJ/TD/CP/AM  
200420  
Page 1 of 2



**Notes**

- A. Performance and quality attributes and conditions not expressly stated in this specification document are intended to be excluded and do not form a part of this specification document.
- B. Electrical specifications and performance data contained in this specification document are based on Mini-Circuit's applicable established test performance criteria and measurement instructions.
- C. The parts covered by this specification document are subject to Mini-Circuits standard limited warranty and terms and conditions (collectively, "Standard Terms"); Purchasers of this part are entitled to the rights and benefits contained therein. For a full statement of the Standard Terms and the exclusive rights and remedies thereunder, please visit Mini-Circuits' website at [www.minicircuits.com/MCLStore/terms.jsp](http://www.minicircuits.com/MCLStore/terms.jsp)



## X-ON Electronics

Largest Supplier of Electrical and Electronic Components

*Click to view similar products for [RF Mixer](#) category:*

*Click to view products by [Mini-Circuits](#) manufacturer:*

Other Similar products are found below :

[HMC337-SX](#) [mamx-009646-23dbm1](#) [MC4507-2](#) [HMC339-SX](#) [CSM5T](#) [CHR3664-QEG](#) [HMC8192-SX](#) [MIQ24MS-2](#) [HMC220BMS8GETR](#)  
[M85C](#) [M74C](#) [MD-174-PIN](#) [HMC554A-SX](#) [HMC521A-SX](#) [HMC521ACHIPS](#) [HMC558A](#) [HMC8191](#) [CMD258](#) [LT5511EFE](#) [MAMX-](#)  
[011023-SMB](#) [HMC399MS8TR](#) [HMC333TR](#) [HMC214MS8TR](#) [HMC175MS8TR](#) [HMC1043LC3TR](#) [MAMXSS0012TR-3000](#) [109728-](#)  
[HMC129LC4](#) [CSM2-13](#) [CSM1-13](#) [HMC785LP4ETR](#) [LT5526EUF#PBF](#) [LT5579IUH#PBF](#) [HMC773ALC3BTR](#) [HMC558ALC3B](#)  
[HMC329ALC3B](#) [MY63H](#) [SMA5101-TL-H](#) [AD8343ARUZ-REEL7](#) [AD608AR](#) [AD608ARZ](#) [AD831APZ-REEL7](#) [AD8342ACPZ-REEL7](#)  
[AD8343ARUZ](#) [AD8344ACPZ-REEL7](#) [ADL5363ACPZ-R7](#) [ADL5365ACPZ-R7](#) [ADL5802ACPZ-R7](#) [HMC1048ALC3B](#) [HMC1056LP4BE](#)  
[HMC1057-SX](#)