

2 Way-0° 50Ω 2 to 26.5 GHz

The Big Deal

- Ultra-Wide Bandwidth, usable over 1.8 to 28 GHz
- Tiny Size, 4 x 4 x 1 mm
- High Power Handling, 2.5 W as a Splitter



CASE STYLE: DG1847

Product Overview

Mini-Circuits EP2K1+ is a MMIC splitter/combiner designed for wideband operation from 2 to 26.5 GHz. This model provides excellent power ratings in a tiny device package (4x4x1 mm), with up to 2.5 W power handling (as a splitter) and up to 1.2A DC current passing. Manufactured using GaAs IPD technology, it provides a high level of ESD protection and excellent reliability.

Key Features

Feature	Advantages
Wideband, 2 to 26.5 GHz	One power splitter can be used in many applications, saving component count. Also ideal for wideband applications such as military and instrumentation.
Excellent power handling 2.5W as a splitter at 25°C 1.7W internal dissipation as a combiner at 25°C	In power combiner applications, half the power is dissipated internally. EP2K1+ is designed to handle 1.7W internal dissipation as a combiner allowing reliable operation without excessive temperature rise. Similar splitters implemented as Wilkinson splitters on PCB require big resistors and additional heat sinking. As a splitter, EP2K1+ can handle up to 2.5W in a very small package.
DC Passing up to 1.2A	DC current passing is helpful in applications where both RF & DC need to pass through the DUT, such as antenna mounted hardware.
Small size 4 x 4mm QFN package	Tiny footprint saves space in dense layouts while providing low inductance, repeatable transitions, and excellent thermal contact to the PCB.

2 Way-0° 50Ω 2 to 26.5 GHz**Features**

- Wide bandwidth, 2 to 26.5 GHz, usable over 1.8 to 28 GHz
- Excellent amplitude unbalance, 0.1 dB typ.
- Good phase unbalance, 1 to 5 deg. typ.
- Small size, 4x4 mm
- High ESD level*
- Aqueous washable
- DC passing

Applications

- WIMAX
- ISM
- Instrumentation
- Radar
- WLAN
- Satellite communications
- LTE



Generic photo used for illustration purposes only
CASE STYLE: DG1847

+RoHS Compliant

The +Suffix identifies RoHS Compliance. See our web site for RoHS Compliance methodologies and qualifications

Electrical Specifications¹ at 25°C

Parameter	Frequency (GHz)	Min.	Typ.	Max.	Unit
Frequency Range		2		26.5	GHz
Insertion Loss ² above 3.0 dB	2 - 5	—	0.8	1.3	dB
	5 - 10	—	1.1	1.6	
	10 - 18	—	1.7	2.5	
	18 - 26.5	—	2.4	3.2	
Isolation	2 - 5	6	14	—	dB
	5 - 10	13	22	—	
	10 - 18	14	20	—	
	18 - 26.5	14	21	—	
Phase Unbalance	2 - 5	—	1.5	4	Degree
	5 - 10	—	2.3	6	
	10 - 18	—	3.7	8	
	18 - 26.5	—	5.4	9	
Amplitude Unbalance	2 - 5	—	0.1	0.3	dB
	5 - 10	—	0.1	0.3	
	10 - 18	—	0.1	0.5	
	18 - 26.5	—	0.3	0.7	
VSWR (Port S)	2 - 5	—	1.5	—	:1
	5 - 10	—	1.4	—	
	10 - 18	—	1.4	—	
	18 - 26.5	—	1.4	—	
VSWR (Port 1-2)	2 - 5	—	1.5	—	:1
	5 - 10	—	1.3	—	
	10 - 18	—	1.4	—	
	18 - 26.5	—	1.5	—	

1. Tested on Mini-Circuits Test Board TB-840+

2. Insertion Loss Values are de-embedded from Test Board Loss; 0.3 dB at 2 GHz, 0.5 dB at 5 GHz, 0.8 dB at 10 GHz and 1.3 dB at 18 GHz & 2 dB at 26.5 GHz

Maximum Ratings

Parameter	Ratings
Operating Temperature	-40°C to 85°C
Storage Temperature	-65°C to 150°C
Power Input (as a splitter)	2.5W max. at 25°C. Derate linearly to 1.25W at 85°C
Internal Dissipation	1.7W max. at 25°C. Derate linearly to 1.1W at 85°C
DC Current	1.2A max. at 25°C. Derate linearly to 0.6A at 85°C

Permanent damage may occur if any of these limits are exceeded.

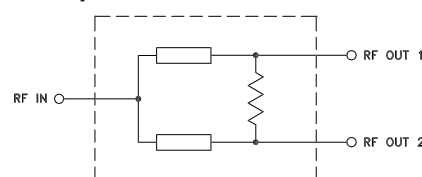
* ESD rating

Human body model (HBM): Class 2(2000 to <4000 V) in accordance with ANSI/ESD 5.1-2001

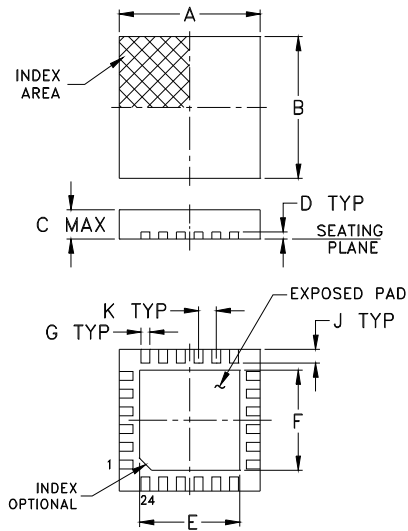
Machine model (MM): Class M3 (200 to <400 V) in accordance with ANSI/ESD 5.2-1999

Pad Connections

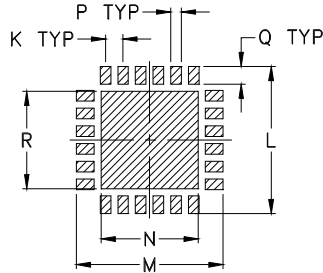
Function	Pad Number
SUM PORT	3
PORT 1	14
PORT 2	17
NOT USED, GROUND EXTERNALLY	1, 2, 4-13, 15-16, 18-24, Paddle

Simplified Electrical Schematic

Outline Drawing



PCB Land Pattern



Suggested Layout,
Tolerance to be within $\pm .002$

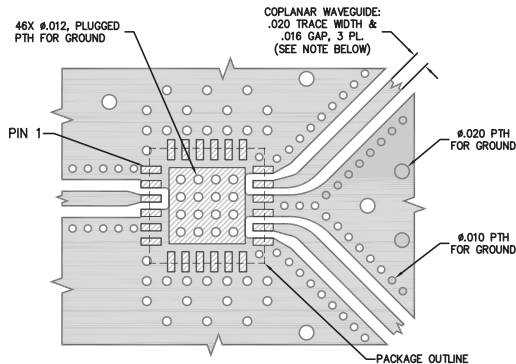
Product Marking



Outline Dimensions (inch/mm)

A	B	C	D	E	F	G	H	J
.157	.157	.039	.008	.104	.104	.009	--	.016
4.0	4.0	1.0	0.20	2.64	2.64	0.23	--	0.41
K	L	M	N	P	Q	R		wt
.020	.166	.166	.102	.012	.020	.102		grams
0.50	4.22	4.22	2.59	0.30	0.51	2.59		0.04

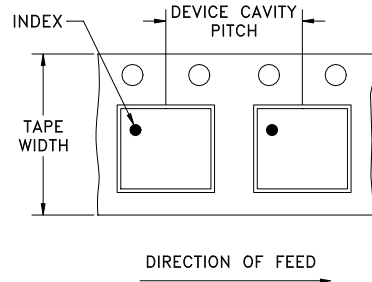
Demo Board MCL P/N: TB-845-1+
Suggested PCB Layout (PL-472)



- NOTES:
- TRACE WIDTH IS SHOWN FOR ROGERS R04350B WITH DIELECTRIC THICKNESS $.010 \pm .001$; COPPER: 1/2 OZ. EACH SIDE. FOR OTHER MATERIALS TRACE WIDTH AND GAP MAY NEED TO BE MODIFIED.
 - BOTTOM SIDE OF THE PCB IS CONTINUOUS GROUND PLANE.
- DENOTES PCB COPPER LAYOUT WITH SMOBC (SOLDER MASK OVER BARE COPPER).
 - DENOTES COPPER LAND PATTERN FREE OF SOLDER MASK.

Tape and Reel (F68)

DEVICE ORIENTATION IN T&R

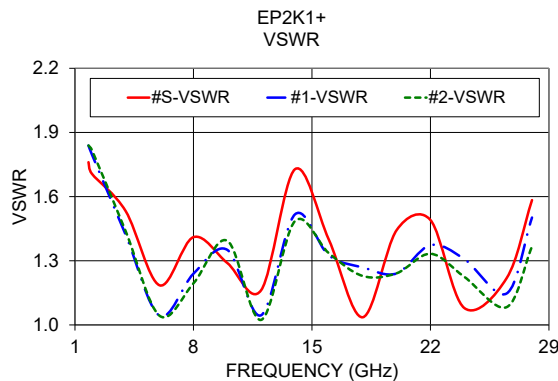
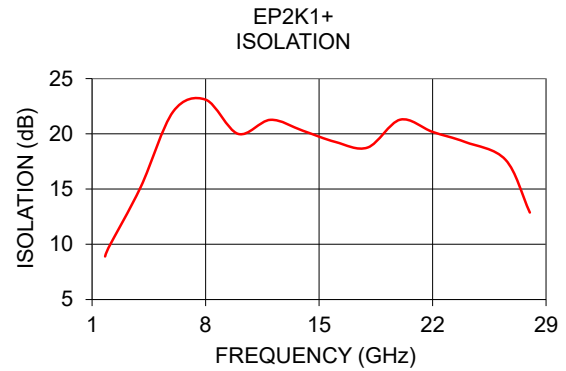
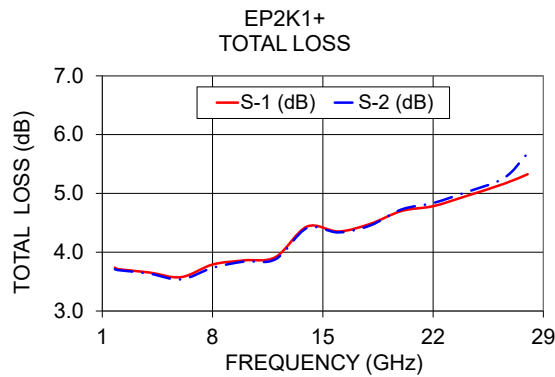


Tape Width, mm	Device Cavity Pitch, mm	Reel Size, inches	Devices per Reel see note
12	8	7	Small quantity standard
			20
			50
		13	Standard
			1000
			2000

Typical Performance Data

Frequency (GHz)	Total Loss ¹ (dB)		Amplitude Unbalance (dB)	Isolation (dB)	Phase Unbalance (deg.)	VSWR S	VSWR 1	VSWR 2
	S-1	S-2						
1.8	3.74	3.71	0.03	8.90	0.20	1.76	1.84	1.84
2.0	3.71	3.70	0.02	9.65	0.24	1.71	1.80	1.82
4.0	3.65	3.64	0.02	15.19	0.85	1.53	1.42	1.44
6.0	3.58	3.54	0.04	22.01	1.41	1.19	1.04	1.04
8.0	3.79	3.74	0.06	23.09	1.82	1.41	1.24	1.19
10.0	3.86	3.84	0.02	20.00	2.26	1.29	1.35	1.39
12.0	3.92	3.88	0.04	21.27	2.49	1.16	1.05	1.02
14.0	4.44	4.41	0.03	20.28	3.16	1.73	1.52	1.49
16.0	4.35	4.34	0.02	19.27	2.87	1.40	1.33	1.34
18.0	4.48	4.45	0.03	18.76	3.02	1.04	1.27	1.23
20.0	4.70	4.73	0.03	21.28	3.79	1.44	1.24	1.24
22.0	4.78	4.84	0.05	20.17	4.09	1.49	1.37	1.33
24.0	4.95	5.01	0.07	19.27	2.99	1.08	1.31	1.22
26.5	5.16	5.26	0.10	17.65	4.44	1.22	1.15	1.08
28.0	5.33	5.68	0.36	12.87	4.80	1.58	1.50	1.37

1. Total Loss = Insertion Loss + 3dB splitter loss.



Additional Notes

- A. Performance and quality attributes and conditions not expressly stated in this specification document are intended to be excluded and do not form a part of this specification document.
- B. Electrical specifications and performance data contained in this specification document are based on Mini-Circuits' applicable established test performance criteria and measurement instructions.
- C. The parts covered by this specification document are subject to Mini-Circuits standard limited warranty and terms and conditions (collectively, "Standard Terms"); Purchasers of this part are entitled to the rights and benefits contained therein. For a full statement of the Standard Terms and the exclusive rights and remedies thereunder, please visit Mini-Circuits' website at www.minicircuits.com/MCLStore/terms.jsp



X-ON Electronics

Largest Supplier of Electrical and Electronic Components

Click to view similar products for [Signal Conditioning](#) category:

Click to view products by [Mini-Circuits](#) manufacturer:

Other Similar products are found below :

[MAPDCC0001](#) [MAPDCC0004](#) [PD0409J5050S2HF](#) [880157](#) [HHS-109-PIN](#) [DC1417J5005AHF](#) [AFS14A30-2185.00-T3](#) [AFS14A35-1591.50-T3](#) [DS-323-PIN](#) [B39321R801H210](#) [1A0220-3](#) [JP510S](#) [LFB212G45SG8C341](#) [LFB322G45SN1A504](#) [LFL182G45TC3B746](#) [SF2159E](#) [30057](#) [FM-104-PIN](#) [CER0813B](#) [MAPDCC0005](#) [3A325](#) [40287](#) [41180](#) [ATB3225-75032NCT](#) [BD0810N50100AHF](#) [BD2425J50200AHF](#) [C5060J5003AHF](#) [JHS-115-PIN](#) [JP503AS](#) [DC0710J5005AHF](#) [DC2327J5005AHF](#) [DC3338J5005AHF](#) [43020](#) [LFB2H2G60BB1C106](#) [LFL15869MTC1B787](#) [X3C19F1-20S](#) [XC3500P-20S](#) [10013-20](#) [SF2194E](#) [CDBLB455KCAX39-B0](#) [TGL2208-SM, EVAL](#) [RF1353C](#) [PD0922J5050D2HF](#) [1E1305-3](#) [1G1304-30](#) [B0922J7575AHF](#) [2020-6622-20](#) [TP-102-PIN](#) [TP-103-PIN](#) [BD1222J50200AHF](#)