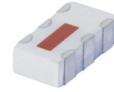


# High Pass Filter

50Ω 7900 to 11000 MHz

HFCN-7150+



Generic photo used for illustration purposes only

CASE STYLE: FV1206-1

+RoHS Compliant

The +Suffix identifies RoHS Compliance. See our web site for RoHS Compliance methodologies and qualifications

Available Tape and Reel at no extra cost

Reel Size	Devices/Reel
7"	20, 50, 100, 200, 500, 1000, 3000

## Maximum Ratings

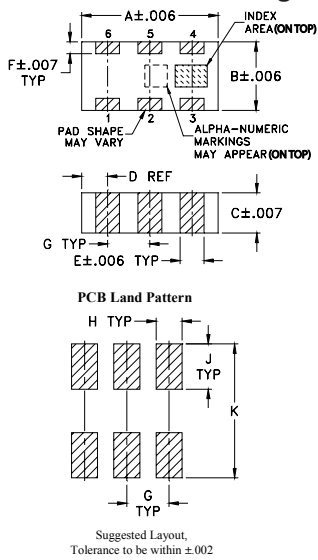
Operating Temperature	-55°C to 100°C
Storage Temperature	-55°C to 100°C
RF Power Input*	6W max. at 25°C

\*Passband rating, derate linearly to 3W at 100°C ambient. Permanent damage may occur if any of these limits are exceeded.

## Pin Connections

RF IN	1
RF OUT	3
GROUND	2,4,5,6

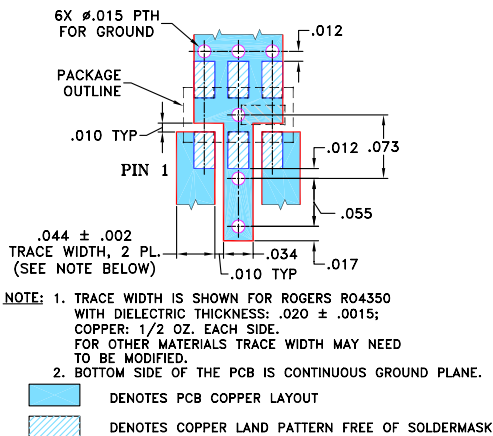
## Outline Drawing



## Outline Dimensions (inch)

A	B	C	D	E	F	G	H	J	K	wt
.126	.063	.035	.024	.022	.011	.039	.024	.042	.123	grams
3.20	1.60	0.89	0.61	0.56	0.28	0.99	0.61	1.07	3.12	.020

## Demo Board MCL P/N: TB-285 Suggested PCB Layout (PL-158)



## Features

- Low cost
- Small size
- 5 sections
- Temperature stable
- Excellent power handling, 6W
- Hermetically sealed
- LTCC construction
- Protected by US Patent 7,760,485

## Applications

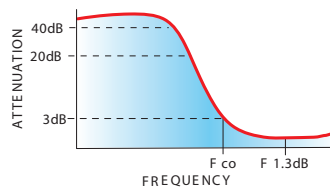
- Sub-harmonic rejection
- Transmitters / receivers

## Electrical Specifications<sup>(1,2)</sup> at 25°C

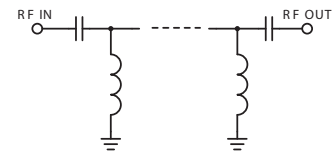
STOPBAND (MHz)	f <sub>co</sub> , MHz Nom.	PASSBAND (MHz)	VSWR Typ.	POWER INPUT (W)	NO. OF SECTIONS
(Loss > 30dB) Typ.	(Loss 3 dB) Typ.	(Loss < 1.5dB) Typ.	Frequency Stopband	Max.	
(Loss > 20dB) Min.	(Loss < 2dB) Max.		1.5:1		
5100	7150	8500-10500 7900-11000	20:1 7250-11000	6	5

- (1) In Application where DC voltage is present at either input or output ports, coupling capacitors are required.  
(2) Measured on Mini-Circuits Characterization Test Board TB-285.

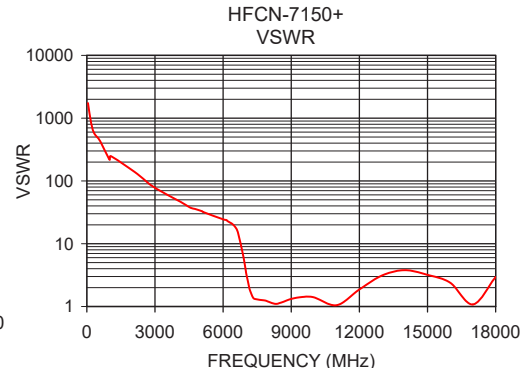
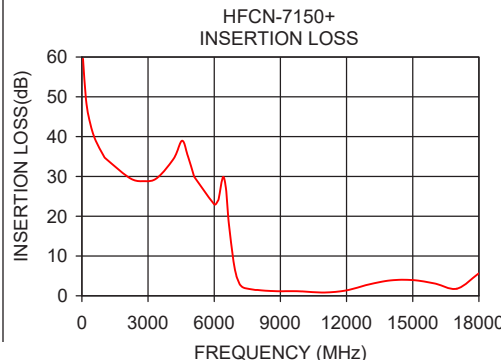
## typical frequency response



## electrical schematic



Frequency (MHz)	Insertion Loss (dB)	VSWR (:1)
50	59.58	1737.18
1000	35.04	217.15
2800	28.81	86.86
4540	38.96	37.77
5100	29.87	32.18
6150	23.72	23.81
6650	18.85	15.26
7020	4.74	3.34
7150	2.97	2.01
7250	2.31	1.56
7900	1.46	1.23
8500	1.24	1.14
10500	0.92	1.29
11000	0.82	1.05
12000	1.37	1.87
15000	3.95	3.19
18000	5.64	2.95



## Notes

- A. Performance and quality attributes and conditions not expressly stated in this specification document are intended to be excluded and do not form a part of this specification document.  
B. Electrical specifications and performance data contained in this specification document are based on Mini-Circuit's applicable established test performance criteria and measurement instructions.  
C. The parts covered by this specification document are subject to Mini-Circuits standard limited warranty and terms and conditions (collectively, "Standard Terms"); Purchasers of this part are entitled to the rights and benefits contained therein. For a full statement of the Standard Terms and the exclusive rights and remedies thereunder, please visit Mini-Circuits' website at [www.minicircuits.com/MCLStore/terms.jsp](http://www.minicircuits.com/MCLStore/terms.jsp)



## X-ON Electronics

Largest Supplier of Electrical and Electronic Components

*Click to view similar products for [Signal Conditioning](#) category:*

*Click to view products by [Mini-Circuits](#) manufacturer:*

Other Similar products are found below :

[MAPDCC0001](#) [MAPDCC0004](#) [PD0409J5050S2HF](#) [880157](#) [HHS-109-PIN](#) [DC1417J5005AHF](#) [AFS14A30-2185.00-T3](#) [AFS14A35-1591.50-T3](#) [DS-323-PIN](#) [B39321R801H210](#) [1A0220-3](#) [JP510S](#) [LFB212G45SG8C341](#) [LFB322G45SN1A504](#) [LFL182G45TC3B746](#) [SF2159E](#) [30057](#)  
[FM-104-PIN](#) [CER0813B](#) [MAPDCC0005](#) [3A325](#) [40287](#) [41180](#) [ATB3225-75032NCT](#) [BD0810N50100AHF](#) [BD2425J50200AHF](#)  
[C5060J5003AHF](#) [JHS-115-PIN](#) [JP503AS](#) [DC0710J5005AHF](#) [DC2327J5005AHF](#) [DC3338J5005AHF](#) [43020](#) [LFB2H2G60BB1C106](#)  
[LFL15869MTC1B787](#) [X3C19F1-20S](#) [XC3500P-20S](#) [10013-20](#) [SF2194E](#) [CDBLB455KCAX39-B0](#) [TGL2208-SM, EVAL](#) [RF1353C](#)  
[PD0922J5050D2HF](#) [1E1305-3](#) [1G1304-30](#) [B0922J7575AHF](#) [2020-6622-20](#) [TP-102-PIN](#) [TP-103-PIN](#) [BD1222J50200AHF](#)