

Coaxial

# Adapter *2.92 mm-F to 2.92 mm-F*

**KFPM-KF50+**

50Ω

DC to 40 GHz

## The Big Deal

- Ultra-wideband, DC-40 GHz
- Flat response
- Low insertion loss, 0.12 dB typ. up to 40 GHz
- Excellent VSWR, 1.08:1 typ. up to 40 GHz



CASE STYLE: DJ2261-2

## Product Overview

Mini-Circuits' KFPM-KF50+ is a coaxial 2.92 mm-F to 2.92 mm-F panel mount adapter supporting a wide range of applications from DC to 40 GHz. This model provides excellent VSWR, low insertion loss, and flat response versus frequency. The KFPM-KF50+ features a panel mount ideal for mounting connectors through panels in contained assemblies using a single hole.

## Key Features

Feature	Advantages
Wideband, DC to 40 GHz	Wide frequency range provides application flexibility and makes this model ideal for broadband and multi-band use.
Excellent VSWR, 1.08:1 typ. up to 40 GHz	Provides good matching for 50Ω systems and minimizes signal reflections across wide frequency range.
Low insertion loss, 0.12 dB typ. up to 40 GHz	Provides excellent signal power transmission from input to output.
Wide operating temperature range, -45 to +100°C	Withstands tough operating conditions and is suitable for use near high power componentry where heat rise is common.

### Notes

- A. Performance and quality attributes and conditions not expressly stated in this specification document are intended to be excluded and do not form a part of this specification document.  
B. Electrical specifications and performance data contained in this specification document are based on Mini-Circuit's applicable established test performance criteria and measurement instructions.  
C. The parts covered by this specification document are subject to Mini-Circuits standard limited warranty and terms and conditions (collectively, "Standard Terms"); Purchasers of this part are entitled to the rights and benefits contained therein. For a full statement of the Standard Terms and the exclusive rights and remedies thereunder, please visit Mini-Circuits' website at [www.minicircuits.com/MCLStore/terms.jsp](http://www.minicircuits.com/MCLStore/terms.jsp)



# Coaxial Adapter *2.92mm-F to 2.92mm-F*

## KFPM-KF50+

50Ω

DC to 40 GHz

### Maximum Ratings

Operating Temperature	-45°C to 100°C
Storage Temperature	-55°C to 100°C

Permanent damage may occur if any of these limits are exceeded.

### Features

- flat response
- excellent VSWR, 1.08:1 typ. up to 40 GHz
- passivated stainless steel body
- panel mount

### Applications

- interconnection of RF cables and equipment
- instrumentation



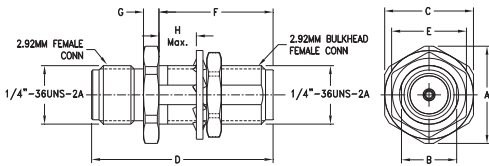
Generic photo used for illustration purposes only

CASE STYLE: DJ2261-2

Connectors	Model
2.92mm-Female	KFPM-KF50+

**+RoHS Compliant**  
The +Suffix identifies RoHS Compliance. See our web site for RoHS Compliance methodologies and qualifications

### Outline Drawing



### Outline Dimensions (inch/mm)

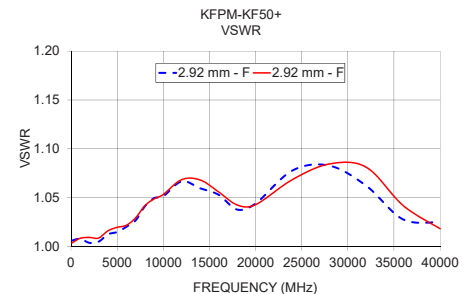
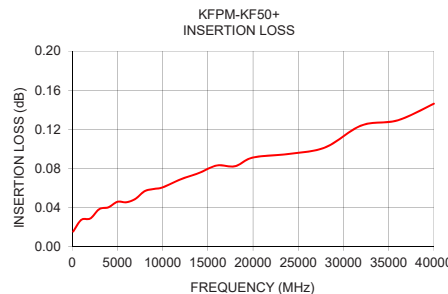
A	B	C	D	E
0.41	0.23	0.37	0.76	0.32
10.41	5.84	9.40	19.30	8.13
F	G	H		wt
0.48	0.06	0.16		grams
12.19	1.52	4.06		4.0

### Electrical Specifications at 25°C

Parameter	Condition (GHz)	Min.	Typ.	Max.	Units
Frequency Range		DC		40	GHz
Insertion Loss	DC - 6	—	0.04	—	
	6 - 10	—	0.06	—	dB
	10 - 20	—	0.08	—	
VSWR	20 - 40	—	0.12	—	
	DC - 6	—	1.01	1.25	
	6 - 10	—	1.04	1.25	:1
	10 - 20	—	1.05	1.25	
	20 - 40	—	1.05	1.25	

### Typical Performance Data

Frequency (MHz)	Insertion Loss (dB)	VSWR (:1)	
		2.92 mm - F	2.92 mm - F
100	0.02	1.01	1.00
1000	0.03	1.01	1.01
2000	0.03	1.00	1.01
3000	0.04	1.01	1.01
4000	0.04	1.01	1.02
5000	0.05	1.02	1.02
6000	0.05	1.02	1.02
7000	0.05	1.03	1.03
8000	0.06	1.04	1.04
9000	0.06	1.05	1.05
10000	0.06	1.05	1.05
12000	0.07	1.07	1.07
14000	0.08	1.06	1.07
16000	0.08	1.05	1.06
18000	0.08	1.04	1.04
20000	0.09	1.04	1.04
24000	0.09	1.08	1.07
28000	0.10	1.08	1.08
32000	0.12	1.06	1.08
36000	0.13	1.03	1.04
40000	0.15	1.03	1.02



### Notes

- Performance and quality attributes and conditions not expressly stated in this specification document are intended to be excluded and do not form a part of this specification document.
- Electrical specifications and performance data contained in this specification document are based on Mini-Circuit's applicable established test performance criteria and measurement instructions.
- The parts covered by this specification document are subject to Mini-Circuits standard limited warranty and terms and conditions (collectively, "Standard Terms"); Purchasers of this part are entitled to the rights and benefits contained therein. For a full statement of the Standard Terms and the exclusive rights and remedies thereunder, please visit Mini-Circuits' website at [www.minicircuits.com/MCLStore/terms.jsp](http://www.minicircuits.com/MCLStore/terms.jsp)



## X-ON Electronics

Largest Supplier of Electrical and Electronic Components

*Click to view similar products for [RF Adapters - In Series](#) category:*

*Click to view products by [Mini-Circuits](#) manufacturer:*

Other Similar products are found below :

[5916-1103-603](#) [5918-1103-000](#) [5919-1503-000](#) [651A505](#) [82-5552](#) [9030-9523-502](#) [A0407000](#) [R114703000W](#) [R125704000](#) [R125771001](#)  
[R141710000W](#) [R141723161](#) [R141730000](#) [R143730700](#) [R143770000](#) [R161703000W](#) [R161730000](#) [R161753000W](#) [R161791500W](#)  
[R161791530W](#) [R201705000](#) [R222705200](#) [R222M40010W](#) [R223703180](#) [R316754000](#) [R405006000](#) [R443162000](#) [AD78TL](#) [HRM-513S](#)  
[1996352-2](#) [2157155-1](#) [252169-75](#) [AD158](#) [2101130-1](#) [252186](#) [R114704000W](#) [R114720000W](#) [R125705001](#) [R125705701](#) [R125771000](#)  
[R125771001W](#) [R125791501W](#) [R127704001](#) [R127.870.001](#) [R127872001](#) [R141717000](#) [R142710000](#) [R142723000](#) [R143703000](#) [R143704000](#)